

QUEBEC

RAND, McNALLY & CO'S

INDEXED POCKET MAP

AND SHIPPERS' GUIDE OF

QUEBEC

Accompanied by a New and Original Compilation and Ready
Reference Index, Showing in Detail the

ENTIRE RAILROAD SYSTEM

The Express Company doing business over each Road, and
Accurately Locating all

**CITIES, TOWNS, POST OFFICES,
RAILROAD STATIONS, VILLAGES, COUNTIES,
ISLANDS, LAKES, RIVERS, ETC.**

THE SPECIAL FEATURES

Of this Pocket Map are; Locating the Nearest Mailing Point of all
Places; Designating Money Order Post Offices; Telegraph
Stations; and Naming the Express Company Doing Busi-
ness at the Points where the Several
Companies have Offices.

Population according to the Latest Official Census

CHICAGO AND NEW YORK:
RAND, McNALLY & CO.,
MAP PUBLISHERS AND ENGRAVERS.

G2827
R15

FOREIGN COUNTRIES

- Afghanistan. See Persia.
 Africa, 21 x 28 inches, with inset map of Suez Canal on large scale.
 Algeria, Tunis, and Morocco, 11 x 14 inches.
 Argentine, Chile, Paraguay, and Uruguay, 21 x 28 inches.
 Asia, 28 x 21 inches.
 Australia, 28 x 21 inches, with inset maps of Sydney and Melbourne.
 Austria-Hungary. 21 x 28 inches.
 Belgium. See Netherlands.
 Brazil and Guiana, 21 x 28 inches.
 *British Columbia, 28 x 21 inches.
 *Central America, 28 x 21 inches.
 Chile. See Argentina.
 China, 28 x 21 inches.
 Columbia and Venezuela, 28 x 21 in.
 Cuba, 21 x 14 inches.
 Denmark, 11 x 14 inches.
 Ecuador, Peru, and Bolivia, 14 x 21 inches.
 Egypt, 14 x 21 inches.
 England and Wales, 21 x 28 inches.
 Europe, 28 x 21 inches.
 France, 21 x 28 inches.
 Germany, 42 x 28 inches.
 Greece and the Ionian Islands, 21 x 14 inches.
 Guiana. See Brazil.
 Hawaii, 14 x 11 inches.
 Holland. See Netherlands.
 India (British), 21 x 28 inches.
 Ireland, 21 x 28 inches.
 Italy, 21 x 28 inches.
 Japan, 21 x 28 inches.
 *Manitoba, 21 x 14 inches.
 *Mexico, 28 x 21 inches.
 Netherlands and Belgium, 14 x 21 in.
 New Zeland, Tasmania and the Fiji Islands, 14 x 21 inches.
 North America, 28 x 21 inches.
 *Nova Scotia, New Brunswick and Prince Edward Island, 21 x 14 in.
 Oceania and Malaysia, 28 x 21 in.
 Ontario, 28 x 21 inches.
 Palestine, 21 x 14 inches.
 Panama, 11 x 14 inches.
 Persia, Afghanistan and Baluchistan, 21 x 28 inches.
 Peru. See Equador.
 Philippine Islands, 21 x 28 inches.
 Porto Rico, 14 x 11 inches.
 Portugal. See Spain.
 *Quebec, 28 x 21 inches.
 Russia (European), 21 x 28 inches.
 Saskatchewan, 28 x 21 inches.
 Scotland, 21 x 28 inches.
 South America, 21 x 28 inches.
 Spain and Portugal, 21 x 28 inches.
 Sweden and Norway, 14 x 21 in.
 Switzerland, 21 x 14 inches.
 Turkey in Asia (Asia Minor), 21 x 14 inches.
 Turkey in Europe, Roumania, Bulgaria, Montenegro and Servia, 21 x 28 inches.
 Union of South Africa, 28 x 21 inches
 Venezuela,. See Columbia.
 West Indies, 21 x 14 inches.
 World on Mercator's Projection, 28 x 21 inches.

* Indicates maps accompanied with Pocket Index. All others have index printed on back of map.

Any map sent postpaid to any post office in the United States or Canada on receipt of 25 cents, currency or postage stamps.

RAND McNALLY & CO.
MAP PUBLISHERS

40-42 E. 22d St., NEW YORK

160 to 174 Adams St., CHICAGO

RAND, McNALLY & CO.'S

INDEXED POCKET MAP

AND SHIPPERS' GUIDE OF

QUEBEC

ACCOMPANIED BY A NEW AND ORIGINAL COMPILATION AND READY
REFERENCE INDEX, SHOWING IN DETAIL THE

ENTIRE RAILROAD SYSTEM

The Express Company doing business over each Road,

AND ACCURATELY LOCATING ALL CITIES, TOWNS, POST OFFICES, RAILROAD STA-
TIONS, VILLAGES, DISTRICTS, ISLANDS, LAKES, RIVERS, ETC.

THE SPECIAL FEATURES

OF THIS POCKET MAP ARE : LOCATING THE NEAREST MAILING POINT OF ALL LOCAL
PLACES ; DESIGNATING MONEY-ORDER POST OFFICES ; TELEGRAPH STA-
TIONS ; AND NAMING THE EXPRESS COMPANY DOING BUSINESS
AT THE POINTS WHERE THE SEVERAL COM-
PANIES HAVE OFFICES.

Population according to the latest Official Census.

CHICAGO AND NEW YORK:
RAND, McNALLY & CO.,
Map Publishers and Engravers.

Explanation of Abbreviations and Reference Marks

N—North. S—South. E—East. W—West. m—Miles. Ry or Rys—Railway or Railways.

† Not a Post Office.

* Money Order Post Office.

† Telegraph Station

△ Adams Express, Common Points.

‡ American Express.

§ Canadian Express.

≡ Canadian Northern Express.

⊖ Dominion Express.

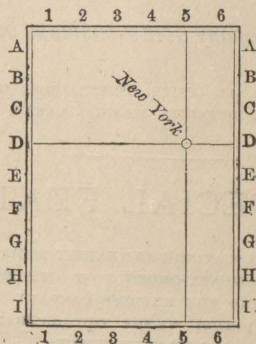
< National Express.

□ United States Exp., Common Points.

● Steamboat Landings.

All counties, towns, cities, villages, etc., are indexed in the following manner:

For example, to find "New York City, D-5," let the diagram below represent the map. New York is seen near the crossing of lines D-D and 5-5.



Copyright, 1911, by Rand, McNally & Co., Chicago.

QUEBEC.

RAILROADS.

- 1 Atlantic, Quebec & Western.
- 12 Boston & Maine. American Exp.
- 14 Canadian Northern of Quebec. Canadian Northern and Dominion Exps.
- 16 Canadian Pacific. Dominion Exp.
- 20 Carillon & Grenville.
- 28 Central Vermont. Canadian Exp.
- 40 Delaware & Hudson. National Exp.
- 65 Grand Trunk Railway System. Canadian and National Exps.
- 67 Intercolonial. Canadian Exp.
- 70 Lotbinière & Megantic.
- 71 Maine Central. American Exp.
- 97 Napierville Junction.
- 106 New York Central & Hudson River. American Exp.
- 110 Philipsburg. American Exp.
- 114 Quebec.
- 118 Quebec Central. American Exp.
- 120 Quebec, Montreal & Southern. Canadian and Dominion Exps.
- 122 Quebec & Lake St. John. Canadian Northern Exp.
- 124 Quebec Oriental.
- 140 Rutland. American Exp.
- 141 Temiscouata. Canadian Exp.

469051

Districts.

	Pop.
Argenteuil, I-8	16,407
Arthabaska, I-13	44,484
Bagot, I-12	18,181
Beauce, I-16	43,439
Beauharnois, J-9	21,732
Bellechasse, G-16	18,706
Berthier, G-9	18,982
Bonaventure, D-5	24,495
Brome, J-13	13,397
Chambly and Verchères, I-11	24,318
Champlain, F-12	35,159
Charlevoix, E-16	19,334
Chateauguay, J-10	15,693
Chicoutimi, C-16, and Saguenay, C-19	48,291
Compton, J-15	26,460
Dorchester, H-16	21,007
Drummond and Arthabaska, I-13	44,484
Gaspe, C-7	30,683
Hochelaga, I-10	56,919
Huntingdon, J-10	13,979
Iberville, J-11	19,536
Jacques Cartier, J-10	26,178
Joliette, G-9	22,255
Kamouraska, F-18	19,099
Labelle, H-6	30,931
Lake St. John, D-11	17,523
Laprairie and Napierville, J-10	14,993
L'Assomption, I-10	14,993
Laval, I-10	19,543
Levis, G-15	26,210
L'Islet, F-17	14,439
Lotbinière, H-14	20,039
Maisonneuve	65,178
Maskinongé, G-10	15,813
Mégantic, H-14	23,621
Missisquoi, J-12	18,489
Montcalm, G-8	13,001
Montmagny, G-17	14,757
Montmorency, F-15	12,311
Montreal, I-11	203,078
Nicolet, H-13	26,590
Pontiac, G-3	25,722
Portneuf, G-13	27,159
Quebec, E-13	90,941
Richelieu, I-11	18,573
Richmond and Wolfe, I-14	34,137
Rimouski, D-21	40,147
Rouville, J-11	15,990
Shefford, J-12	23,628
Sherbrooke, J-13	18,426
Soulages, J-9	9,928
St. Hyacinthe, I-11	21,543
St. Johns and Iberville, J-11	19,536
Stanstead	18,998
Temiscouata, E-20	29,185
Terrebonne, I-9	26,816
Three Rivers and St. Maurice, F 10	26,167
Two Mountains, I-9	14,438
Vaudreuil, J-9	10,465
Wright, G-5	44,800
Yamaska, H-12	16,204
Total Population	1,648,898
Total Area	228,900

Islands.

Allumette	I-3	Heron	D-5
Anticosti	B-13	Jesus	I-10
Aux Grues	F-16	Montreal, includes Hochelaga Dist., and part of Jac- ques Cartier Dist	I-10
Bizard	J-10	Orleans	G-16
Bonaventure	D-9	Verte	D-19
Calumet	I-4		
Coudres	F-17		
Du Pas	H-11		
Grand Victoria	E-2		
Hare	E-18		

Lakes.

A la Croix	D-2	Des Isles	H-9
A la Mauve	F-8	Des Piles	G-12
A la Truite	H-15	Des Pins	G-10
A l'eau Claire	G-11	Des Quinze	G-19
Amabellish	D-14	Des Rapides	F-4
Antiques	F-2	Des Sables	D-18
A Peche	I-4	Des Sables	G-11
Au Bouleau	G-9	Des Sables	H-6
Au Socler	G-11	Dohenaga- mook	E-19
Aux Ecorces	F-5	Drolet	I-16
Aux Islots	K-34	Dumont	H-5
Aux Loups	F-5	Edward	E-13
Aylmer	I-15	Eshwahan	E-6
Bark	G-7	Etchemin	H-17
Barriere	E-4	First	E-20
Belle River	D-14	Flamand	E-11
Birch	H-20	Fourth	E-20
Bouchard	F-11	Gaotanaga	E-2
Bouchette	E-4	Germain	H-10
Bouchette	D-13	Glazier	F-19
Bouthelier	J-20	Grand	E-15
Brome	J-13	Grand	F-2
Brompton	J-13	Grand	G-10
Brule	G-8	Grand	H-5
Caousagaouta	F-10	Grande des Isles	F-13
Cape Mech- egama	E-6	Grassy	H-21
Caribou	G-12	Great Ha Ha	D-16
Castor Blanc	G-6	Green	H-4
Chamberlin	G-10	Gregoire	G-9
Chaud	H-8	Gros	I-8
Chaudiere	I-5	Hamel	C-6
Chicots	G-12	Hickey's	I-5
Clair	C-16	Ignace	G-10
Clair	F-13	Jackson	D-20
Clair	G-13	Kakaskanus	B-18
Clapham	H-14	Kakebonga	F-5
Clear	F-10	kanekequan- eka	E-4
Cornu	H-9	Kepawee	J-19
Coulogne	I-4	Kempt	F-9
Crepeau	H-10	Kenogami	D-15
Croche	F-13	Kiamika	G-8
Croche	H-10	La Culate	F-8
Cypress	G-9	La Famine	H-17
De la Frontier	G-17	Leverrier	G-18
De la Peche	G-12	Little Chaud	G-8
De l'Est	F-18	Little des Isles	F-13
Des Baies	D-20	Little Ha Ha	D-16
Des Bois	I-20	Little Magog	J-13
Des Francs	I-20	Little Nomin- ingue	H-8
Des Cornes	G-7	Little White Fish	H-6
Desert	G-5		
Des Isles	C-16		
Des Isles	E-14		
Des Isles	H-6		

Lakes—continued.

Long.....	F-11	Portneuf.....	B-17
Long.....	F-20	Price.....	J-20
Long.....	G-9	Pytongo.....	H-5
Long.....	G-12	Quiatchouan.....	D-13
Long.....	H-6	Red.....	H-5
Lower Beau-		Rognon.....	E-14
chene.....	I-20	Romamo.....	B-17
Macaza.....	H-8	Rond.....	I-8
Magill.....	L-15	Rouge.....	G-8
Mars.....	L-31	Sacomoni.....	H-11
Mashamengos	F-7	Sapin.....	G-9
Maskinonge.....	H-8	Sargent.....	G-14
Maskinonge.....	H-10	Second.....	E-13
Mason.....	H-9	Second.....	E-20
Matapedia.....	C-2	Seven League.....	H-18
Matawon.....	G-8	Simon.....	I-7
McGregor.....	I-6	Snow.....	F-15
Mégantic.....	I-16	Squaw.....	H-4
Mekinak.....	F-12	St. Charles.....	G-15
Memewin.....	J-20	St. Francis.....	E-19
Memphrema-		St. Francis.....	I-15
gog.....	J-13	St. Francis.....	J-9
Mistigougeche	D-21	St. John.....	C-13
Moncouche.....	C-17	St. John.....	D-16
Mondonack.....	F-10	St. Joseph.....	G-14
Mont Auburn.....	G-13	St. Louis.....	J-10
Monwan.....	F-9	St. Servais.....	G-10
Morin.....	H-9	Sucker.....	G-2
Mujizowaja.....	G-20	Superior.....	D-2
Murray's.....	H-6	Temisca-	
Najaoulank.....	E-13	ming.....	H-18
Natuakimino.....	B-18	The Isles.....	F-4
Nemicashipque	F-9	Third.....	E-13
Nimewaja.....	G-21	Third.....	E-20
Noel.....	F-15	Tomassino.....	G-5
Nominingue.....	H-7	Torture.....	G-12
Obompsaur.....	G-10	Travers.....	F-5
Oconabi.....	E-2	Trembling Moun-	
Ogasigaha.....	H-20	tain.....	H-8
Onichiwaz.....	C-16	Trout.....	D-20
Opequianne.....	E-3	Truite.....	G-13
Ostabainingue	H-20	Tshitagama.....	C-15
Otis.....	D-16	Upikauba.....	E-14
Ottawa.....	H-8	Upper Beau-	
Otter.....	I-6	chene.....	I-20
Ourean.....	H-9	Wabaskout	
Pabelognany.....	F-11	Junk.....	F-9
Pamousca-		Wakaume-	
chiou.....	B-16	kouke.....	F-11
Papineau.....	I-8	Waposanane.....	E-3
Pipmouakau.....	A-17	Washeka.....	F-4
Piscatosin.....	G-7	Whitefish.....	I-6
Pistatongue.....	G-6	Windfall.....	F-5
Pitugneman.....	F-6	Wolf.....	H-21
Poignan.....	F-5	Wyagamack.....	F-12
Porc Epic.....	I-20		

Rivers—continued.

Chamouch-		Mistasstba.....	C-13
ouan.....	C-12	Mistouche.....	D-2
Chaudiere.....	H-16	Moine.....	G-2
Chicoutimi.....	E-15	Montmorency.....	F-15
Coulonge.....	G-3	Montreal.....	H-19
Croche.....	E-12	Murray Bay.....	E-17
Dadquami.....	H-17	Mushrol.....	A-12
Dartmouth.....	B-8	Natawasee.....	G-6
Deep.....	H-3	Neigette.....	D-21
Du Loup.....	E-18	North Nation.....	H-7
Du Loup.....	G-11	Observation.....	A-12
Du Petit		Ottawa.....	E-5
Rocher.....	E-10	Ottawa.....	I-7
Echelle.....	E-16	Ouelle.....	F-18
Escoumins.....	C-18	Papinachois.....	B-20
Flamand.....	E-11	Patapedia.....	D-2
Garden.....	I-20	Peribonka.....	C-14
Gatneau.....	G-6	Peshtone.....	A-21
Grand.....	C-8	Petite Pieriche	E-12
Grande du		Petit Rouge.....	I-8
Chene.....	G-14	Pickanock.....	I-5
Grand Pabos.....	C-7	Pieriche.....	E-11
Green.....	E-19	Piscotasin.....	G-6
Ha Ha.....	D-16	Pohenaganook	E-19
Ignace.....	G-4	Portneuf.....	C-19
Jacques		Rat.....	F-11
Cartier.....	F-15	Restigouche.....	D-2
Jean de Ferr.....	G-5	Richelieu.....	J-11
Jupiter.....	A-10	Rimouski.....	D-20
Kapitashewina	E-4	Rouge.....	I-7
Kazuzabazna.....	I-5	Sagnenay.....	D-15
Keepawa.....	I-20	Salmon.....	I-8
Kiamiki.....	H-7	Sasoyinaga.....	H-20
Kinorge.....	I-8	Sault au	
Lac Oreal.....	H-10	Cochon.....	B-18
L'Assomption.....	H-10	Sault au	
Laval.....	C-19	Monton.....	C-18
Lievre.....	I-6	Sheldrake.....	A-22
Little Casca-		Shesheim-	
pediac.....	C-6	quanne.....	E-13
Little Clair.....	G-10	Shipsha.....	A-15
Little Flamand	E-10	Shipshat.....	C-15
Little Pabos.....	C-8	South West.....	D-20
Little Peri-		St. Ange.....	F-16
bonka.....	C-14	Ste. Ann.....	G-13
Madawaska.....	F-21	Ste. Anne.....	B-5
Madeline.....	B-6	St. Francis.....	F-19
Maganasipi.....	J-20	St. Francis.....	I-15
Malbai.....	C-8	St. Jean.....	D-17
Manicouagan.....	B-21	St. John.....	C-8
Manouan.....	A-15	St. Lawrence.....	I-11
Marguerite.....	D-17	St. Maurice.....	F-12
Maskinonge.....	H-11	Tomassino.....	G-5
Matane.....	C-2	Trenche.....	E-12
Matapedia.....	D-3	Trois Pistoles.....	D-19
Matawin.....	G-11	Upikauba.....	D-14
Metabet-		Valin.....	C-16
chouan.....	D-14	Vermillion.....	E-11
Metis.....	D-21	Wendigo.....	E-11
Middle.....	G-9	Yamaska.....	I-12
Mistassimi.....	C-13	York.....	C-7

Rivers.

A l'Aigle.....	H-5	Betsiamites.....	B-19
A la Ours.....	J-21	Black.....	H-3
Alnais.....	G-30	Black.....	H-10
Ambinanika.....	H-20	Blackstone.....	J-19
Antoine.....	J-19	Blanche.....	I-7
Aux Outardes	B-20	Blanche.....	C-2
Auz Rosiers.....	D-39	Blanche.....	G-18
Batiscan.....	G-13	Bonaventure.....	D-6
Batticres.....	E-10	Bostonnais.....	E-12
Belle.....	D-14	Cascapedia.....	C-5

Towns, Districts, etc.

	Pop.
Abbott's Corners, J-12.....	115
Abbotsford, J-12, (Ry 16) * + †.....	275
Abenakis, G-16.....	110
Abenakis Springs, H-12.....	60

Towns, etc.—continued.	Pop.
Abercorn, J-12, (Ry 16) * † ⊙	220
Aberdeen, H-2 ¶	286
Acton, (Ry 16) ¶ Δ § ⊙ □ see Acton Vale, I-12.	
Acton Vale, I-12, (Ry 65) * †	1175
Adamsville, J-12, (Ry 16) † ⊙	250
Adderley, H-14	20
Adirondack Junction, J-10, (Rys 16, 106) ¶ † Δ ‡ ⊙ □	
Adstock, H-15 *	119
Agnes, I-16 * †	288
Aguanish, Saguenay †	
Ahuntsic, Laval	366
Aird, J-11	48
Alain, Bonaventure.	
Alainbourg, Arthabaska.	
Alaindale, Lotbinière.	
Albanel, Chicoutimi *	44
Albert Mines, Sherbrooke.	
Aldfield, Pontiac ¶	817
Allan's Corners, 4 m N E Ormstown, J-9	80
Allard, Bonaventure.	
Allard Settlement, D-4 ¶	
Allen's Mills, G-14, (Ry 122) † ≅	30
Allumette Island, I-3	1761
Almaville, Champlain	152
Aluminum, (Ry 16) ¶ ½ m S Shaw-negan Falls, G-12.	
Alva, Brome.	
Amherst, Laval ¶ †	336
Amqui, C-2, (Ry 67) * † §	2632
Ancienne Lorette, G-15	650
Anderson's Corners, J-9	90
Andrews, (Ry 122) ¶ 2½ m N W Riviere à Pierre Junction.	
Ange Gardien, G-15 †	1179
Ange Gardien de Rouville, J-12 * †	1433
Angeline, J-12, (Ry 28) §	55
Angers, I-7, (Ry 16) * † ⊙	320
Angus, (Ry 16) ¶ † 1 m W Hochelaga, J-10.	
Angus Mill, Compton, (Ry 118) ¶	800
Anjou, Berthier.	
Annville, H-13 ¶	
Annesley, Pontiac	88
Annonciation, H-8, (Ry 16) ¶ ⊙	
Apple Grove, Stanstead	28
Archambault, (Ry 16) ¶ ¼ m S W St. Lin, I-10.	
Argalls, (Ry 16) ¶ 2¼ m S W Cham-plain, H-13.	
Argenteuil, J-11 ¶	
Argenteuy, Chicoutimi.	
Armagh, G-16 *	122
Armand, E-19.	
Armstrong, Beauce	40
Arthabaska, H-14 *	995
Arthurville, G-16	60
Arundel, I-8, (Ry 14) * ⊙	1369
Asbestos, I-14, (Ry 65) *	785
Ascot Corner, J-14, (Ry 118) † ‡	3703
Ashuapmouchouan, Chicoutimi.	
Assametquaghan, D-3, (Ry 67) †	22
Aston Junction, H-13, (Rys 65, 67) † §	100
Aston Station, H-13, (Ry 65) † §	160
Atalante, Quebec.	
Athelstan, J-9, (Ry 106) † ‡	243
Atlantic Junction, (Ry 16) ¶ 1 m E Western Junction, J-10.	

Towns, etc.—continued.	Pop.
Anberivière, Levis.	
Aubert Gallion, H-16 ¶	20
Aubrey, J-10, (Ry 65) † §	200
Auckland, J-15, (Ry 71) ¶	820
Audet, I-16	47
Aurigny, Gaspé *	
Auvergne, Portneuf	62
Avignon, D-3 *	350
Avoca, I-8	64
Avon, Mégantic.	
Ayer's Cliff, J-13, (Ry 12) * † ‡	150
Aylmer, (East) J-6, (Ry 16) * † ⊙	2300
Aylwin, I-5, (Ry 16) *	805
Bagot, (Ry 67) ¶ § see Ste. Hélène de Bagot, I-12	1264
Bagotville, D-16 * †	500
Baie d'Argenteuil, Argenteuil.	
Baie de la Trinité, B-2	30
Baie des Bacons, Saguenay †	
Baie des Pères, H-18 ¶ (Villemarie).	
Baie des Rochers † 15 m N Port au Persil, E-18	80
Baie d'Urfé, Jacques Cartier, (Rys 16, 65) (Summer P. O.)	30
Baie du Febvre, see La Baie, H-12 ¶	1902
Baie Ste. Claire, Anticosti * 75 m N Gaspé Basin, C 8.	
Baie St. Paul, F-16 * † •	3750
Baillargeon, G-15 *	170
Baldwin's Mills, J-14	150
Ball, (Ry 16) ¶ ½ m N E Papineau-ville, I-8	
Ball Wharf, H-12, (Ry 67) ¶	25
Bancroft, (Ry 16) ¶ 1 m N Knowlton, J-13.	
Barachois de Malbaie, C-8 *	330
Barbue de St. Cesaire, Rouville.	
Barnston, J-14 *	200
Barriere des Caps, Montmerency.	
Barrington, J-11, (Ry 65) † Δ § < □	100
Barry River, Pontiac.	
Barville, Arthabaska.	
Bas de la Baie, Charlevoix.	
Bas de l'Anse, E-17	30
Bas de Ste. Rose, Laval.	
Bas du Sault, Laval.	
Baskatong, Wright.	
Bassin, Chicoutimi.	
Bassin du Lièvre, I-7 †	305
Batesville, (Ry 14) ¶ 4 m S E Arun-del, I-8.	
Batiscan, H-13, (Ry 16) * † ≅ ⊙	1173
Batiscan, (Ry 14) ¶ • 2 m S W Rous-seau's Mills, G-13.	
Batiscan Station, Champlain †	
Bayard, Labelle.	
Bayonne, Joliette.	
Bay View ¶	100
Beaconsfield, J-10, (Rys 16, 65) † Δ § ⊙ □	50
Béarn, Pontiac.	
Beauce Junction, H-16 * † ‡	75
Beauceville Est, H-16, (Ry 118) * † ‡	
Beauceville, Ouest, H-16 * †	
Beauchene, J-19, (Ry 16) *	

<i>Towns, etc.—continued.</i>	Pop.
Beaudet, F-13, (Ry 122) ¶ ≅	235
Beaudoin, Mégantic.	36
Beaudoin Centre, Richmond.	
Beauharnois, J-10, (Rys 65, 106) * † ‡	1976
Beaulac, H-10.	326
Beaulieu, G-15	220
Beaumont, G-16.	170
Beaupoit, G-15, (Ry 114) * †	4595
Beaupoit Church (Ry 114) ¶ near Beaupoit, G-15.	
Beaupoit Est, Quebec. (Ry 114).	
Beaupré, F-16, (Ry 114) * †.	145
Beaupré's Mill. (Ry 14) ¶ ≅ 1 m S W Rivière a Pierre Junction, F-13.	
Beaurepaire, (Rys 16, 65) 2 m S W Beaconsfield, J-10. (Summer P. O.)	50
Beau Rivage, D-3, (Ry 67) ¶	
Beaurivage, Laval ¶	873
Beaurivage, H-15 *	190
Beauséjour, Rimonski *	
Beausoleil, Berthier.	
Beauvoir, J-9.	70
Beaver, Huntingdon.	
Bécancour, H-13, (Ry 120) * §	1992
Beckwiths, J-14. (Ry 71) ¶	30
Becquets, (Ry 120) ¶ § 5 m S Fortierville, H-13.	
Bedard, Labelle, (Ry 16).	
Bedford, J-12, (Ry 16) * † ‡	3641
Beebe, J-13, (Ry 12) * †	477
Beebe Junction, (Ry 12) * † ‡ 1 m S Smiths Mills, J-13.	
Beech Grove, Pontiac.	50
Beech Ridge, I-9.	20
Beith, Huntingdon.	
Béclair, G-15, (Ry 16) † ‡	25
Béland, Beauce.	
Belangers Siding, (Ry 122) ¶ 2 m W Lake St. Joseph, G-14.	
Belgo, (Ry 16) ¶	
Belisle's Mills, H-9 (Ry 16) † ‡	65
Belle Anse, C-8.	50
Bellerive, Beauharnois *	100
Bellerive, (Ry 16) ¶ 2 m E Nominingue, H-7.	
Belle Rivière, I-9	217
Belle Vallée, St. Johns and Iberville	75
Bellevue, (Ry 106) ¶ 4 m S W Château-guay, J-9.	
Bellevue Junction, I-11, (Ry 120) ¶	
Bell Mount, Pontiac.	30
Bells, Ry 16) ¶	
Belmina, I-15	25
Belcote Station, I-11, (Ry 65) * † §	106
Belcote Village, I-11 *	500
Bennett, H-15	25
Beranger, J-12.	20
Bergerville, * 3 m S W Quebec, G-15.	170
Bernadette, Levis.	
Bernier, Mégantic	721
Bersimis, C-20 †.	800
Berthelot, Montmorency.	
Berthier, (en bas) G-16 *	
Berthier, (en haut) H 11, (Ry 16) * † ‡	1364
Berthier Junction, H-11, (Ry 16) † ‡	80
Bertram, (Ry 16) ¶	
Berube, Montmerency.	
Bethany, Shefford.	
Bethel, I-13.	46

<i>Towns, etc.—continued.</i>	Pop.
Bic, D-20, (Ry 67) * † §	1750
Bienville, G-15 * †	851
Biggar, (Ry 16) ¶ 3 m S W Quebec, G-15.	
Bilodeau, (Ry 122) ¶ ≅ 1 m N Dablon, D-13.	
Birchton, J-14, (Ry 16) * † ‡	56
Bishop's Crossing, I-14, (Ry 118) * † ‡	120
Bissetts, (Ry 16) ¶	
Bisson, H-16 ¶	60
Bissonnette, (Ry 14) ≅ 7 m N E Côté Joseph, I-10.	
Blackburn Mine, Wright.	
Black Cape, D-6, (Ry 124) *	225
Black Lake, H-15, (Ry 118) * † ‡	327
Black River (Ry 65) ¶ see Rivière Noire, H-14.	15
Black River Depot, Pontiac.	
Black River Summit, (Ry 122) ¶ 3 m N Perthuis, G-13.	
Blais, Beauce.	
Blaisville, Temisconata *	
Blanche, I-7.	20
Blanchet, G-15.	15
Blandford, H-13	50
Bleriot, Beauce.	
Blouin, Levis.	
Blue Sea Lake, Wright, H-5, (Ry 16).	
Boillard, Mégantic.	
Boileau, I-8.	25
Bois Blanc, (Ry 14) ≅ 3 m N E St. Barthelemi, H-11.	
Boisbriand, Châteauguay.	
Bois de Filion, I-10	30
Bois des Huron, Lotbinière.	
Bois Franc, I-20	25
Boissonneault, Mégantic.	34
Boivin, Beauce.	
Bolduc, I-16 *	78
Bolduc Siding, Compton, (Ry 16).	
Bolton Centre, J-13, (Ry 16) * ‡	78
Bolton Forest, J-13.	24
Bolton Glen, 3 m E Knowlton, J-13.	50
Bonaventure, East, Bonaventure †	75
Bonaventure Island, C-9	20
Bonaventure, D-6, (Ry 124) * §	250
Bon Conseil, Drummond.	81
Bon Désir, D-18 †	23
Bondville, Brome.	
Bonne Espérance, Saguenay †	31
Bonsecours, Shefford ¶	100
Booth, Pontiac.	10
Bord à Plouffe, I-10	571
Bord à Plouffe Ouest, Laval.	
Bord de l'Eau, Portneuf.	
Bordeaux, J-11, (Ry 16) † ‡	491
Boscobel, J-13	90
Botreaux, J-10.	100
Boucherville, I-11, (Ry 120) * † §	940
Bouchette, H-6 *	175
Boudreau Corners, Compton.	
Bougainville, Gaspé.	
Boulevard St. Paul, Jacques Cartier.	
Boulogne, I-12	58
Boundary, I-16, (Ry 16) ¶	
Bourbon, Arthabaska.	
Bourg Louis G-14.	50
Bourg Louis Station, G-14, (Ry 122) ¶ ≅	756
Bourlamaque, Sherbrooke, (Summer P. O.)	

<i>Towns, etc.—continued.</i>	Pop.	<i>Towns, etc.—continued.</i>	Pop.
Carillon & Greenville Crossing, (Ry 14) ¶ 1 m E Greenville, I-8.		Chateaubert * see Poire, G-13.	
Carleton, D-5, (Ry 124) * † §	300	Chatham, (Ry 16) ¶	
Carleton Centre, Bonaventure *		Chatillon, H-13.	80
Carleton West, Bonaventure ¶	50	Chaudière Basin, Levis †	20
Carlin Corners, Argenteuil.		Chaudière Curve, G-15, (Rys 65, 67) * † §	36
Carmel, I-13, (Ry 67) † §	121	Chaudière Junction, G-15, (Rys 65, 67) ¶ †	25
Caroline, J-11, (Ry 120) ¶		Chaudière Station, G-15, (Rys 65, 67) †	1757
Caron, Chicoutimi.		Chaumont, G-15.	25
Carrier, Levis.		Chelsea, I-6, (Ry 16) *	193
Carroll, Pontiac.	75	Chem. Chapleau, Labelle ¶	
Carr's, (Ry 65) ¶ § 2 m N E Whites, J-9.	100	Chemin Gouin, Labelle.	
Cartier, J-9.	50	Chemin Taché, E-19 *.	25
Cartierville, I-10 †	509	Chénéville, I-7 * †	341
Casault, G-16.	25	Chenier, Drummond and Arthabaska ¶	184
Cascades, I-6, (Ry 16) * †	31	Chenier, Wright.	
Cascades Point, Soulanges.	168	Cherry River, J-13 *.	132
Cascapedia, D-6, (Ry 124) ¶ §	150	Chester Nord, I-14.	100
Casgrains, (Ry 16) ¶ 4 m S Roxton Falls, I-12.		Chester Ouest, Drummond and Arthabaska ¶.	150
Cassville, J-13.	30	Chevrefils, Richmond.	
Castlebar, I-14.	30	Chichester, I-3.	83
Castor, C-19 ¶	40	Chicoines, (Ry 16) ¶ 5 m S Wickham West, I-13.	
Caughnawaga, J-10.	2115	Chicot, Berthier.	185
Causapsal, D-6, (Ry 67) * † §	300	Chicot, (Ry 16) ¶ 4½ m S Ste. Thérèse Jc., I-10.	
Cavignac, I-12, (Ry 16)	59	Chicoutimi, D-15, (Ry 122) * † ≅ ●	5796
Cawood, Pontiac.	25	Chicoutimi Ouest, Chicoutimi *	
Caxton, Three Rivers and St. Maurice.		Chilton, H-9 ¶	25
Cazaville, J-9.	110	Chlorydormes, B-7 †	15
Cécile Junction, (Rys 65, 106) ¶ † 3 m S E Valleyfield, J-9.		Choquette, Montmagny.	
Cedar Hall, C-2, (Ry 67) * † §	1204	Christieville, Argenteuil, (Ry 14).	
Cedar Park, (Ry 16) ¶ 1 m N E Pointe Claire, J-10.		Chute Leon, Labelle.	
Cedars, J-9, (Ry 65) *	25	Chute Panet, Portneuf.	
Cedars Station, Soulanges.		Chute Shipshaw, Chicoutimi and Saguenay.	
Chaboillez Square, St. Anne *		Chutes Peribonca, Saguenay.	
Chacoura, Maskinongé.		Chute Ste. Ursule, Maskinongé.	
Chambly, Chambly & Verchères * ..	929	Clairvaux, F-16 ¶	
Chambly Basin, J-11, (Ry 28) ¶ † §.	849	Clairvaux de Bagot, Bagot	112
Chambly Canton, J-11, (Ry 28) * † §.	957	Clairvaux de Charlevoix, Charlevoix	25
Chambord, D-13 *	270	Clapham, H-15	25
Chambord Junction, D-13, (Ry 122) † ≅	50	Clapperton, Bonaventure.	
Champigny, Quebec.	30	Clarenceville, J-11, (Ry 120) * † ⊕	243
Champlain, H-13 *	1529	Clarke City, Saguenay * †	
Champlain Station, H-13, (Ry 16) ¶ † ⊕	30	Clarks Brook, (Ry 67) ¶ 3 m S E Millstream, D-3.	
Chandonnet, Mégantic.		Clearys, (Ry 16) ¶ 1 m S Savage Mills, J-13.	
Channay, J-16 ¶	25	Clement, Wright.	
Channell, Brome.	50	Club Shawinigan, Three Rivers and St. Maurice, (Summer P. O.)	
Chantelle, H-10.	115	Clifton, J-14, (Ry 71) ¶	112
Chapeau, I-4 * †	230	Clyde's Corners, Huntingdon	30
Chapel Corner, Missisquoi ¶	129	Cloutier, (Ry 16) ¶	
Chapleau Station, Argenteuil.		Cloutiers, E-20, (Ry 141) ¶	20
Charette, H-11, (Ry 14) † ≅		Coaticook, J-14, (Ry 65) * † §	2882
Charlemagne, I-11, (Ry 14) * † ≅	627	Coderres, (Ry 16) ¶ 4 m S Actonvale, I-12.	
Charlesbourg, G-15, (Ry 122) * † ≅	2512	Coffey's Corners, Huntingdon	31
Charlesbourg West, G-16, (Ry 122) ≅		Coin Rond, Chambly and Verchères.	
Charny, Levis.		Colbert, G-14.	
Charrington, J-14	100	Coleraine Station, I-15, (Ry 118) † ‡	222
Charteris, I-5.	10	Collfield, Pontiac	31
Chartierville, I-15 *	100	Comin's Mills, Compton	46
Chatboro, Argenteuil.	190	Commissioners Lake, D-13, (Ry 122)	
Chateaugay, J-9, (Ry 106) ‡	102	¶ ≅	
Châteauguay Basin * † 2 m from Châteauguay, J-9	70		
Chateau Richer, G-16, (Ry 114) * † ●	1595		
Chateau Richer Village, (Ry 114) ¶ 3 m N Chateau Richer, G-16.	50		

<i>Towns, etc.—continued.</i>	Pop.	<i>Towns, etc.—continued.</i>	Pop.
Como, J-9, (Ry 16) * ☉	628	Crest, (Ry 16) ¶ 6 m S Beauchene, J-19.	
Compton, J-14 *	457	Crete de Coq, ¶ 2 m N E St. Justin, H-11.	
Compton Station, (Ry 65) † § 1 m W Compton, J-14	25	Crossbury, Compton	25
Conception, (Ry 16) ¶	100	Crosspoint, D-4, (Ry 124)	57
Conde, Chicoutimi.		Crowell, (Ry 16) ¶	
Coney Island, (Ry 65) ¶ 2 m N Titus Station, J-14.		Crystal Falls, H-8.	
Contreccœur, I-11, (Ry 120) * † §	1611	Culdaff, H-16.	30
Convent, Jacques Cartier, (Ry 65) ¶	75	Cumberland Mills, H-17	27
Conways, (Ry 122) ¶		Cushing, I-8 *	163
Cocococache, Champlain	47	Cyr, Bonaventure.	
Cookshire, J-14, (Ry 16) * † ☉	804		
Cookshire Junction, (Ry 71) ¶ Δ † □ see Cookshire, J-14.			
Copperfield, Mégantic	50	Dablon, D-13, (Ry 122) ¶ ≡	30
Corbin, 4 m W Hemmingford, J-10	100	D'Aiguillon, Gaspé.	
Cordon, (Ry 16) ¶ 2¼ m N E St. Prime, I-12.		D'Ailieboust, Quebec.	
Corliss, J-14	25	Dairy Valley, Missisquoi.	
Corner of the Beach, C-9 †	167	Dalesville, I-9	100
Corris, I-13, (Ry 65)	40	Dalhousie Station, Soulanges * ☉	175
Cortereal, Gaspé.		Dalibaire, B-3 *	1503
Côteau du Lac * 3 m N E Coteau Landing, J-9	350	Dalling, I-13	65
Côteau Junction, J-9, (Ry 65) ¶ §	570	Dalmas, Saguenay.	
Côteau Landing, J-9 * † •	578	Danby, I-13, (Ry 65) † §	35
Côteau St. Pierre, ¶ 4 m S W Montreal, J-10	223	Danford Lake * 25 m E Fort Coulonge, I-4	40
Côteau Station, * 2 m N W Coteau Landing, J-9	570	Danville, I-13, (Ry 65) * † §	1017
Côte des Corbeil, Two Mountains.		Darey, H-12, (Ry 16) ¶	
Côte des Neiges, 1 m S W Montreal, J-10 * †	1156	D'Argenson, Laval.	
Côte des Neiges Ouest, Jacques Cartier	500	D'Artagnan, G-15, (Ry 118) ‡	
Côte des Ouimet, Laval.		Darveau, Levis	25
Côte-des-Pères, Quebec.		D'Auteuil, I-13 ¶	429
Côte des Perron, Laval.		D'Autray, Berthier.	
Côte Double, Two Mountains.		Daveluyville, (Ry 67) * † § 5 m N E Aston Jc., H 13.	
Côte Lalande, Two Mountains.		Davidson, (Ry 16) * 10 m S E Wal- tham, I-4.	
Côte Rouge, Two Mountains.		Davidson Corners, Wright.	
Côte's Mills, Wolfe.		Davidson Hill, Shefford.	
Côte St. Emmanuel, Soulanges	35	Deer Lake, (Ry 14) ¶ 1 m E Montfort, I-9.	
Côte St. Etienne, Two Mountains.		Dee Side, D-3	20
Côte St. Hermas, Two Mountains.		Degrosbois, (Ry 16) ¶ 3 m N Nantel, H-9.	
Côte St. Joseph, Richmond.		Delage, Quebec.	
Côte St. Léonard, Laval.		Delagrave, Montmagny	65
Côte St. Louis * 2 m N W Montreal, J-10.		Delamarre, Mégantic.	
Côte St. Michel, Laval	242	De Lesseps, Terrebonne.	
Côte St. Paul, J-11 ¶	1496	Delisle, C-14 *	33
Côte St. Pierre, I-7	60	Dell, I-15	27
Côte St. Thérèse, Laprairie and Napierville, (Ry 65)	200	Delmont, Huntingdon.	
Côte St. Vincent, Two Mountains.		De Lorimier, Maisonneuve * (Sub. Office Côte Visitation P. O.)	1279
Côte Visitation, Maisonneuve †	317	De Lotbinière, H-14, (Ry 67) ¶ † §	
Coulombe, Dorchester.		Demers, Lotbinière.	
Courcelles, I-16, (Ry 118) *		Demeurs, Chicoutimi.	
Cournoyer, Nicolet.		Denison's Mills, I-13	30
Cousineau, Wright.		Denonville, Saguenay.	
Couturval, Rimouski.		Dequen, D-13	40
Covey Hill, J-10 †	140	De Quen Station, (Ry 122) ¶ ≡ 6 m N Dablon, D-13.	
Cowan's, Huntingdon.		De Queylus, Laval.	
Cowansville, J-12, (Ry 16) * † ☉	699	De Ramsay, H-11	75
Crabtree Mills, Joliette, (Ry 14) ≡		De Salaberry, (Ry 114) ¶ 1 m S Beau- port, G-15.	
Craig's Road Station, G-15, (Ry 65) † §		De Sales, (Ry 16) ¶ see St. Francois de Sales Station, I-10.	
Cranberry, Mégantic	30		
Cranbourne, H-16	105		
Creemorne, Pontiac	75		

Towns, etc.—continued.	Pop.
Desbiens Mill, (Ry 122) ¶ ≅ 5 m W Metabetchouan, D-14.	
Deschailions, H-13, (Ry 70) * †.....	1213
Deschambault, G-13, (Ry 16) * † ≅ 1814	
Deschambault Station, Portneuf (Ry 14)	30
Deschene, J-6, (Ry 16) ¶	
Deschênes Mills, † see Duchesne, J-6	367
Deshaies, Nicolet.	
Des Joachims ¶ see Rapides des Joachims	146
Desmarais, (Ry 16) ¶	
Des Ormaux, Labelle, (Ry 16)	
Des Rivières, J-11, (Ry 28) ¶ † ‡	
Desrosiers, Two Mountains.	
Dessaint, (Ry 67) ¶ † ‡ 2 m N E St. Paschal, F-18.	
Detour, Dorchester.	
Dewittville, J-9, (Ry 67)	250
Dieppe, St. John's and Iberville.	
Dillonton, J-13 ¶.....	75
Dimock Creek, Bonaventure.	
Dion Mill, Mégantic.	
D'Israeli, I-15, (Ry 118) * † ‡.....	750
Ditchfield, (Ry 16) ¶ 6 m N W Lake Mégantic, I-16.	
Dixie, (Ry 65) ¶ § 2 m S W Dorval, J-10	25
Dixville, J-14, (Ry 65) * † §	430
Dodd Lake, Labelle.	
Doherty, Pontiac.	
Dolbeau, Saguenay	350
Domaine de Gentilly, H-13 ¶	
Dominion, (Ry 71) ¶	27
Dominion, Jacques Cartier, (Ry 65) ¶ §	30
Doncaster, 4 m S E Clifton, J-14.....	25
Doreil, Charlevoix.	
Dorion, ¶ 1 m from Vandrenil Sta., J-9	275
Dorval, J-10, (Rys 16, 65) Δ § ⊙ □ ..	431
Dorval Station, Jacques Cartier * †	
Doucet, Chicoutimi	
Doucet's Landing, H-13, (Ry 65) ¶ † §.	1051
Douglasburg, Laprairie and Napierville	30
Douglastown, C-8 * †	211
Douglas West, Gaspé.	
Doyle, Pontiac.	
Dozois, Laprairie and Napierville.	
Drummondville East, I-13, (Rys 16, 67) * † Δ § ⊙ □	1451
Drummondville Junction, J-12, (Ry 16) ¶ † ⊙	
Duchêne, (Ry 70) ¶ 2 m N Parisville, H-13.	
Duchesne, J-6 ¶.....	367
Duclos, J-6	45
Dudswell ¶	235
Dudswell Centre, I-14.	
Dudswell Junction, I-14, (Rys 71, 118) † ‡	171
Dufour, Charlevoix.	
Dufresne Mills, I-13 ¶	
Alexis, I-10.	
Du Guesclin, Montmagny.	
Duhamel ⊙ see Mount Laurier, G-7.....	49
Dumais, (Ry 16) ¶	
Dumoine, H-2	50
Dunany, I-9	219

Towns, etc.—continued.	Pop.
Dunboro, J-12.	
Duncan Station, I-12, (Ry 67).....	82
Dundee, J-9 *	47
Dundee Centre, Huntingdon.	
Dunham, J-12 * †	277
Dunkin, Brome	43
Dunraven, I-4	89
Duplin, Richmond, and Wolfe.	
Dupuis Corners, Huntingdon.	
Durocher, (Ry 28) ¶ 6 m S Farnham, J-12.	
Eardley, I-5, (Ry 16).....	1477
East Aldfield, Pontiac.	
East Angus, J-14, (Ry 118) * † ‡.....	1345
East Arthabaska, H-14 ¶	250
East Bolton, J-13	44
East Broughton, J-14, (Ry 118) * † ‡	186
East Broughton Station, Beauce * ..	250
East Clifton, J-14	130
East Dudswell, I-15	20
East Dunham, J-12	100
Eastfarm, (Ry 16) ¶ See East Farnham, J-12.	
East Farnham, J-12 *	250
East Hereford, J-15 †	150
East Hill, Brome.	
East Little River, D-8 ¶	
East Magdala, H-14	50
Eastman, J-13, (Ry 16) * ⊙	630
Eastman Junction, (Ry 16) ¶ † ⊙	
East Pinnacle, Missisquoi.	
East Sherbrooke, (Sub. Office Sherbrooke P. O.)	
East Templeton, I-6, (Ry 16) * † ⊙ •	874
Eaton, see Eaton Corner, J-14.....	100
Eaton Corner, J-14, (Ry 71) ¶	100
Echo Vale, I-16	55
Edina, I-9 ¶	
Edmondville, Lotbinière.	
Egg Island, Saguenay †	63
Egypte, I-12	121
Ekron, Huntingdon.	
Elgin Road, F-17, (Ry 67).....	25
Ellard, (Ry 16) ¶ 13 m S Maniwaki, H-6.	
Ellis Bay, Saguenay.	
Elmside, 3 m from Bristol, J-5.....	66
Emard, Beauharnois.	
Emileville, J-12	107
Entrelac, Terrebonne (Summer P. O.)	
Entry Island, Gaspé.	
Erle, I-14.....	40
Escourt, Temiscouata.	
Escuminac, D-4, (Ry 124)	55
Escuminac Flats, Bonaventure.	
Esquimaux Point, Saguenay * †	9937
Etang des Caps, Gaspé.	
Etang du Nord, Gaspé * †	50
Eustis, (Ry 12) 9 m S Sherbrooke, J-13.....	315

<i>Towns, etc.—continued.</i>	Pop.	<i>Towns, etc.—continued.</i>	Pop.
Fabre, Pontiac.		Gagné, Bonaventure.	
Fairfax, J-13.	26	Gallups Hall Richmond and Wolfe.	
Farley, (Ry 16) ¶ 7 S Maniwaki, H-16.		Galsion, I-15.	
Farm Point, (Ry 16) 2 m N W Cascades, I-6.		Galvin, (Ry 16) ¶	
Farnam's Corners, Missisquoi	50	Gamelin, Laval *	
Farnboro, ¶ 2 m S W West Shefford, J-12	50	Garland, J-10.	35
Farnon, J-12	200	Garneau, F-18 *	
Farnham, J-12, (Rys 16, 28) * † Δ § ⊙ □	3144	Garneau Junction, G-12, (Rys 14, 16) † Δ ≅ ⊙ □	
Farnham Centre, 2 m S W Brigham, J-12	258	Garthby, I-15, (Ry 118) ¶ † ‡	108
Farrelton, I-6, (Ry 16) *	100	Garthby Station * see Garthby, I-15	108
Fassett, (Ry 16) * † ⊙ 4 m E Montebello, I-8.		Garthby West, Wolfe.	
Father Point, C-20, (Ry 67) * † ●	46	Gascons, D-8, (Ry 1) * †	250
Faubourg St. Jean Baptiste, Quebec *		Gasparine, J-10.	50
Fauvel, Bonaventure.		Gaspe, C-8 * † ●	454
Fecenys, (Ry 122) ¶		Gaspe Bay, South, C-8	25
Ferme Neuve, Labelle *	30	Gaspé Harbour, Gaspé.	
Ferme Rouge, Labelle.		Gatineau, I-6, (Ry 16) ¶	1583
Fermont, Champlain. ¶	700	Gaudette, Pontiac.	
Fernetville, H-11	198	Gauthier, Laval, (Ry 16) ¶	
Fer, Labelle, (Ry 16) ¶		Gauthier's Mill, (Ry 14) ¶ ≅ 2 m N Lac aux Sables, G-13.	
Pief Choisy, Vaudreuil.		Geneva, I-9	125
Fieldville, Wright.		Genoa, I-9	75
Filion, (Ry 14) ¶ 3 m S E Shawbridge, I-9.		Gentilly, H-13, (Ry 120) * † §	2158
Fishers Siding, (Ry 16) ¶ 2 m N E Knowlton, J-13.		Georgeville, J-13 * †	400
Fir Grove, Dorchester.		Geraldine, J-10.	
Fitch Bay * † 4 m S E Georgeville, J-13.	500	Germian, (Ry 16) ¶	
Flanders, Compton	44	Gethsemani, Saguenay.	
Fleurant, D-5.	30	Gignacs Siding, (Ry 122) ¶ 1 m N Jacksons Siding, G-14.	
Fleuriau, D-21 ¶		Gilbert-des-Caps, Charlevoix †	
Fleury, (Ry 120) ¶		Gilman, Brome	169
Flodden, J-13, (Ry 16)	51	Gingras, G-14.	
Floods, (Rys 16, 122) ¶		Girard, J-11, (Ry 65)	150
Fonderie, Gaspé.		Girard Siding, (Ry 120) ¶ 3 m N Tamaska, H-12.	
Fontarabie, Maskinongé.		Giroux, (Ry 124) ¶ 7 m E Carleton, D-5.	
Fontenelle, Gaspé	66	Glenada, (Ry 14) ≅ 2 m S W Shawenegan Jct., G-12.	
Fontenoy, I-13.	60	Glen Almond, I-6 †	50
Fords, (Ry 16) ¶		Glen Bean, H-6.	50
Fordyce Corners, Missisquoi.		Glenelm, Huntingdon.	
Fort Coulonge, I-4, (Ry 16) * † ⊙	482	Glen Emma, (Ry 67) ¶ 7 m N Mill Stream, D-3.	
Fortier, Lotbinière, (Ry 67) ¶		Glenfarne, Wright, (Summer P. O.)	
Fortierville, H-14, (Rys 70, 120) ¶ §	275	Glen Farnham, J-12 ¶	
Fort William, I-3.	65	Glen Iver, J-13.	20
Fossambault, Portneuf.		Glenlivet, I-6.	
Foster, J-13, (Ry 16) * † ⊙	50	Glen Lloyd, H-15	50
Fox River, B-8 * †	1456	Glen Murray, H-14	100
Frampton, H-16 * †	300	Glen Sutton, J-13.	122
Francoeurville, Drummond.		Glen-ton, (Ry 16) ¶ ⊙ see Glen Sutton, J-13.	
Franklin Centre, J-10 *	40	Glen Villa, Stanstead, (Summer P. O.)	
Frappier, I-11, (Ry 120) ¶		Gobeil, E-17.	41
Fraserville ¶ † see Rivière du Loup, E-18	4569	Godbout, B-2 †.	81
Fréchette, G-15.	100	Golden Bay, Richmond and Wolfe.	
Frelighsburg, J-12 (Ry 28) * † §	231	Goldwin, Pontiac.	
Frontenac, Lotbinière, see Fortierville, H-14.	40	Golf Links, (Ry 16) ¶ 1 m E Dorval, J-10.	
Frontier, J-10	55	Gore, (Ry 65) 3 m E Lisgar Station, I-13.	
Frost Village, Shefford	125	Gosford, G-14.	
Fulford, J-13, (Ry 16)	200	Gosford Station, Portneuf, (Ry 122) ¶ Goshen Road, Richmond.	
		Gosselins Mills, Compton.	
		Gould, I-15	400
		Gould Station, I-15, (Ry 16) ⊙	400
		Goupil, Arthabaska.	

<i>Towns, etc.—continued.</i>	Pop.	<i>Towns, etc.—continued.</i>	Pop.
Gracefield, H-6, (Ry 16) * + ☉	579	Halversen, I 5	70
Graham, Vandreuil	57	Hamelin, Portneuf.	
Granboro', J-12	46	Hamilton, Montcalm, (Ry 14) ¶ ≅	
Granby, J-12, (Ry 28) * + §	3773	Hamilton Centre, Bonaventure ¶	400
Grand Cascapedia, D-6 *	110	Hamilton Cove, C-19.	
Grand Chicot, Two Mountains.		Hardwood Flat, J-15.	
Grande Baie, D-16 * +	543	Hardwood Hills, Richmond.	
Grande Begeronnes, Chicoutimi	154	Harlaka Junction, G-15, (Rys 67 118) ¶ +	
Grande Frèrièrè, I-9	250	Harrington East, I-8	150
Grande Grève, C-8 * +	155	Harrington Harbour, Saguenay +	163
Grande Ligne, Dorchester ¶	127	Harvey Hill Mines, H-15 ¶	20
Grande Ligne, J-11, (Ry 65) † <	89	Harwood, Vandreuil.	
Grande Montagne, Beauce.		Haseville, J-12	50
Grand Entry, Gaspè * +	263	Hatley, J-14 *	261
Grandes Coudées, I-16	40	Hatley Centre, Stanstead.	
Grandes Piles, G-12, (Ry 16) * + ☉	624	Hauteur, Rimouski.	
Grand Etang, Gaspè ¶	50	Havelock, Huntingdon ¶	140
Grande Vallée, B-7 †	1000	Havre Aubert, Gaspè *	350
Grand Fonds, Charlevoix.		Hawkesbury, (Ry 14) ¶	
Grand Mère, Champlain, G-12, (Rys 14, 16) * + Δ ≅ □	3024	Hazel Land, Argenteuil.	
Grand Mère Village, Champlain, G-12, (Rys 14, 16) *		Heathton, 1 m N E South Barns- ton, J-14	80
Grand Métis, C-21 * +	286	Hebert, H-7, (Ry 16) ¶	
Grand Pabos, D-8, (Ry 1) †	260	Hébert, Mégantic.	
Grand Pabos Centre, Gaspè.		Hébertville, D-14 *	
Grand Pabos Ouest, Gaspè.		Hebertville Station, D-14, (Ry 122) * + ≅	2560
Grand Pré, Maskinongé.		Hedleyville Junction, (Rys 14, 122) ¶ + ≅	
Grand Rang, 2 m S W St. Hyacinthe, -12	23	Helena, J-9	45
Grand River, C-8 * + ●	325	Hemison, H-16	32
Grand St. Esprit, H-13.	115	Hemmingford, J-10, (Ry 65) * + <	338
Grand St. Louis, Nicolet.		Henderson's Grove, Mégantic	30
Graniteville, Stanstead	70	Henderson Vale, Mégantic.	
Gravel, Bonaventure.		Henrysburg, J-11, (Ry 65) † §	100
Greece's Point, Argenteuil	207	Henrysburg Centre, St. John's and Iberville.	
Greenlay, Richmond.		Henryville, J-11, (Ry 120) * + ☉	700
Green River, E-19	65	Herdman, J-9	104
Greenshields, I-14 ¶	112	Hereford, K-14 †	46
Greer Mount, Pontiac	15	Hereford Station, (Ry 71) ¶ see East Hereford, K-15.	
Grénier, Beauce.		Hérouville, (Ry 14) ≅ 3 m N E Garneau Junction, G-12	120
Grenville, I-8, (Rys 14, 16, 20) * + ≅ ☉ ●	2489	Hervey Junction, (Ry 14) * + ≅ 4 m N E Ste. Thècle.	
Griffin, J-13	27	Hetière, Bellechasse.	
Griffin Cove, B-8 * +	118	Heyworth, Wright	48
Griffin Cove East, Gaspè.		High Falls, Wright.	
Grindstone Island, Gaspè * +	90	High Forest, Compton.	
Grondines, G-13 * +	1205	Highlands, (Ry 16) ¶ + ☉ 2 m N Caughnawaga, J-10.	
Grondines Est, Portneuf.		High Rock, I-6 ¶	
Grondines Station, G-13, (Ry 16) ☉	17	Highwater, K-13, (Ry 16) † ☉	
Gros Morne, Gaspè.		Hill Crest, J-19	35
Grosses Roches, B-3.		Hill Head, I-9	28
Guay, Levis * +		Hillhurst, J-14, (Ry 65) † §	75
Guienne Rimouski.		Hillside, Missisquoi.	
Guigues, I-7 *	800	Hinchinbrooke, Huntingdon ¶	125
Guité, Bonaventure.		Hindelang, Nicolet.	
Guthrie, Missisquoi.		Hochelaga, I-11, (Ry 16) * + ≅	56919
		Hocquart, Temiscouata.	
		Hodgins, Pontiac.	
Hadlow, G-15, (Rys 65, 67) ¶	600	Holland's Mills, I-6	30
Hadlow Cove, G-15	163	Hollow Glen, Wright.	
Haldimand, Gaspé.		Holton, J-10, (Ry 65)	50
Halifax ¶ † see St. Ferdinand, H-14	166	Honfleur, Bellechasse.	
Hallerton, J-11	48	Honoréville, St. John's and Iberville.	
Hall's Stream, J-15, (Ry 71)	100	Hopetown, D-7	150

<i>Towns, etc.—continued.</i>	Pop.	<i>Towns, etc.—continued.</i>	Pop.
Hotel Junction, (Ry 122) ¶ 5 m W Valcartier, G-14.		Jeanne d'Arc, Wright.	
House Harbour, Gaspé * †.....	451	Jeannotte, (Ry 122) ¶ ≅ 4 m W La Tuque Junction, F-13.	
Howard Vailey, Argenteuil.		Jersey Cove, Gaspé.	
Howick, J-10, (Ry 65) * † §.....	359	Jersey Mills, H-16.....	56
Howick Junction, J-10, (Ry 65) ¶ † §		Jetté, Nicolet.	
Howick Station, Chateaugay *		Joques, Bagot.	
Huberdeau, Argenteuil (Ry 14) * ∅..	120	Johnville, J-14, (Ry 16) * ∅.....	169
Hudson, J-9, (Ry 16) * † ∅ *	500	Joliette, H-11, (Rys 14, 16) * † Δ ≅ ∅ □	4230
Hudson Heights, (Ry 16) * † 1 m from Hudson, J-9.....	75	Joliette Junction, I-11, (Ry 16) ¶ †	
Hull, J-6, (Ry 16) * † Δ † § ∅ □... 13993		Joliette Junction, (Ry 14) ¶ 1 m N Joliette, H-11.	
Hunter's Point, I-19.		Joly, Lotbinière.	
Hunterstown, H-11.....	553	Jonquières Nord, (Ry 122) * † ≅....	200
Huntingdon, J-9, (Rys 65, 106) * † Δ † § □.....	1122	Jonquières Nord, Chicoutimi and Saguenay.	
Huntingville, J-14.....	150	Jonquières Sud, Chicoutimi.	
		Joseph Farm, Wright.	
		Joynt, I-5.....	32
		Julien, G-13, (Ry 14) ≅	
Iberville, J-11, (Rys 16, 28) * † Δ † § ∅ □.....	1512	Kamouraska, E-18 * †.....	600
Iberville Junction, St. John's and Iberville, (Rys 16, 120) ¶ † ∅		Kanawana, Terrebonne, (Summer P. O.)	
Ile-aux-Noix, St. John's and Iberville * Iles-de-May, Saguenay.		Kartoum, (Ry 16) ¶	
Indian Lorette, G-15, (Ry 122) * † ≅....	1227	Katevale, J-13.....	30
Inkerman, Pontiac ¶.....	116	Kazubazua, I-6, (Ry 16) * † ∅.....	140
Inlet, Labelle.....	52	Keene's, (Ry 16) ¶ 13 m S E Mégantic, I-16	
Inverness, H-14 *	1542	Kegaska, Saguenay.	
Ireland, North, Mégantic ¶.....	50	Keith, I-15.	
Ireland, South, Mégantic ¶.....	150	Kelly, Bonaventure.	
Irishtown, (Ry 124) ¶ 7 m E Maria, D-5.		Kelly's Mills, Mégantic.	
Iron Hill, J-12.....	100	Kelso, J-9.....	125
Ironside, I-6, (Ry 16).....	218	Kelvin Grove, Huntingdon, (Ry 65).	
Iroquois Club, (Ry 122) ¶ ≅ 1 m S Stadacoma, F-13.		Kempt, C-21, (Ry 67) ¶ †	
Iroquois Siding ¶ 2 m S E Caughnawaga, J-10.....	200	Kempt Road Hill, Bonaventure.	
Irvine, H-15.....	100	Kempt Station, Rimouski.	
Island of Anticosti, Gaspé ¶.....	508	Kennebec Line, I-17 ¶	
Island Brook, J-15.....	46	Kennedys, (Ry 122) ¶	
Isle aux Coudres, F-17.....	1055	Kénogami, D-14, (Ry 122) ≅	
Isle aux Grues, F-16 *	500	Kensington, J-9 †.....	200
Isle Bizard, J-10.....	1000	Kiamika, Labelle.....	875
Isle Cadieux, (Ry 16) ¶ 4 m S E Como, I-9.		Kierkoski, St. Hyacinthe.	
Isle Dupas, H-11, (Visitation, St. Ignace).....	1148	Kilbain, J-9 †.....	110
Isle of Skye, Huntingdon.		Kilbourn Siding, Laval.	
Isle Perrot, J-10.....	415	Kildare, H-10 *	342
Isle Perrot, Nord, J-10.....	100	Killowen, Argenteuil.	
Isle Verte, D-19, (Ry 67) * † §.....	4569	Kimberley, Mégantic.	
Ives, I-14.....	23	King Corner, Mégantic.	
Ivry, Témiscouata.....	89	Kingsburg, (Ry 70) ¶ 1 m W Villeroy, H-14.	
Ivry, (Ry 16) ¶ ∅ 3 m E Nantel, H-9.		Kingsbury, I-13, (Ry 16) * ∅.....	237
		Kingscroft, J-14.....	50
		Kingsey Falls, I-13 *	436
		Kingsey Station, I-13, (Ry 65) ¶ † §	
		Kingsmere, Wright.	
		Kinnear's Mills, H-13 *	58
		Kippewa, I-19, (Ry 16) * ∅.....	75
		Kippewa Junction, I-19, (Ry 16) ¶	
		Kirkdale, 3 m S E Ulverton, I-13.....	50
		Kirk's Ferry, I-6, (Ry 16).....	68
		Kirwan, Pontiac.	
Jacksons Siding, G-14, (Ry 122) ¶		Kiskisink, E-13, (Ry 122) † ≅.....	40
Jacques Cartier Junction, J-10, (Ry 16) ¶		Knowlton, J-13, (Ry 16) * † ∅.....	760
Jamieson, Mégantic.		Knowlton Landing, J-13 †	
Jarnac, Labelle.....	35		

<i>Towns, etc.—continued.</i>	Pop	<i>Towns, etc.—continued.</i>	Pop.
La Baie, H-12, (Ry 120) * † §	1902	Lac Nantel, Terrebonne	80
La Baie, Shawanegan, Three Rivers and St. Maurice *		Lac Noir, F-17 ¶	140
La Baleine, Charlevoix.		Lacolle, J-11, (Rys 65, 97) * Δ § ∅ < □	360
Labarge Mill, H-9, (Ry 16) ¶		Lacolle Junction, J-11, (Ry 65) ¶ †.	510
La Baronie, Chambly and Vercheres.		Lacolle Station, St. Johns and Ibeville †	510
Labarre, Chicoutimi, (Ry 122) ≅		La Conception, H-8 *	175
La Barrière, H-10	35	La Conception Station, Labelle.	
La Bataille, St. John's and Iberville.		La Corniche, Montcalm.	
Labelle, H-8, (Ry 16) * † ∅	200	Lacoste, H 8, (Ry 16) ¶	
Laberge, J-10	60	Lac Ouarean, H-9 ¶	
Labrie, Bellechasse.		Lac Pierre Paul, (Ry 14) ¶ ≅ 4 m N St. Tite, G-12.	
La Butte, Bonaventure.		Lac St. Joseph, G-14	28
L'Acadie, J-11, (Ry 16) † Δ ∅ □	1501	Lac St. Pacome, Kamouraska.	
L'Acadie Station, J-11, (Ry 65) <		Lac Sec, Chicoutimi.	
Lac à Beauce, Champlain.		Lac Sergent, Portneuf.	
Lac à Foin, Labelle.		Lac Simon Summit, (Ry 122) ¶ 3 m S E Perthuis, G-13.	
Lacaille, (Ry 16) ¶		Lac Tremblant, Terrebonne, (Summer P. O.)	
Lac à la Croix, Chicoutimi.		Lac Windigo, Labelle.	
Lac à la Tortue, G-12, (Ry 16) * † ∅.	400	Ladd's Mills, Stanstead	25
Lac-à-Laurent, Chicoutimi.		La Décharge, C-15	50
La Carrière, I-12	40	La Descente-des-Femmes, Chicoutimi.	
Lac au Lard, F-13, (Ry 122) ¶ ≅		Ladysmith, Pontiac *	100
Lac au Lard Siding, (Ry 122) ¶ 1 m W Lac au Lard, F-13.		La Fayette, G-17 ¶	158
Lac au Saumon, D-2, (Ry 67) * † §		Laflamme, Shefford.	
Lac aux Brochets, Champlain.		La Fourche, (Ry 14) ¶ ≅ 13 m N E St. Jérôme, I-9.	
Lac aux Sables, G-13, (Ry 14) † ≅	80	Lagacé, Bonaventure.	
Lac aux Sables Station, Portneuf *		Laganière, Portneuf.	
Lac Bellemare, Three Rivers and St. Maurice.		La Guerre, J-9	100
Lac Bouchette, Chicoutimi * † see Lake Bouchette, D-13.		Lake Aylmer, I-15	110
Lac Brière, Chicoutimi.		Lake Beauport, G-15	50
Lac Castor, Labelle, (Ry 16).		Lake Bouchette, D-13, (Ry 122) ¶ ≅	57
La Chapelle, Two Mountains.		Lake Cayamont, Pontiac.	
Lac Charlebois, Terrebonne, (Summer P. O.)		Lake Chapleau, (Ry 14) ¶ 3 m S E Lake Wonish, I-9.	
Lac Clair, Chicoutimi	32	Lake Edward, E-13, (Ry 122) * † ≅	75
Lac des Commissaires, Chicoutimi.		Lake Etchemin, H-17 *	136
Lac des Ecorces, Labelle *		Lakefield, I-9	80
Lac Desert, Labelle.		Lake Mégantic * † see Megantic, I-16.1882	
Lac des Iles, Labelle, (Ry 122).		Lake Park, (Ry 16) ¶ 2 m S W Rock Forest, J-13.	
Lac Echo, Terrebonne, (Summer P. O.)		Lake Sergent, G-14, (Ry 122) ¶ ≅	
Lachenaie, I-10	657	Lake Scott, F 13, (Ry 122) ¶ ≅	
La Chevrotière, G-13, (Rys 14, 16) † ≅ ∅	100	Lakeside, Jacques Cartier, (Rys 16, 65) §	50
Lachevrotière Junction, (Ry 14) ¶ ≅		Lake St. Charles, Quebec.	
Lac Grosseau, Labelle.		Lake St. Joseph, G-14, (Ry 122) ¶ † ≅	50
Lachine, J-10, (Ry 65) * † §	5561	Lake St. Joseph Hotel, Portneuf, (Ry 122) † (Summer P. O.)	
Lachine Locks, Jacques Cartier *		Lake St. Mary, I-6 *	52
Lachine Rapids, J-10.		Lake St. Paul, (Ry 120) ¶ 2 m N Becancour, H-13.	
Lac Hamqui, Rimouski.		Lakeview, I-8	150
Lachute, I-9, (Rys 14, 16) * † Δ ≅ ∅ □ 2022		Lakeview House, Portneuf, (Summer P. O.)	
Lachute Junction, (Ry 14) ¶ ≅ 2 m S W Lachute, I-9.		Lake Wayagamac, Champlain, (Summer P. O.)	
Lachute Mills, I-9 *	1050	Lake Weedon, I-15 * † †	512
Lac la Pêche, Champlain (Summer P. O.)		Lake William, Mégantic.	
Lac Long, (Ry 122) ¶ ≅ 8 m N Kiskisink, E-13.		Lake Wonish, I-9, (Ry 14) ¶	
Lac Long, Temiscouata.		Lalancette, Chicoutimi and Saguenay.	
Lac Malouin, (Ry 122) ¶ ≅ 4 m N Beaudet, F-13.		Lalament, Pontiac.	
Lac Manitou, Terrebonne.		La Macaza, Labelle *	35
Lac Manitou Sud, Terrebonne, (Summer P. O.)		La Mare, Charlevoix	20
Lac Marcis, Terrebonne.		Lamartine, F-17 *	549
Lac Marquis, Rimouski.			
Lac Masson, H-9 *	658		
Lac Mercier, Terrebonne.			

<i>Towns, etc.—continued.</i>	Pop.	<i>Towns, etc.—continued.</i>	Pop.
Lambert, (Ry 16) ¶		Laurentides Siding, (Ry 122) ¶ 1 m N	
Lambton, I-15 *	1780	W Laurentides, F-13.	
Lambton Station ¶ †	50	Laurier, Lotbinière, H-14, (Ry 67) † §	
La Miche, Montmorency.		Laurièreville, Mégantic * †	
La Montagne, Mégantic.		Lanzon, Lévis * †	3416
La Nation, Labelle.		Laval, F-15	75
Lancot, Laprairie and Napierville.		Lavaltrie, I-11, (Ry 16) * † ∅	200
Landreville, J-9	105	Lavaltrie Station, Joliette.	
Land Villa, G-16 ¶	70	L'Avenir, I-13 *	866
L'Ange Gardien, (Ry 114) ¶ † see		Laverdière, (Ry 114) ¶ 1½ m S W	
Ange Gardien, G-15,		Château Richer, G-16	
L'Ange Gardien East, J-12, (Ry 16)		Laverge, (Ry 67) ¶ 3 m S W Forest-	
¶ † ∅		dale, H-14.	
L'Ange Gardien East, (Ry 114) ¶ 1 m		Laverge, Arthabaska.	
N E Ange Gardien, G-15.		Laverlochère, Pontiac.	
Langevin, H-17	26	La Vernière, Gaspé.	
Langlois, (Ry 16) ¶ near St. Therese,		Lavigne, J-9, (Ry 16) ¶ ∅	
I-10.		La Visitation, Yamaska	46
L'Annonciation, Labelle * †	316	La Visitation de Champlain, Cham-	
Lanoieville, I-12 ¶	135	plain ¶	399
Lanoraie, I-11, (Ry 120) *	674	Lavoie, (Ry 16) ¶	
Lanoraie Station, I-11, (Ry 16) † ∅		Lawrence, (Ry 16) ¶	
L'Anse à Brillant, Gaspé	20	Lawrenceville, J-13, (Ry 16) * ∅	258
L'Anse à Giles, F-17, (Ry 67)	78	Leadville, Brome.	
L'Anse à Giles Station, L'Islet.		Learned Plain, J-15	25
L'Anse à la Barbe, Bonaventure.		Le Baron, (Ry 16) ¶	
L'Anse à la Cabane, Gaspé	229	Le Bassin, (Ry 122) ¶	
L'Anse à la Louise, Gaspé *	50	Le Bras, H-16	59
L'Anse au Beaufils, C-9	250	Leclair, Pontiac.	
L'Anse au Foin, D-16	329	Leclerc Islands, (Ry 14) ¶ 2 m S E	
L'Anse-aux-Cousins, Gaspé.		Chapleau, I-9.	
L'Anse à Valteau, Gaspé.		Leclercville, G-14	526
L'Anse Creuse, Chicoutimi and		Le Debouli, Rouville.	
Saguenay.		Leduc, (City of Montreal) Hochelaga *	
L'Anse St. Jean, D-17 † •	100	Leduc, (Ry 120) ¶ 3 m N Clarenceville,	
La Patrie, J-15 *	1000	J-11.	
La Perade, (Ry 16) ¶ † ∅ 7 m S W		Leeds, H-15, (Ry 118) ¶	215
Grondines, G-13.		Leeds Village, H-15 *	215
La Petite Rivière St. François, F-16.	150	Lefebvre, (Ry 16) ¶	
Lapeyrière, Gaspé.		Leggatts Point, Rimouski.	
La Plaine, I-10, (Ry 16)	131	Lemay Wright.	
Laprairie, J-10, (Ry 65) * † <	1451	Lemesurier, H-15	100
La Présentation, I-11	1273	Lemieux, H-13, (Ry 67) † §	
La Ratière, Chicoutimi, (Ry 122) ≅		Lemire, Drummond and Arthabaska.	
La Renaudière, Montmagny.		Lemoine, (Ry 114) 24 m N E L'Ange	
Laroche, Brome	59	Gardien East, J-12.	
Larochelle, H-14	60	L'Enfant Jésus, Beauce ¶	391
La Rochelle, Nicolet ¶	342	Lennoxville, J-14, (Rys 12, 16, 65)	
Larose, I-8, (Ry 14) ¶		* † ∆ † § ∅ □	1120
L'Artifice, Chateauguy.		Leopold, I-9	25
Lascelles, I-6	52	Lepage, I-10, (Ry 16) ¶	
L'Ascension, Montcalm *		Le Petit Bois Franc, Temiscouata.	
L'Assomption, I-11, (Ry 14) * † ≅	2713	L'Épiphanie, I-10, (Rys 14, 16) * †	
L'Assomption de Berthier, Mont-		∆ ∅ ≅ □	1191
magny ¶	125	Le Rapide, Portneuf.	
La Tabatière, Saguenay.		Leroux, (Ry 16) ¶	
Laterrière, D-15	359	Lesage, (Rys 14, 16) 9 m N W St.	
Lathrops, (Ry 71) ¶ 3 m S Lime Ridge,		Jérôme, I-9.	
I-14.		Les Chenaux, Montmorency.	
La Tortue, (Ry 97) 5 m N St.		Les Dalles, I-10	59
Edouard De Napierville, J-11.		Les Eboulements, F-17 * † •	2369
Latourelle, Wright.		Les Ecurieuls, G-14, (Ry 14) * † ≅	521
La Trappe, * 2 m S Lime Ridge, I-14	115	Les Escoumains, D-19 *	401
La Tuque, F-12, (Ry 122) * ≅	500	Les Fonds, G-14	55
La Tuque Junction, F-13, (Ry 122) † ≅		Les Grands Déserts, Québec.	
Laurel, I-9	45	Les Gres, H-12, (Ry 16) ¶	
Laurence, Montcalm.		Les Hurons, Rouville.	
Laurentides, I-10 * see St. Lin.		Leslie, Gaspé.	
Laurentides, F-13, (Ry 122) ¶ ≅	934	L'Espervier, (Ry 122) ¶ ≅	
		Les Petites Bergeronnes, D-18	28

Towns, etc.—continued.	Pop.
Les Petites Bergeronnes Ouest, Saguenay.	
Lessard, Beauce	25
Les Saules, Quebec	60
Les Vieilles Forges, Three Rivers and St. Maurice.	
Letellier, F-18. (Ry 67) ¶	
Lévis, G-15, (Rys 65, 67, 118) * + Δ † □	7783
Lévrard, (Ry 120) ¶ 5 m N Gently, H-13.	
L'Heureux, (Ry 16) ¶	
Libbytown, 3 m S E Ayers Flat, J-13.	71
Lime Ridge, I-14, (Ry 71) * + †.	300
L'Immaculée Conception, Bonaventure.	
Limoilou, G-15, (Rys 114, 122) *	360
Limoilou Junction, (Ry 14) ¶ † ≈ 1 m W Quebec, G-15.	
Linda, J-14.....	25
Lineboro, J-13.....	40
Linière, H-16 *	219
Lisgar Station, I-13, (Ry 65) † §	150
L'Islet, F-17 * +	2454
L'Islet Station, F-17. (Ry 67) † §	
Litchfield, Pontiac ¶	263
Little Cascapedia, D-6 *	157
Little Métis, C-21 * +	294
Little Métis Station, C-22, (Ry 67) † §	89
Little Pabos, D-8	106
Little River, East, D-9	200
Little River, West, Gaspé †	110
Little Village, (Ry 114) ¶ 1 m N E Montmorency Falls, G-15.	
Lizotte, (Ry 122) ¶ ≈ 13 m N Kiskisink, E-13.	
Lochaber, I-7, (Ry 16) ¶ ∅	
Lochaber Bay, I-7.....	50
Long Point, Laval * +	647
Long Point of Mingan, Saguenay †	193
Long Swamp, (Ry 16) ¶ 3 m S W Gould Station, I-15.	
Longue Pointe, I-11, (Ry 14) ¶ † ≈	
Longueuil, I-11, (Ry 120) * + §	2835
Longueuil, South, Chambly and Verchères ¶	281
Longueuil, West, (Ry 120) ¶ † ½ m W Longueuil, I-11.	
Loranger, H-7, (Ry 16) ¶	
Lorette, G-15, (Ry 16) * + ∅	1279
Lorette Junction, (Ry 14) ¶ ≈	
Lorne * 4 m N Danville, I-13.....	80
Lorne House, Charlevoix.	
Lorrainville, Pontiac *	58
Lost River, I-8	150
Lotbinière, G-14 * +	603
Louisa, I-9	26
Louiseville, H-12, (Ry 16) * + ∅	1565
Loulay, Labelle.	
Lourdes, H-14, (Ry 70).....	101
Lourdes du Blanc Sablon, Saguenay.	85
Low, I-6, (Ry 16) * + ∅	115
Lower Flodden, Richmond and Wolfe.	
Lower Ireland, H-15.....	80
Lucerne, I-6.....	20
Lumsden's Mills, I-19, (Ry 16) ∅	35
Luskville, I-6.....	90
Lysander, H-15.....	125
Lyster Station, H-14, (Rys 65, 70) * + §	175
Lytton, Wright.	

Towns, etc.—continued.	Pop.
McBean, Wright.	
McCagg, Pontiac.	
McCarthy, St. Johns and Iberville.	
McKee, Pontiac, (Ry 16) ∅	11
McLaurin, (Ry 16) ¶	
McLeod's, (Ry 16) ¶ † 14 m W Mégantic, I-16.....	65
McLeod's Crossing, Compton	40
McNeil's Crossing, Brome.	
Mabel, Argenteuil	30
Macaza, H-8, (Ry 16) ¶ ∅	
Macdonald College, Jacques Cartier.	
Macnider, C-2 ¶	1405
Maddington Falls, H-13.....	366
Magenta, J-12	35
Magog, J-13, (Ry 16) * + ∅	3515
Magoon's Point, J-13.....	25
Magpie, Saguenay †	250
Mailhot, Mégantic.....	50
Maisonneuve, I-11 (Ry 14) * + ≈	4518
Maizerets (Ry 114) ¶ 1 m N E Quebec, G-15.	
Malbaie ¶ † see Murray Bay, E-17....	826
Mal Bay, C-8 † •	125
Malmaison, J-12 †	45
Malvina, J-15 †	
Malvina Station, J-15, (Ry 71) ¶	
Manche d'Épée, Gaspé.	
Mandeville, H-11	110
Manicouagan, Saguenay *	210
Maniwaki, H-6, (Ry 16) * + ∅	819
Maniwaki Junction, (Ry 16) ¶	
Manoir, Richelieu, Charlevoix † (Sumner, P. O.)	
Manseau, H-13, (Ry 67) * + §	
Mansonville, J-13, (Ry 16) *	336
Manuel, (Ry 16) ¶	
Maple Grove, H-14 *	125
Maple Grove, (Ry 106) ¶ 2 m N E Beauharnois, J-10.	
Maple Hill, H-15.	
Maple Leaf, J-15.	
Maplemore, Huntingdon.	
Maple Ridge, Pontiac	19
Marbleton, I-14 * +	694
Marbleton Station, I-14, (Rys 71, 118) † †	
Marceauville, Bellechasse.	
Marchildon, Nicolet.	
Marchand, H-12, (Ry 16) ¶	
Marcel, Bonaventure, (Ry 1).	
Maria, D-5, (Ry 124) * + §	2040
Maria Capes, D-5.....	600
Maria East, D-5	200
Marieville, J-11, (Ry 28) * + §	1306
Marigot, Lotbinière.	
Maritana, 3 m E Franklin Centre, J-10.....	90
Mark Crossing, Wright.	
Marks, H-5, (Ry 16) ¶	
Marlington, J-13.....	23
Marlow, I-16	91
Marsboro, I-16.....	29
Marsden, I-14 ¶ †	
Marsouins, Gaspé †	30
Marstons, (Ry 16) ¶ 4 m N Waterloo, J-13	
Martel, Chicoutimi and Saguenay, (Ry 16).	
Martindale, Wright	32
Martin's Lake, I-5.	

<i>Towns, etc.—continued.</i>	Pop.	<i>Towns, etc.—continued.</i>	Pop.
Martinville, J-14 *	170	Mistassini, Chicoutimi * †	104
Maryland, (Ry 16) ∅ see Bristol, I-5	100	Mitchell Station, H-13, (Ry 67) † §	151
Mascouche, I-10, (Ry 16) * † ∅	520	Moe's River, J-14	150
Mascouche Rapids, I-10	36	Mohr, I-5, (Ry 16) ¶	
Masham Mills, I-5 *	2081	Moisie, Saguenay †	450
Maskinongé, H-11 †	2060	Monalea, Argenteuil	
Maskinongé Station, H-11 (Ry 16) ¶ ∅	2060	Mongenais, J-9	150
Massawippi, J-13, (Ry 12) * †	200	Montagne Ronde, Beauce	
Masson, I-7 *	1012	Montauban * see Notre Dame des	
Mastai, Quebec	20	Anges, G-13	
Mastai Junction, (Ry 114) ¶ 2 m N E		Montcalm, H-10, (Ry 14) † ≈	833
Quebec, G-15		Mont Carmel, G-12, (Ry 16) ¶	
Matane, C-2 * †	1176	Mont Carmel, Kamouraska *	1084
Matapedia, D-3, (Rys 67, 124) * † §	2035	Montcerf, * 15 m NW Maniwaki, H-6	89
Mathieu, Beauce		Mont Dufresne, 4 m S Stoke Centre,	
Mawcook, J-12	250	J-14	30
May Bank, Huntingdon		Monte Bello, I-8, (Ry 16) * † ∅	795
Mayo, I-7 †	45	Montfort, I-9, (Ry 14) * ∅	400
Meach Lake, Wright		Montfort Junction, I-9, (Rys 14, 16)	
Meaux, Pontiac		¶ ∅	
Mégantic, I-16, (Rys 16, 11) 8 ¶ † ∆ ‡ ∅ □	1883	Montigny, Labelle	
Meig's Corners, Missisquoi		Mont Joli, ¶ near Ste. Flavie, C-21	822
Melboro, Richmond	51	Mont Laurier, G-7, (Ry 16) ¶ † ∅	
Melbourne, I-13 * †	224	Mont Louis, B-6 †	160
Melbourne Ridge, I-13	25	Montmagny, G-17, (Ry 67) * † §	1919
Melbourne Station, (Ry 16) ¶ 4 m E		Montmorency East	53
Kingsbury, I-13		Montmorency Falls, G-15, (Ry 114) †	300
Melcher, (Ry 16) ¶		Montmorency Junction, (Ry 122) ¶ ≈	
Mellon, (Ry 16) ¶ 4 m S W Walt-		Montmorency Village, Quebec *	130
ham, I-4		Montpelier, I-7	52
Melocheville, J-10, (Ry 106)	300	Montreal, I-11, (Rys 14, 16, 65, 67, 120)	
Menard Corner, St. Johns & Iber-		* † ∆ ‡ § ≈ ∅ < □	358007
ville		Montreal Junction, J-10, (Ry 16) ¶ † ∅	
Menardville, St. Johns and Iberville		en comprenant les Mun. Subur-	
Mercier, G-17	37	baines	405000
Mercier, Quebec, (Ry 16) ¶		Montreal South, Chambly, (Ry 120)	200
Metabetchouan, D-14, (Ry 122) * † ≈	326	Montreal West, (Ry 65) * † 4 m S W	
Metgermette, H-17	125	Montreal, I-11	352
Method's Mills, H-15, (Ry 65) * † §	500	Mont Rolland, Terrebonne *	
Metis Point, C-21 ¶		Mont St. Hilaire, I-11	222
Michaudville, St. Hyacinthe		Mont St. Pierre, Gaspé	
Mignasha, Bonaventure		Mont Tremblant, (Ry 16) ¶ † ∅ 10 m	
Mignasha West, Bonaventure		S E Labelle, H-8	
Miguick, F-13, (Ry 122) ¶ ≈	56	Monument, (Ry 114) ¶ 2½ m N E	
Milan, J-15, (Ry 16) * † ∅	100	Quebec, G-15	
Milby, J-14	100	Moose River, Bagot	
Mill End, I-10, (Ry 16) ¶ † ∅	10933	Moreau, Levis	
Miletta, J-13, (Ry 16)	60	Morehead, I-4, (Ry 16)	30
Millanville, Mégantic		Morigeau, Montmagny	85
Mille Isles, I-9 *	100	Morin, Bellechasse	
Mille Vaches, C-19 †	150	Morin Flats, I-9, (Ry 14) * ∅	100
Millfield, H-15	84	Morin Siding, (Ry 14) ¶	
Millington, J-13	85	Morriset Station, Dorchester, (Ry 118) † ‡	
Millstream, D-3, (Ry 67) †	35	Morrison, (Ry 16) ¶ 3 m W St. Faustin,	
Milnikek, Bonaventure		H-8	
Milot, Three Rivers and St. Maurice		Morrison Station, Terrebonne	
Milton, East, J-12	250	Morse, (Ry 65) ¶ 1 m S E Rockland, I-13.	
Minerve, Labelle	30	Moulin Basinet, Joliette	
Mingan, Saguenay †		Moulin Bersimis, Chicoutimi	
Mink Lake, (Ry 122) ¶ ≈ 1 m N Com-		Moulin Cantin, Arthabaska	
missioners Lake, D-13		Moulin Desbiens, Chicoutimi	
Minton, J-14	57	Moulin Dubois, Arthabaska	
Miquelon, Wolfe		Moulin Fontaine, Wolfe	
Mirabel, (Ry 14) ≈ m W Ste. Schoias-		Moulin Lacroix, Montcalm	
tique, I-9	50	Moulin Mignault, Rimouski	
Miranda, 5 m N W Aird, K-11	52	Moulin Rouge, (Ry 120) ¶ 3 m S	
Miron, Pontiac		Nicolet, H-12	
Misère, Charlevoix		Moulin Tardif, I-14	
Mission St. Louis, Bonaventure		Moulin Tête, Lotbinière	
Missoula, Pontiac		Moulin Vallière, Montmorency	

Towns, etc.—continued.	Pop.
Mountain, (Ry 67) ¶ 3 m N E St. Fabien, D-20.	
Mount Carmel, F-18 ¶	1084
Mount Carmel, H-12 ¶	169
Mount Johnson, J-11, (Ry 120) †	1045
Mount Johnson Station, J-11, (Ry 28) ¶	
Mount Loyal, H-10	26
Mount Maple, I-8	30
Mount Murray, Charlevoix.	
Mount Oscar, J-9	75
Mount Robson, Dorchester.	
Mount Royal Vale † ¶ 4 m S W Montreal, I-11	200
Muldoon, Pontiac.	
Murray, (Ry 16) ¶ 4 m N W Megantic, I-16.	
Murray Bay, E-17 * † §	451
Murrells, Pontiac.	
Musselyville, Bonaventure	48
Mutton Bay, Saguenay †	110
Mystic, J-12, (Ry 16) ∅	200
Nadeau's Crossing, I-16 ¶	50
Namur, I-8 *	210
Nancy, H-11	42
Nantel, H-9 (Ry 16) ¶ † ∅	
Napierville, J-11, (Ry 97) * † ∅	774
Natashquan, Saguenay †	20
Neigette, C-21 ¶	
Neilsonville, Quebec.	
Nenville Portneuf, (Ry 14) * † ≅	
Newaygo, Argenteuil, (Ry 14) ¶	
New Armagh, H-15	100
Newbois, H-15 *	68
New Carlisle, D-7, (Rys 1, 124) * † §	1000
New Erin, (Ry 106) 4 m N Huntingdon, J-9	53
New Glasgow, I-10, (Ry 14) * † ≅	133
Newington, J-14, (Ry 118) ¶	
New Ireland, H-15	50
New Liverpool * 5 m S Levis, G-15.	10
New Mexico, J-15	26
Newport, D-8, (Ry 1) †	36
Newport Point, D-8 * †	70
New Richmond, Bonaventure.	
New Richmond Centre, Bonaventure.	
New Richmond Station, Bonaventure *	
New Richmond West, D-6, (Ry 124) * † §	312
New Rockland, I-13	139
Nichaban, Pontiac.	
Nicolet, H-12, (Rys 67, 120, 124) * † §	3543
Nicolet Falls, I-14	150
Nicolet Village, Nicolet ¶	160
Nominique, H-8, (Ry 16) * ∅	1200
Normandin, C-12 *	1800
Normandin Nord, Chicoutimi.	
North Clarendon, Pontiac	50
North Coaticook, J-14 *	529
North Farnham, Missisquoi.	
Northfield Farm, H-6.	
North Georgetown, 1 m N Howick, J-10	65
North Gore, Argenteuil.	
North Ham, I-14 *	200

Towns, etc.—continued.	Pop.
North Hatley, J-14, (Ry 12) * † ‡	261
North Hill, I-15	30
North Junction, (Ry 16) ¶ 1 m S St. Luc Junction, J-10.	
North Low, I-6	50
North Nation Mills, I-7 *	170
North Onslow, Pontiac	12
North Pinnacle, J-12	130
North Stanbridge, J-12	86
North Stoke, I-14	31
North Stukely, J-13, (Ry 16)	160
North Sutton, J-12	22
North Timiskaming, G-18 *	2000
North Wakefield, I-6, (Ry 16) * † ∅	100
North Wolfestown, H-15	40
Norton Creek, J-10	90
Norway Bay, Pontiac, (Summer P. O.)	
Notre Dame de Betshiamits, C-20 ¶	
Notre-Dame de Grâce † 2 m W Montreal, I-11	2225
Notre Dame de Ham, I-14 *	
Notre Dame de la Merci, H-9	37
Notre-Dame de la Paix, Labelle *	
Notre-Dame de la Salette, I-6 *	100
Notre Dame de l'Assomption ¶ near McNider C-2	207
Notre Dame de l'Espérance, Chambly and Verchères.	
Notre Dame de Levis, Lévis *	1459
Notre-Dame de l'Isle Verte, D-19.	
Notre Dame de Lourdes, Megantic ¶	100
Notre Dame de Pierreville, Yamaska ¶	480
Notre-Dame de Rimouski, D-20	78
Notre Dame Des Anges, G-13, (Ry 14) ¶ † ≅	800
Notre Dame des Bois, J-15 *	111
Notre Dame des Neiges ¶ 3 m from Montreal, I-11	401
Notre Dame de Stanbridge, J-11 *	907
Notre Dame de St. Hyacinthe, St. Hyacinthe ¶	100
Notre Dame du Bonsecours, Rouville ¶	100
Notre Dame du Lac, E-20, (Ry 141) * † §	255
Notre Dame du Lans, H-6 *	50
Notre Dame du Pont Main, H-6	50
Notre Dame du Portage, E-18	180
Notre Dame du Rosaire, Montmagny	43
Nouvelle, D-5, (Ry 124) †	2446
NouvelleWest, (Ry 124) ¶ 2 m W Nouvelle, D-5	75
Noyan, Missisquoi	88
Noyan Junction, J-11, (Rys 65, 120, 140) ¶ † §	
Nutt's Corners, J-11	50
Oak Bay, D-4, (Ry 124) ¶ §	158
Oak Bay Mills, see Oak Point, D-4 † 100	
O'Connell, I-5.	
Odelltown, St. John and Iberville.	
O'Farrell, Dorchester.	
Ogdensburg, Argenteuil.	
Oka, J-9 *	1091
Old Chelsea, I-6	100
Old Fort, Chicoutimi and Saguenay ¶	82

Towns, etc.—continued.	Pop.
Pointe au Boisvert, Saguenay.	
Pointe au Bouleau, D-18	
Pointe au Chêne, I-8, (Ry 16) † ⊕	158
Pointe au Gocmon, Gaspé.	
Pointe au Pic, E-17 * †	537
Pointe aux Anglais, Saguenay.	143
Pointe aux Orignaux, F-17 †	83
Pointe aux Outardes, Saguenay †	
Pointe aux Trembles, G-14 ¶ ≅	848
Pointe aux Trembles, I-11, (Ry 14) * †	215
Pointe aux Trembles, Ouest, Portneuf.	
Pointe Barry, Vaudreuil.	
Pointe Basse, Gaspé †	20
Pointe Bleue, C-13.	525
Pointe Cavagnal, Vaudreuil.	
Pointe Claire, J-10, (Rys 16, 65) * † §	555
Pointe des Monts, Saguenay †	24
Pointe des Roches, Charlevoix.	
Pointe du Lac, H-12, (Ry 16) † ⊕	1337
Pointe Gatineau, Wright *	1588
Pointe Jaune, Gaspé.	
Pointe Levi, G-15, (Rys 65, 67) ¶ §	
Pointe Seche, E-18 ¶	50
Pointe Ste. Anne des Monts, Gaspé.	
Point Fortune, I-9, (Ry 16) * ⊕	264
Point la Garde, (Ry 124) ¶ 5 m W Escuminac, D-4.	
Point Platon, G-14.	
Point St. Charles, (City of Montreal) I-11, (Rys 65, 67) ¶ † Δ § ⊕ < □	
Point St. Charles, East, (Ry 65) ¶ 4 m S Montreal, I-11.	
Point St. Peter, C-9 * †	140
Poire, G-13 ¶	85
Poltimore, I-6 *	78
Pomerleau, Mégantic.	
Pond, (Ry 16) ¶	
Pontbriand, H-15 *	100
Pont Chateau, Soulanges.	187
Pont de la Noreau, Portneuf.	
Pont de Maskinongé * see Maskinongé Station, H-11.	
Pont Etchemin, Levis *	1000
Pontgravé, Montmorency.	
Pont Mousseau, L'Assomption.	
Pont Rouge, G-14, (Ry 16) * † ⊕	318
Pont St. Maurice, Champlain.	
Pont Viau, 6 m N W Montreal, I-11.	217
Popes, (Ry 71) ¶ 10 m S Dudswell Junction, I-14.	
Popeville, (Ry 71) ¶ 2 m S. Clifton, J-14.	
Portage de la Nation, Labelle.	60
Portage du Fort, I-4 * †	449
Port au Persil, E-18 †	100
Port Daniel, Centre, D-7, (Ry 1) * †	300
Port Daniel, East, D-7, (Ry 1) *	350
Port Daniel, West, D-7, (Ry 1)	250
Portelance, Portneuf.	
Portland, East Labelle ¶ †	40
Port Lewis, J-9.	109
Portneuf, G-14, (Ry 14) * † Δ ≅ □	1817
Portneuf Station, G-14. (Ry 16) * † ⊕	108
Potton Springs, (Ry 16) † (Summer P. O.)	
Potvin, Lotbinière.	
Poupore, I-6, (Ry 16)	30
Powerscourt, J-9.	150
Precieux Sang, Nicolet.	
Prefontaine, (Ry 16) ¶	

Towns, etc.—continued.	Pop.
Prével, Gaspé.	
Price, Rimouski * †	227
Primeau, (Ry 106) ¶ 3 m W Adiron dack Junction, J-10.	
Primeauville, Chateauguay.	420
Proulx, G-12, (Ry 16) ¶	
Proulxville, Champlain, (Ry 14) * ≅	168
Providence, Beauce.	68
Providence, St. Hyacinthe ¶	819
Province Hill, Brome.	
Pulp, (Ry 16) ¶	
Quai de Rimouski, D-20 *	169
Quai des Eboulements, F-17 * †	40
Quai Dolbeau, Chicoutimi and Saguenay.	
Quatre Chemins, Dorchester.	
Quebec, G-15, (Rys 14, 16, 114, 122) * † Δ † § ≅ ⊕	73500
Quebec Junction, J 10. (Ry 16) ¶ † ⊕	
Querry, D-6	65
Queylus, (Ry 114) ¶ ½ m W St. Joachim de Montmorency, F-16.	
Quinn, (Ry 16) ¶	
Quinville, I-6.	50
Quyion, I-5, (Ry 16) * † ⊕	682
Racine, I-13, (Ry 16) ⊕	200
Radford, Pontiac †	31
Radnor, Champlain, H-13, (Ry 16) ¶ † ⊕	225
Radnor Forges, Champlain †	439
Radstock, H-10	169
Randboro, J-15	75
Ranelagh, (Ry 65) ¶ 4 m N Brosseau Station, J-10.	
Rang des Dusseau, St. John's and Iberville.	
Rang Mathias, Chicoutimi, (Ry 122)	
Rang Portage, H-11.	
Rang St. Achille, G-13.	
Rapide de l'Original, Wright *	81
Rapide Dufort, Labelle.	
Rapide Lallement, Laval.	
Rapides des Joachims, Pontiac *	146
Ravignan, Dorchester.	30
Rawcliffe, Argenteuil.	
Rawdon, I-10, (Ry 14) * ≅	230
Rawdon Junction, I-10, (Ry 14) ¶ ≅	
Rectory Hill, Mégantic *	
Red Mountain, I-15.	23
Reed's Crossing, Stanstead.	
Reedsdale, H-15 †	
Reed's Mines, I-15 ¶	
Reedsville, Compton.	
Renaud, Two Mountains.	
Renversy, Maskinongé.	
Repentigny, I-11.	611
Restigouche, Bonaventure.	350
Riceburg, (Ry 28) 10 m S Farnham, J-12.	150

<i>Towns, etc.—continued.</i>	Pop.	<i>Towns, etc.—continued.</i>	Pop
Richardson, G-15 ¶		Rivière St. Jean, 120 m from Gaspé	
Richardville, H-15 *	50	Basin, C-8.....	208
Richelieu, J-11, (Ry 28) ¶ † §	389	Rivière Ste. Marguerite, D-18.	
Richmond, I-13 * †	2057	Rivière Trois Pistoles, * 3 m S Trois	
Richmond Station, I-13, (Ry 65) ¶ † §		Pistoles, D-19.....	230
Rigaud, J-9, (Ry 16) * † ⊕ ●	779	Rivington, I-8.....	200
Rigaud sur le Lac, Vandreuil, (Summer P. O.)		Robertson, H-15, (Ry 118) ¶ † ‡	
Rimouski, D-20, (Ry 67) * † §	1804	Robertsonville, Mégantic * see Robertson, H-15 ..	350
Ripon, I-7 *	800	Roberval, C-13 (Ry 122) * † ≅ ●	1248
Rivard's Corners, Compton.		Roberval Hotel, Chicoutimi (Summer P. O.)	
River Beaudette, J-9, (Ry 65) * † §	235	Roberval Ouest, Chicoutimi.	
River Désert, H-6 *.....	221	Robinson, J-15 * †.....	300
Riverfield, Chateauguay *.....	33	Robitaille, D-5.....	75
River Gilbert, H-16.....	107	Robson, I-13.....	36
River Gilbert Gold Mines, H-16.....	61	Rochelle, J-13.....	175
River Joseph, H-6.....	92	Rocher-de-la-Chapelle, Montmagny.	
River St. Francis, Drummond and Arthabaska.		Rocher Noir, Montmagny.	
Rivière à Claude, B-5.....	100	Rochon, Wright.	
Rivière à la Martre, B-5 †.....	143	Rochon, Road, (Rv 16) ¶ 4 m N W	
Rivière à l'Ours, C-15.....	23	Three Rivers, H-12.	
Rivière à Pierre, * † see Rivière à Pierre Junction, F-13.....	110	Rockaven, (Ry 16) ¶ 11 m S Maniwaki, H-6.	
Rivière à Pierre Junction, F-13, (Rys 14, 122) ¶ ≅.....	860	Rockburn, J-9 *.....	76
Rivière au Doré, Chicoutimi.....	27	Rockfield, Hochelaga, (Ry 65) ¶ † §	
Rivière au Rat, F-12.....	46	Rock Forest, J-14, (Ry 16).....	50
Rivière aux Chiens, 1 m N E Chateau Richer, G-15.....	90	Rockhurst, Ottawa, (Ry 16) ¶	
Rivière aux Graines, Saguenay †		Rock Island, J-13, (Ry 12) * † ‡.....	615
Rivière aux Pins, G-14.		Rockland, Labelle ¶ ●	
Rivière Baulé, Terrebonne.		Rockway Valley, I-8.....	45
Rivière Blanche Portneuf, Portneuf, G-13.		Rocque Brune, Vandreuil.	
Rivière Bleue, Temiscouata.		Rose Bridge, Gaspé.	
Rivière Bois Clair, G-14 *.....	200	Rosemere, I-7, (Ry 16) ⊕	
Rivière des Chiens, (Ry 114) ¶ 3 m S W Ste. Anne de Beaupré, F-15.		Rosenberg, Missisquoi.	
Rivière des Fèves, Chateauguay....	93	Ross, (Ry 16) ¶ 4 m W Bury, J-15.	
Rivière des Hurons, Rouville.		Rougemont, J-12, (Rys 28, 120) ¶ † Δ § ⊕ □	160
Rivière des Plantes, Beauce.....	58	Rougemont Station * see Rougemont, J-12.....	160
Rivière des Prairies, I-11.....	481	Rouge Valley, I-8.	
Rivière des Prairie Ouest, Laval.		Rousseau's Mills, G-13, (Ry 14) ≅ ..	47
Rivière-des-Roches, Montmorency.		Roussillon, Argenteuil.	
Rivière du Fer, (Ry 114) ¶		Routhier, G-7, (Ry 16) ¶ † ⊕	
Rivière du Loup (en bas), E-18, (Rys 67, 141) * † § ● (Paroisse 659)....	4569	Rowantou, Pontiac.....	25
Rivière du Loup Station, E-18 * †		Roxham, J-11.....	50
Rivière du Loup Wharf, Temiscouata † (Summer P. O.)		Roxton, East, J-13.....	63
Rivière du Moulin, Chicoutimi.....	110	Roxton Falls, I-12, (Ry 16) * † ⊕.....	818
Rivière Famine, Beauce.....	23	Roxton Pond, J-12 *.....	252
Rivière Gagnon, I-9.....	22	Royville, Bagot.	
Rivière Gentilly, Nicolet, (Ry 120) ..	91	Ruisseau à l'Eau Chande, H-16.....	52
Rivière Jaune, Quebec.		Ruisseau à Sem, Rimouski.....	54
Rivière la Fleur, G-16.....	100	Ruisseau Castor, Gaspé	
Rivière la Madeleine, B-6.....	54	Ruisseau, Desnoyer, Laprairie and Napierville.	
Rivière Mailloux, Charlevoix.....	58	Ruisseau des Anges, L'Assomption.	
Rivière Mattawin, G-12.....	32	Ruisseau des Olives, Gaspé.	
Rivière Mekinac, G-12.		Ruisseau Le Blanc, Bonaventure....	170
Rivière Noire, H-13 †.....	35	Ruisseau Plat, Maskinongé.	
Rivière Onelle, F-17 *.....	1608	Ruisseau St. Georges, Montcalm.	
Rivière Onelle Jonctiôn, Kamouraska, (Ry 67).		Ruiter's Mill, (Ry 16) ¶ 5 m S Knowlton, J-13.	
Rivière Onelle Station, F-18, (Ry 67) ¶ † §		Runnymede, D-3.....	30
Rivière Onelle Wharf, F-18, (Ry 67) ¶ † §		Rumpelville, Mégantic.	
Rivière Rouge, J-9, (Ry 65) ¶		Rupert, I-6 *.....	86
		Russelltown, J-10.....	69
		Rutledge, Pontiac.....	33
		Ryanville, Wright.	

Towns, etc.—continued.	Pop.
Sabrevois, J-11, (Ry 120) * + ∅	200
Sacré Cœur, D-20, (Ry 67) ¶ + §	78
Sacré Cœur de Jésus, Beauce ¶	208
Sacré Cœur de Marie, H-15	108
Saints Anges, H-16	450
Saints Anges de Lachine, Jacques Cartier ¶	700
Salaberry, Megantic.	
Salaberry de Valleyfield ¶ see Valleyfield, J-9	11055
Salmon Bay, Saguenay	61
Salvail, St. Hyacinthe.	
Samson, (Ry 122) ¶ ≅	
Sanborn, I-14	40
Sand Hill, J-14.	
Sandy Bay * see Macnider, C-2	196
Sandy Beach, C-8 ¶ †	25
Sandy Beach Centre, Gaspé.	
Sandy River, Chicoutimi and Saguenay ¶	62
Sans Bruit, Quebec East *	
Saragayville, Jacques Cartier.	
Sault à la Puce, Montmorency.	
Sault au Mouton, Saguenay †	
Sault au Cochon, C-9 ¶	175
Sault au Récollet, Laval *	1588
Sault St. Lin, L'Assomption.	
Savage's Mills, J-13, (Ry 16)	150
Savard's Portage, D-18 ¶	
Savoie, Mégantic.	
Sawyerville, J-14, (Ry 71) * † ‡	428
Sayabec, C-2 * †	289
Sayabec Station, C-2, (Ry 67) * §	150
Schwartz, Pontiac.	
Schyan, Pontiac.	
Scotch Road, Argenteuil.	
Scotch Weedon, Compton.	
Scotstown, I-15, (Ry 16) * † ∅	791
Scott Junction, Beauce *	384
Scotts, H-15, (Ry 118) ¶ † ‡	
Scottsmore, 2 m SE Sweetsburgh, J-12.	
Seal Cove, C-8	203
Sellarville, Bonaventure	35
Senneville, Jacques Cartier ¶	293
Settrington, E-17 ¶	
Seven Islands, Saguenay *	198
Shanks, (Ry 16) ¶ 5 m N W Rock Forest, J-14.	
Shannon, Portneuf.	
Shawbridge, I-9, (Rys 14, 16) * † ∅	225
Shawinigan, H-12, *	250
Shawinigan Falls, G-12, (Rys 14, 16) * † Δ ≅ ∅ □	2730
Shawinigan Junction, H-12, (Ry 14) † ≅	
Shawville, I-5, (Ry 16) * † ∅	648
Sheenborough, I-3 *	58
Sheffington, Shefford	60
Shefford Mountain, J-12	260
Shefford Vale, J-12	56
Sheldrake, 113 m from Gaspé Basin, C-8 †	150
Shenley Est, Beauce.	
Sherbrooke, J-14, (Rys 12, 16, 65, 118) * † Δ ‡ § ∅ □	11765
Sherbrooke Junction, (Ry 16) ¶ 1 m S Sherbrooke, J-14.	
Sherrington, J-11, (Ry 65) *	245
Shigawake, D-7, (Ry 1) †	180
Shipshaw, Chicoutimi †	

Towns, etc.—continued.	Pop
Shrewsbury, I-9.	
Signal, Chicoutimi.	
Sillery, Quebec *	2334
Sillery Cove, G-15 ¶	450
Silver Creek, I-7 ¶	40
Simard, Chicoutimi.	
Simmons, Wright.	
Six Portages, H-6	53
Sixteen Island Lake, Argenteuil, (Ry 14) ∅	
Slatington, Richmond.	
Smith's Corners, Pontiac.	
Smith's Mills, J-13, (Ry 12) * † ‡	61
Snake Creek, J-19, (Ry 16) ¶	
Sorel, H-11, (Ry 120) * † Δ § ∅ □ ●	7057
Soulanges, (Ry 65) ¶ 2 m E Coteau Junction, J-9.	
Soucy, Yamaska.	
South Barnston, J-14	40
South Beach, Gaspé	60
South Bolton, J-13, (Ry 16) * ∅	91
South Dudswell, J-14	30
South Durham, I-13, (Ry 65) * † §	500
South Ely, J-13	36
South Granby, J-12	25
South Ham, I-14	106
South Junction, (Ry 16) ¶ 3 m N Adirondack Junction, J-10.	
South Quebec, Levis * †	
South River, (Ry 120) ¶ 3 m S Henryville, J 11.	
South Roxton, J-12, (Ry 16) * † ∅	100
South Sherbrooke, Sherbrooke *	
South Stukely, J-13, (Ry 16) * ∅	300
South-West Point, B-10 †	
Springbrook, H-16	25
Spring Hill, I-16, (Ry 16) † ∅	85
Spring Road, Sherbrooke.	
Spruce, (Ry 16) ¶ 15 m W Megantic, I-16.	
St. Abdon, H-17.	
St. Adalbert, L'Islet.	
Ste. Adelaide, C-8 ¶	
Ste. Adelaide de Pabos, Gaspé * †	1905
Ste. Adèle, I-9, (Ry 16) * † ∅	1546
St. Adelphe de Champlain, G-13 *	750
St. Adolphe de Dudswell, I-14 *	615
St. Adolphe de Howard, I-9	43
St. Adrien, I-14	654
St. Agapit, G-15, (Ry 65) * † §	1094
St. Agapit Station, Lotbinière	894
Ste. Agathe de Lotbinière, H-15 *	224
Ste. Agathe des Monts, H-9, (Ry 16) * † ∅	1679
Ste. Agathe East, Lotbinière.	
Ste. Agnes, K-8, (Ry 65) ¶	954
Ste. Agnès de Charlevoix, E-17 †	1588
Ste. Agnès de Dundee, see Ste. Agnes, K-8	
St. Agricole, H-9.	
St. Ailare, du Lac St. Jean, Chicoutimi.	
St. Aimé, I-12, (Ry 120) * † ∅	1967
St. Alban, G-13 *	1984
St. Albert, H-13	60
St. Alcide de Ham, Richmond and Wolf.	
St. Alexander Station, J-11, (Ry 28) ‡	75
St. Alexandre, E-18, (Ry 67) ¶ ‡ §	650
St. Alexandre d' Iberville, J-11 *	1608
St. Alexandre de Kamouraska, Kamouraska * †	1760

<i>Towns, etc.—continued.</i>	Pop.	<i>Towns, etc.—continued.</i>	Pop.
St. Alexis, (Ry 67) † 5 m N W Mata- pedia, D-3	127	St. Antoine, St. Hyacinthe ¶	82
St Alexis ¶ † see Grande Bale, D-16	534	St. Antoine de Charlevoix, Charlevoix.	
St. Alexis, (Ry 14) ¶ ≅ 2 m N E Ste. Julienne, I-10.		St. Antoine de Perkins, Wright ¶ ...	103
St. Alexis de Montcalm, I-10	1152	St. Antoine River Richelieu, I-11 *.	1464
St. Alexis des Monts, H-11 *	1496	St. Antonin, E-19	1190
St. Alexis Nord, Montcalm.		St. Apollinaire, G-14, (Ry 67) * † § ..	1402
St. Alexis Station, Bonaventure.		St. Apolline de Patton, Montmagny.	40
St. Alphonse, Chicoutimi, ¶ ●		St. Armand, J-12 ¶ †	926
St. Alphonse, H-10 †	960	St. Armand Centre, J-12	100
St. Alphonse de Caplan, Bonaventure.		St. Armand Station, J-12, (Ry 28) * †	1039
St. Alphonse de Granby, J-12	94	St. Arsène, E-19, (Ry 67) * † §	1093
St. Ambroise ¶ † see Lorette, G-15.	1712	St. Athanase ¶ † see Iberville, J-11	2276
St. Ambroise, Summit ¶	4270	St. Aubert, F-17 *	1409
St. Amédée, Labelle	650	St. Augustin, Portneuf, G-15, (Ry 14)	
St. Anaclet, D-21, (Ry 67) * † § ..	928	* † ≅	1385
Ste. Anastasie, Mégantic *	1464	St. Augustin Saguenay, I-10, (Ry	
St. André, E-18, (Ry 67) ¶ † §	827	16) † ∅	167
St. André Avellin, I-7 *	2928	St. Augustin, Two Mountains, Two	
St. André de Kamouraska, E-18 * †	1316	Mountains * †	167
St. André de Restigouche, Bonaven- ture.		Ste. Barbe, J-9	578
St. André Junction, (Ry 122) ¶ ≅ 1 m S Lake Bouchette, D-13.		St. Barnabé, River Yamaska, I-12	913
St. André Station, Kamouraska.		St. Barnabé, H-12, (Ry 20) ¶ † ∅	400
St. Andrews, East, I-9 *	1540	St. Barnabé, St. Maurice, Three	
Ste. Angèle, J-11, (Rys 28, 120) ¶		Rivers and St. Maurice *	2291
△ § ∅ □	954	St. Barthélemi, H-11, (Rys 14, 16) *	
Ste. Angèle de Laval * † 2 m E Three Rivers, H-12	1051	≅ ∅	643
Ste. Angèle de Monnoir * † see St. An- gele, J-11	954	St. Barthélemi Station, Berthier	2532
Ste. Angèle de Rimouski, Rimouski *	1361	St. Bazile de Portneuf, G-14 *	1722
St. Angélique, Labelle ¶	928	St. Bazile le Grand, I-11, (Ry 65) † ..	690
Sts. Anges, Beauce ¶	954	St. Bazile Station, G-14, (Ry 16) § ∅	
St. Anicet, J-9	2093	Ste. Beatrix, H-10	25
St. Ann, I-4 ¶		St Benjamin, Dorchester	63
Ste. Anne, Rimouski ¶	200	St. Benoit, Rimouski ¶	650
Ste. Anne, F-18, (Ry 67) ¶ §	1689	St. Benoit, Two Mountains *	1315
Ste. Anne's, J-10, (Rys 16, 65) ¶ ●	1728	St. Benoit de Matapedia, Bonaventure.	
Ste. Anne, (Ry 16) ¶ see Ste. Anne des Plaines, I-10.		St. Benoit Labre, I-9 *	1005
Ste. Anne Church, (Ry 114) ¶ 1 m S		St. Bernard, (Sud) J-11	2361
Ste. Anne de Beaupré, F-16.		St. Bernard de Dorchester, H-15 * ..	1436
Ste. Anne de Beaupre, F-16, (Ry 114)		St. Blaise, see Grande Ligne, J-11 ..	83
* †	1934	Ste. Blandine, D-21	844
Ste. Anne de Bellevue, * † △ § ∅ □		St. Bonaventure, I-12 *	1265
see Ste. Anne's, J-10	1684	St. Boniface, (Ry 14) ¶ † ≅ 4 m N E	
Ste. Anne de la Pérade, G-13 * † ..	2550	Burrill, G-12	416
Ste. Anne de la Pocatière, F-17 * † ..	2434	St. Boniface Mill (Ry 14) ¶ ≅ 5 m N	
Ste. Anne de la Pocatière Station, Kamouraska.		E Charette Mill, G-12.	
Ste. Anne de Restigouche, D-4 ¶	879	Ste. Brigide d' Iberville, Iberville * ..	1545
Ste. Anne des Monts, B-4 * †	2269	Ste. Brigide Road, J-12, (Ry 28) ¶ ..	125
Ste. Anne de Sabrevois, St. John's and Iberville ¶	133	Ste. Brigide Station, J-11, (Rys 16,	
Ste. Anne de Sorel, H-11	1122	28) §	657
Ste. Anne des Plaines, I-10 *	1728	Ste. Brigitte, Montmorency ¶	80
Ste. Anne Labrador, Sanguenay ¶ ..	516	Ste. Brigitte des Saults, H-13 *	907
Ste. Anne ¶ see Tremblay, D-15	516	St. Bruno * † 2 m N St. Bruno Sta- tion, I-11	872
Ste. Anne du Bout de l'Isle, Jacques Cartier ¶	347	St. Bruno de Kamouraska, F-18 ..	711
St. Anselme, G-16, (Ry 118) * † ‡ ..	2049	St. Bruno, (Ry 118) ¶ 11 m N St. Mary, H-16	1025
St. Antoine, I-10 ¶		St. Bruno, Lac St. Jean	1025
St. Antoine, I-11, (Ry 120) ¶	1485	St. Bruno Station, I-11, (Ry 65) §	
St. Antoine, Lotbinière, G-14 *	1406	St. Cajetan, Bellechasse ¶	1741
St. Antoine Abbé ¶ see Starnesborough, J-10	525	St. Calixte de Kilkenny, I-10	725
St. Antoine, Montmagny ¶	108	St. Camille, I-14 *	681
		Ste. Camille de Bellechasse, Belle- chasse.	
		St. Canute, I-9, (Ry 14) * ≅	651
		St. Casimir, G-13, (Ry 14) * ≅	2456
		St. Cassien des Caps, F-16 †	530
		Ste. Catherine, G-14, (Ry 122) * ≅ ..	1137
		St. Catharines Bay, Saguenay * †	
		St. Catherine Station, Portneuf.	
		Ste. Cécile, Rimouski ¶ †	1300

<i>Towns, etc.—continued.</i>	Pop.	<i>Towns, etc.—continued.</i>	Pop.
Ste. Cécile de Levrard, H-13.....	814	St. Dominique, Chicoutimi and Sa-	
Ste. Cécile de Masham, Wright *.....	80	guenay †	1630
Ste. Cécile de Milton, Shefford.....	100	St. Dominique de Bagot, I-12.....	1552
Ste. Cécile de Whitton, I-16, (Ry 118) †	973	St. Dominique des Cèdres, Sou-	
Ste. Cécile Station, Compton.....		langes † †	774
St. Célestin, H-13, (Ry 65) *.....	1320	St. Dominique Station, J-10, (Ry	
St. Célestin Station, Nicolet.....		65) \$.....	80
St. Césaire, J-12, (Ry 28) * † \$.....	2311	St. Donat, C-21 *.....	845
St. Charles, H-13, (Ry 120) † †		St. Donat de Montcalm, H-9 *.....	931
St. Charles, Joliette †	50	St. Dorothée, I-10.....	881
St. Charles de Bellechasse, Belle-		St. Dorothée Est, Laval.....	
chasse *.....	810	St. Edmond de Berthier, Berthier... 593	
St. Charles de Caplan, D-6 *.....	1990	St. Edmond, Quebec †	871
St. Charles de Levrard, Nicolet.....		St. Edouard de Frampton, H-16.....	1935
St. Charles de Montcalm, Montcalm.....		St. Edouard de Napierville, J-11, (Ry	
St. Charles Junction, G-16, (Ry 67)		97) ∅.....	1105
† \$.....	2085	St. Edward, I-12, (Ry 67) †	491
St. Charles, River Boyer, G-16 †	810	St. Edwidge, J-14.....	930
St. Charles, River Richelieu, I-11 *.....	1623	St. Eleuthère, F-19 *.....	746
Ste. Christine, I-13.....	627	St. Elie, H-12.....	1376
St. Christophe † near Arthabaska,		St. Elizabeth, H-10, (Ry 14) * † ≅.....	239
H-14.....	100	St. Elizabeth de Warwick, Artha-	
St. Chrysostôme, J-10 *.....	575	baska.....	429
St. Claire, H-16 *.....	1758	St. Eloi, D-19, (Ry 67) * † \$.....	870
St. Claude, Richmond.....	51	St. Eloi Station, Témiscouata.....	
St. Claude, (Ry 16) † 3 m E St. Phil-		St. Elphège, H-12 †	720
lippe, J-11.....		St. Elzéar, H-15 †	201
St. Claud Nord, Richmond.....		St. Elzéar de Beauce, Beauce *.....	1235
St. Clément, Beauharnois †	1549	St. Elzéar de Ham, Wolfe.....	
St. Clément, E-19 *.....	62	St. Elzéar de Laval, Laval *.....	62
St. Cléophas de Brandon, (Ry 16)		St. Emélie, (Ry 16) † † 6 m N Joliette,	
6 m N St. Félix de Valois, H-11.....	40	I-10.....	
St. Clet, J-9, (Ry 16) * † ∅.....	930	St. Emélie de L'Energie, H-10 *.....	1201
Ste. Clothide, I-14 *.....	1286	St. Emélie de Lotbinière, Lotbinière *	
St. Clothilde de Châteauguay, J-10.....	851	St. Emélie Junction, Joliette.....	
St. Colomb de Sillery, Quebec †	2069	St. Emile de Montcalm, Montcalm... 464	
St. Columbin, I-9.....	324	St. Emile de Suffolk, Labelle *... 740	
Ste. Côte, H-10.....	1031	St. Ephrem de Tring, H-16, (Ry 118)	
St. Côte de Kennebec † see Linière.		* †	2844
H-16.....	1339	St. Ephrem Station, Beauce †	70
St. Constant, J-10, (Rys 16, 65) * †		St. Epiphane † see Viger, E-19.....	276
Δ ∅ < □.....	1525	St. Esprit, I-10 *.....	1392
St. Constant Junction, (Rys 16, 97) †		St. Etienne de Beauharnois, J-10... 873	
1 m N St. Constant, J-10.....		St. Etienne de Beaumont, Bellechasse	
St. Croix, G-14 *.....	2136	†	716
Ste. Cunégonde * ∅ 1 m W Mon-		St. Etienne de Bolton, J-13.....	740
treuil, I-10.....	10912	St. Etienne des Grès, H-12 *.....	1741
St. Cuthbert, H-11, (Ry 14) * ≅.....	3055	St. Etienne du Saguenay, D-18	
St. Cuthbert Station, H-11, (Ry 16) † ∅.....	25	†	703
St. Cyrien, E-19 †	1430	St. Eugène, I-12, (Ry 67) †	714
St. Cyr, I-13, (Ry 65).....	820	St. Eugène de Grantham, I-12 † \$.....	824
St. Cyriac, D-15.....	713	St. Eugène de Guignes, Pontiac.....	
St. Cyrille de L'Islet, F-17 *.....	1656	St. Eulalie, H-13 *.....	1250
St. Cyrille de Wendover, I-13, (Ry		St. Eulalie Sta., H-13, (Ry 65) †	70
67) * † \$.....	2247	St. Eusèbe, E-20 *.....	640
St. Damase, I-11, (Ry 120) † ∅.....	803	St. Eustache, I-10, (Ry 16) * ∅.....	2774
St. Damase de Rimouski, Rimouski * 896		St. Evariste de Forsyth, I-16, (Ry 118)	
St. Damase des Aulnaies, F-17.....	915	* †	2030
St. Damase de Theford, Megantic.....		St. Evariste Station, Beauce *.....	145
St. Damien de Brandon, H-10 *... 1194		St. Fabien, D-20, (Ry 67) * † \$.....	1949
St. Damien de Buckland, G-16 *.....	1174	St. Famille, G-16 * †	751
St. David, I-12 †		St. Famille de Demeules, Chicoutimi.....	
St. David de Lévis, Lévis.....	718	St. Faustin, H 8, (Ry 16) * † ∅.....	1283
St. David d' Yamaska, Yamaska I-12		St. Faustine Station, Terrebonne.....	
* †	718	St. Félicien, C-13 *.....	1386
St. Denis de la Boutellerie, E-18 *... 814		St. Félicité, C-2 * †	810
St. Denis, River Richelieu, I-11 *... 700		St. Félix, Quebec †	631
St. Désiré du Lac Noir, see Black		St. Félix de Kingsey, Drummond *	
Lake, H-15.....	1266	St. Félix de Valois, H 11, (Ry 16)	
St. Didace, H-11 *.....	175	* † ∅.....	2130

<i>Towns, etc.—continued.</i>	Pop.	<i>Towns, etc.—continued.</i>	Pop.
St. Ferdinand, H-14 *	721	St. Guillaume Station, Yamaska †	100
St. Féréol, F-16	75	St. Hector de Bagot, Bagot.	
St. Fidèle, E-18 †	1150	Ste. Hélène, E-18, (Ry 67) ¶ §	1268
Ste. Flavie, C-21	1147	Ste. Hélène de Bagot, I-12, (Ry 67) * †	1268
Ste. Flavie Station, C-21, (Ry 67)		Ste. Hélène de Chester, H-14	780
* † §	125	Ste. Hélène de Kamouraska, Kamouraska * †	1286
St. Flavien, H-14 *	9403	St. Helier, Gaspé.	
Ste. Flore, G-12 *	3144	Ste. Hénédiine, G-16, (Ry 118) * † ‡	1075
Ste. Florence, Rimouski.		St. Henri, (Ry 67) ¶ † see St. Henri Station, G-15.	
St. Fortunat, I-14 *	713	St. Henri de Lévis, Lévis * †	2180
St. Foy * 5 m S W Quebec, G-15	1066	St. Henri de Montreal, (City of Montreal) J-10, (Rys 16, 65) * †	21192
St. Francis, H-16 ¶	350	‡ Δ § ☉ < □	21192
St. Francis, Champlain ¶	450	St. Henri Junction, G-15, (Rys 16, 118) ¶ †	85
St. François, G-16, (Ry 67) ¶	1213	St. Henri Station, G-15, ¶	100
St. François d'Assise, Bonaventure.		St. Hermas, I-9 *	1126
St. François de Sales Station, I-10,	857	St. Hermas Station, Two Mountains, (Ry 16) † ☉	1126
St. François d'Orléans, G-16 †	496	St. Herméngilde, J-14 * †	890
St. François du Lac, I-12, (Ry 120)		St. Hilaire de Dorset, Beauce.	
* † §	590	St. Hilaire du Lac St. Jean, Chicoutimi	45
Ste. Française, D-19	840	St. Hilaire, East, I-11, (Ry 65) ¶ †	
St. François, G-16 * † §	1624	St. Hilaire Station, I-11 (Ry 65) * §	160
St. François North East, Beauce ¶ †	1609	St. Hilaire Village, I-11 *	1275
St. François Xavier de Brompton, J-14	1407	St. Hilarion, Charlevoix * †	1035
St. François Xavier de Viger, E-19	25	St. Hilarion du Lac, Charlevoix.	
St. Frédéric, Beauce *	1802	St. Hippolyte de Kilkenny, I-9	900
St. Fulgence ¶ † see L'Anse au Foin, D-16	329	St. Honoré, E-19, (Ry 141) ¶ §	453
St. Gabriel de Brandon, H-11, (Ry 16) * † ☉	2154	St. Honoré, I-16 * †	1844
St. Gabriel de Rimouski, Rimouski	65	St. Hubert, Temiscouata ¶	92
St. Gabriel Station, G-14, *	200	St. Hubert, J-11, (Rys 28, 65) * † §	963
St. Gédéon, D-14, (Ry 122) * † ≅	1155	St. Hubert Station, Chambly and Vercheres	
St. Gédéon de Beauce, Beauce *	47	St. Hugues, I-12, (Ry 16) * † ☉	1799
Ste. Geneviève J-10 ¶	735	St. Hyacinthe, I-12, (Rys 65, 67, 120) * † Δ § ☉ □	9883
Ste. Geneviève de Batiscan * †	1814	St. Hyacinthe Junction, (Ry 120) ¶ 4 m N St. Hyacinthe, I-12.	
St. Geneviève de Pierrefonds, Jacques Cartier.		St. Hyacinthe Station, I-12, (Ry 16) ¶ †	
St. George, H-16, (Ry 118) ¶ † ‡		St. Ignace, Soulanges ¶	892
St. George, Beauce, H-16 * †	3287	St. Ignace de Loyola, Berthier	935
St. George, (Ry 14) ¶ ≅ 5 m S E St. Jacques, I-10.		St. Ignace de Québec, Québec.	
St. George, (Ry 67) ¶ 3 m N E Ste. Rosalie, I-12.		St. Ignace du Lac, Maskinongé.	
St. George, St. John's and Iberville ¶	318	St. Irénée, E-17 * †	1059
St. George de Malbay, Gaspé	714	St. Irénée-les-Bains, Charlevoix, (Summer P. O.)	
St. George de Windsor, I-14 *	1340	St. Isidore, Dorchester, H-15 *	1706
St. George, East, H-16 *	375	St. Isidore, Laprairie, J-10, (Ry 65) * † §	1654
St. Gerard d'Yamaska, Yamaska.		St. Isidore de Gaspé, Gaspé.	
St. Germain, (Ry 118) ¶ †		St. Isidore Junction, J-10, (Ry 65) † Δ § < □	112
St. Germain de Grantham, I-12, (Ry 67) * † §	2573	St. Jacques, I-10, (Ry 14) * ≅	1400
St. Germain de Kamouraska, E-18 * †	567	St. Jacques Junction, I-11 (Ry 14) ¶ ≅	
Ste. Gertrude, H-13 *	1891	St. Jacques le Mineur, J-11 *	900
St. Gervais, G-16 *	1936	St. Jacques Nord, Montcalm.	
St. Gilbert, 1½ m from Deschambault, G-13	100	St. Janvier, I-10, (Ry 16) * † ☉	1016
St. Giles, H-15 *	800	St. Jean, St. John's and Iberville. *	4030
St. Godfroy, D-7, (Ry 1) †	411	St. Jean Baptiste, Portneuf ¶	160
St. Grégoire, H-12 *	1222	St. Jean Baptiste de Montreal, (City of Montreal) * 1 m N W Montreal, I-10.	
St. Gregoire, Quebec, (Ry 114) ¶	1504	St. Jean Baptiste de Rouville, I-11	241
St. Gregoire, (Ry 16) ¶ 2½ m W Versailles, J-11.		St. Jean Chrysostome de Lévis, G-15, (Ry 67)	1757
St. Gregoire Station, H-13, (Rys 65, 120, 121) ¶ † §	1707	St. Jean de Dieu, D-19 *	1357
St. Gregoire West, (Ry 114) ¶ 1 m S W St. Gregoire Sta., G-15.			
St. Guillaume d'Upton, I-12, (Ry 16) * ☉	2778		

Towns, etc.—continued.	Pop.
St. Jean de la Croix, Maisonneuve.	
St. Jean de Matha, H-10 * †	1958
St. Jean des Piles, Champlain *	554
St. Jean d'Orléans, G-16 * †	1137
St. Jean l'Évangéliste, D-5 *	674
St. Jeanne, Portneuf † see Pont Rouge, G-14.	489
St. Jeanne de L'Isle Perrot † see Isle Perrot, J-10	415
St. Jean Port Joli, F-17 * §	2261
St. Jean Port Joli Station, F-17, (Ry 67) †	2261
St. Jérôme, I-9, (Rys 14, 16) * † Δ ≅	3316
St. Jérôme Lake St. John †	498
St. Jérôme de Matane, Rimouski †	1179
St. Jérôme Junction, (Ry 14) ≅ 1 m N E St. Jerome, I-9.	
St. Joachim de Berthier, Berthier.	
St. Joachim de Courval, Yamaska.	
St. Joachim de la Pointe Claire † see Pointe Claire, J-10.	555
St. Joachim de Montmorency, F-16, (Ry 114) * †	853
St. Joachim de Shefford, J-13.	1126
St. Johns, J-11, (Rys 16, 28, 65) † † Δ † § † < □	4030
St. Joseph, G-15, (Ry 67) †	401
St. Joseph, Soulanges †	309
St. Joseph, St. Hyacinthe †	352
St. Joseph d'Alma, C-14 *	1305
St. Joseph de Beauce, H-16, (Ry 118) * † †	3297
St. Joseph de Bordeaux † see Bordeaux, J-11	491
St. Joseph de Lepage, C-21.	730
St. Joseph de Lévis, G-15 †	401
St. Joseph de Maskinongé, Maskinongé †	436
St. Joseph de Mékinak, G-12.	430
St. Joseph de Nicolet, Nicolet.	
St. Joseph de Sorel, H-11.	1257
St. Joseph de St. Hyacinthe, St. Hyacinthe * Δ † □	
St. Joseph du Lac, J-9 †	1091
St. Jovite, H-8, (Ry 16) * † †	1752
St. Jovite Station, Terrebonne.	
St. Jude, I-12, (Ry 120) * † †	1589
St. Julie de Somerset, H-14 † †	1420
St. Julie de Verchères, I-11 *	1354
St. Julienne, I-10, (Ry 14) * ≅	1289
St. Julienne Station, Montcalm †	
St. Julie Station, H 14, (Ry 65) §	138
St. Justin, H 11, (Ry 14) * † ≅	1619
St. Justine, (Ry 118) † † †	
St. Justine de Newton, J-9 * † §	1472
St. Justine Station, J-9, (Ry 65) * †	959
St. Lambert, G-15 † †	1280
St. Lambert de Lévis, * see St. Lambert, G-15.	1230
St. Lambert, J-11, (Rys 28, 65, 120) * Δ § < □	1362
St. Laurent, I-10 †	3741
St. Laurent d'Orléans, G-16 * †	797
St. Laurent, Montreal, Jacques Cartier * †	
St. Lazare de Bellechasse, G-16 *	1287
St. Lazare de Vaudreuil, J-9 †	1411
St. Lazare Station, J-9, (Ry 16) †	
St. Léandre, Rimouski.	

Towns, etc.—continued.	Pop.
St. Léon, H-12 *	1653
St. Léon, Dorchester †	165
St. Léon de Stanton, J-9 †	1674
St. Léonard d'Aston, Nicolet * ..	1404
St. Léonard de Chicoutimi, Chicoutimi †	26
St. Léonard de Port Maurice, Laval.	119
St. Léonard de Portneuf, Portneuf, (Ry 122) * ≅	150
St. Léonard Junction, H-13, (Ry 67) † † §	
St. Léon le Grand, Rimouski.	
St. Liboire, I-12, (Ry 65) † §	1739
St. Liguori, I-10.	1242
St. Lin, I-10, (Ry 16) † †	1664
St. Lin Junction, I-10, (Ry 16) †	100
St. Lin Station, I-10, (Ry 14) † ≅	934
St. Louis, I-11, (Ry 120) † †	
St. Louis, Chicoutimi and Saguenay †	287
St. Louis, J-10, (Ry 65) †	
St. Louis, Lotbinière †	458
St. Louis de Beauce, Beauce †	
St. Louis de Blandford, H-13 †	440
St. Louis de Bonsecours, Richelieu †	828
St. Louis de Champlain, Champlain.	
St. Louis de Gonzague * † see St. Louis, J-10.	2039
St. Louis de Ha-Ha, E-19, (Ry 141) * §	1640
St. Louis Nazaire, Chicoutimi.	
St. Louis of Mile End † † see Mile End, I-10	10933
St. Louise, F-17, (Ry 67) * † §	1280
St. Louis Station, Beauharnois † §	90
St. Luc, St. John's and Iberville.	717
St. Luc † 4 m from Champlain, H-13.	88
St. Luc de Matane, Rimouski	90
St. Luce, C-21 †	1480
St. Luce Station, C-20, (Ry 67) * §	50
St. Lucie de Doncaster, H-9 *	874
St. Lucien, Drummond.	
St. Luc Junction, J-10, (Ry 16) † †	
St. Ludger, Beauce *	377
St. Madeleine, I-11, (Ry 65) * † §	200
St. Madeleine Station, J-12, (Ry 120) †	
St. Magloire, G-17 *	1367
St. Majoric, Drummond.	
St. Malachie, G-16 *	1674
St. Malachie, Chateauguay †	150
St. Malo, J-14 †	840
St. Malo, (Ry 16) † † 4 m N E Piles Junction, H-12.	
St. Malo Station, J-14, (Ry 71) †	
St. Mare (Ry 14) † † 3 m S Lachevrotiere, G-13	
St. Marc, I-11 * ≅	968
St. Marcel, I-12 †	942
St. Marcel de L'Islet, L'Islet.	411
St. Marcel de Richelieu, Richelieu ..	150
St. Marcellin, Rimouski.	
St. Margaret, H-9, (Ry 16) † † †	100
St. Marguerite, H-16 †	808
St. Marguerite Bay-Mill, Saguenay †	
St. Marguerite de Dorchester, Dorchester *	1088
St. Marguerite Station, see St. Margaret, H-9.	100
St. Marie, Beauce, * 4 m S Scotts Junction, H-16.	2539
St. Marie Champlain †	305
St. Marie de Blandford, Nicolet	476

<i>Towns, etc.—continued.</i>	Pop.	<i>Towns, etc.—continued.</i>	Pop.
Ste. Marie de Charlevoix, Charlevoix.		St. Patrick, E-18.....	1410
Ste. Marie de Sayabec, Rimouski ¶.	300	St. Patrick's Hill, I-14 ¶	770
St. Marie de Monnoir ¶ † see Marieville. J-11.....	1054	St. Paul, I-11 (Ry 65) † §	840
Ste. Marie de Ste. Marthe, Vandreuil.		St. Paul, St. John and Iberville ¶	90
Ste. Marie Salomé, I-11, (Ry 14) ≈	704	St. Paul d'Abbottford, Rouville ¶	250
Ste. Marthe, J-9 *.....	1404	St. Paul de Chester, Arthabaska *	160
St. Martin, I-10 *.....	3170	St. Paul de la Croix, E-19.....	838
St. Martin ¶ see Bolduc, I-16.....	225	St. Paul d'Industrie, Joliette.....	1470
Ste. Martine, J-10 * † §	300	St. Paul du Buton, G-17 *.....	943
Ste. Martine Junction, (Ry 65) see ¶		St. Paul Est, Montmagny.	
Ste. Martine, J-10.....	20	St. Paulin, H-11, (Ry 14) * † ≈	1244
St. Martin Station, I-10, (Ry 16) ¶		St. Paul l'Ermite, I-11 (Ry 14) * ≈	1588
St. Mary, H-16, (Ry 118) ¶ †		Ste. Perpétue, H-13.....	676
St. Mary's of Ely, Sheford.		Ste. Perpétue Station, I-13, (Ry 67) ¶	
St. Mathias, J-11.....	657	St. Pétronille de Beaulieu ¶ see	
St. Mathieu, D-20.....	540	Beaulieu, G-15.....	220
St. Maurice, G-12, (Ry 16) * ∅.....	2210	St. Philémon, Bellechasse *	
St. Maurice Forges, H-12 ¶	30	St. Philippe d'Argenteuil, I-9, (Ry 14)	
St. Maxime, (Ry 118) 2 m N Scotts,		* ≈	124
H-15.....	756	St. Philippe de Chester, I-14.....	740
Ste. Mélanie, H-10.....	1110	St. Philippe de Laprairie, J-11, (Ry	
St. Méthode, C-14 ¶.....	437	16) * † ∅	1707
St. Michael, I-5 ¶		St. Philippe de Néry, F-18, (Ry 67)	
St. Michel, Chicoutimi and Saguenay ¶	916	* † §.....	966
St. Michel, (Ry 122) ¶ ≈ 1 m W Lorette		St. Philomène, J-10, (Ry 65) *	1080
Jct., G-14.....		St. Philomène, H-14, (Rys 70, 120) ¶	275
St. Michel, Yamaska ¶.....	762	Ste. Philomène ¶ see Lafayette,	
St. Michel de Bellechasse, G-16, (Ry		G-17.....	158
67) * §.....	1722	St. Philomène de Mailloux, Belle-	
St. Michel de Napierville, J-10, (Ry		chasse ¶.....	968
65) <.....	1336	Ste. Philomène, Two Mountains ¶	229
St. Michel de Rougemont, Rouville.....	250	St. Philomène de Fortierville, * see	
St. Michel des Saints, G-10.....	700	Ste. Philomène, H-14.....	275
St. Michel de Wentworth, I-8.....	891	Ste. Philomène Station, Chateaugay.	
St. Michel Station, Laprairie and Napierville †		St. Pie, I-12, (Ry 16) * † ∅	1673
St. Modeste, E-19, (Ry 141) †.....	817	St. Pie de Guire, H-12.....	1286
St. Moïse, Rimouski.....	908	St. Pierre aux Liens, Jacques Car-	
St. Moïse Station, C-22, (Ry 67) * † §	100	tier ¶.....	504
Ste. Monique, H-12, (Ry 67) ¶ §	700	St. Pierre Baptiste, H-14 *.....	877
Ste. Monique de Nicolet, H-12 * †.....	1974	St. Pierre Broughton Church, Beauce ¶	77
Ste. Monique des Deux Montagnes,		St. Pierre Broughton Station, Beauce ¶	70
I-10 *.....	940	St. Pierre de Charlesbourg, Quebec.	
St. Narcisse, Champlain, H-13, (Ry		St. Pierre de la Malbaie, Gaspé ¶	244
16) *.....	2015	St. Pierre de Sorel, Richelieu.	
St. Narcisse ¶ see Newbois, H-15.....	68	St. Pierre de Wakefield, Wright.....	54
St. Nazaire, Bagot.....	708	St. Pierre d'Orléans, G-15 †.....	595
St. Nazaire de Buckland, Dorchester.....	60	St. Pierre du Lac, Rimouski ¶.....	600
St. Nérée, G-16.....	1183	St. Pierre les Bequets, G-13 * †.....	1847
St. Nicholas, G-15, (Ry 67) * §.....	1627	St. Pierre Montmagny, G-16 * †.....	1127
St. Nicholas Est, Lévis.....	1627	St. Pierre, (Ry 14) ¶ ≈ 5 m S St	
St. Norbert, H-11, (Ry 14) * ≈.....	1292	Cuthbert, H-11.	
St. Norbert d'Arthabaska * see East		St. Pierre Station, G-16, (Ry 67) ¶ §	853
Arthabaska, H-14.....	746	St. Placide, I-9 * †.....	946
St. Norbert Station, Berthier.		St. Polycarpe, J-9, (Ry 65) * † §.....	1900
St. Octave, C-21, (Ry 67) * † §.....	1113	St. Polycarpe Junction, J-9, (Rys 16,	
St. Odilon, H-16 *.....	1300	65) † Δ § ∅ □.....	200
St. Omer, Bonaventure, (Ry 124).		St. Praxed, I-15 ¶.....	489
St. Onésime, F-18.....	583	St. Prime, C-13 *.....	1230
St. Ours, I-11 *.....	1918	St. Prime, I-12, (Ry 16) ¶	
St. Ours Lock, Richelieu.....	24	St. Prosper, Champlain, (Ry 14) * † ≈	1334
St. Pacôme, F-18 * † §.....	1665	St. Prosper de Dorchester, H-17 *.....	958
St. Pacome Station, Kamouraska,		Ste. Prudentienne, Sheford ¶	336
(Ry 67).		St. Raphael, East, G-16 *.....	2066
St. Pamphile, G-18 *.....	1307	St. Raphael, Jacques Cartier ¶	145
St. Paschal, E-18, (Ry 67) * † §.....	2352	St. Raymond, G-14, (Ry 122) * † ≈	3556
St. Patrice, Lotbinière ¶.....	44	St. Rédempteur, J-9.....	442
		St. Régis, K-8.....	1200
		St. Regis Pit (Ry 65) ¶ 1 m S St.	
		Isidore Junction, J-10.	
		St. Remi, J-10, (Ry 65) * <.....	2530

Towns, etc.—continued.

Pop.

St. Remi d'Amherst, Labelle*	780
St. Remi de Tingwick, I-14*	962
St. Robert, I-12, (Ry 120) † ⊕	950
St. Roch, I-11, (Ry 120) ¶	1841
St. Roch de Quebec * †	
St. Roch de Richelieu, I-11 * §	900
St. Roch des Aulnaies, F-17 *	1322
St. Roch l'Achigan, I-10 *	1400
St. Romain, I-15	950
St. Romuald d'Etchemin, G-15, (Ry 67) * † §	3589
St. Rosaire, Arthabaska *	878
Ste. Rosalie, I-12, (Rys 16, 65)	1115
Ste. Rosalie Junction, (Rys 16, 65, 67) ¶ † 1 m S Ste. Rosalie, I-12.	
Ste. Rose, I-10, (Ry 16) * † ‡ § ⊕	2513
Ste. Rose de Lima, Wright *	44
Ste. Rose de Watford, H-16, (Ry 118) 581	
Ste. Rose du Degé, E-20, (Ry 141) * †	200
Ste. Ruïne, Beauce.	
St. Sabine, J-12, (Ry 16)	440
Ste. Sabine de Bellechasse, Bellechasse.	
St. Samuel de Gayhurst, I 16 *	1366
St. Samuel de Horton, Nicolet	371
St. Samuel Station, I-16, (Ry 118) † ‡	
St. Sauveur de Québec, (Ry 16) * †	
St. Sauveur des Montagnes, I-9, (Ry 14) * ⊕	840
Ste. Scholastique, I-9, (Ry 16) * † ⊕	2416
St. Sébastien, J-11	1204
St. Sébastien de Beauce, Beauce * †	345
St. Sébastien Station, I-15, (Ry 118) †	
St. Sévère, H-12	864
St. Severin ¶ 10 m from St. Tite, G-12	184
St. Séverin de Beauvillage, H-16	706
St. Siméon, E-18 * .	1039
St. Simon, D-19, (Ry 67) ¶ † §	1385
St. Simon de Rimouski, D-19 * †	850
St. Simon de Yamaska, I-12 * †	1300
St. Simon Station, I-12, (Ry 16) ¶ ⊕	
St. Sixte, I-7	740
Ste. Sophie, I-10, (Ry 14) ¶ ≅	1112
Ste. Sophie de Lacorne, see St. Sophie, I-10	100
Ste. Sophie de Levrard, H-13 *	1415
Ste. Sophie de Mégantic, H-14	993
St. Stanislas de Champlain, Champlain, (Ry 14) * ≅	2294
St. Stanislas de Kostka, J-9, (Ry 106) * † ‡	1076
St. Sulpice, I-11	665
St. Sylvère, Nicolet *	1036
St. Sylvester, East, H-15 *	800
St. Sylvester, West, H-15	1458
St. Telesphore, Lévis ¶	200
St. Telesphore, J-9, (Ry 16) *	295
Ste. Théléc, Champlain * †	1658
Ste. Théléc Station, G-12, (Ry 14) * ≅	
St. Théodore, H-10	640
St. Théodore d'Acton, I-12	1453
Ste. Théodosie, I-11	532
St. Théophile, Beauce	526
St. Théophile ¶ see Lac à la Tortue, G-12.	285
Ste. Thérèse de Blainville, I-10, (Ry 16) * † ⊕	3080
St. Thomas d'Aquin, St. Hyacinthe	536
St. Thomas de Joliette, H-11, (Ry 16)	1570

Towns, etc.—continued.

Pop.

St. Thomas, Missisquoi ¶	125
St. Thomas, Montmagny ¶	440
St. Thurbie, Portneuf	80
St. Timothée, Beauharnois *	
St. Timothée Station, J-10, (Ry 106) † ‡	1790
St. Tite, G-12, (Ry 14) * † ≅	3311
St. Tite des Caps, F-16 *	1044
St. Ubalde, G-13 * †	1384
St. Ulric ¶ see Tessierville, C-2	502
St. Urbain de Charlevoix, E-16 * †	1228
St. Urbain de Châteauguay, J-10 *	1920
Ste. Ursule, H-11, (Ry 14) * ≅	2115
St. Ursule Falls, (Ry 14) ¶ ≅ 2 m S. St. Ursule, H-11.	
St. Valentin, St. Johns and Iberville * 1300	
St. Valère de Bulstrode, Arthabaska.	1192
St. Valérien, I-12 *	900
St. Valérien de Rimouski, D-20	840
St. Vallier, G-16 * †	1392
St. Vallier Station, G-16, (Ry 67) * §	30
Ste. Véronique, Labelle *	
Ste. Victoire, I-11	1073
Ste. Victoire, Drummond and Arthabaska ¶	160
St. Victor de Tring, H-16, (Ry 118) * † ‡	2471
St. Victor Station, Beauce	123
St. Vincent de Paul, I-10, (Ry 16) * † ⊕	3500
St. Vital de Lambton ¶ near Lambton, I-15	2075
St. Wenceslas, H-13, (Ry 67) * † §	1626
St. Yvon, B-8.	
St. Zacharie, I-17 *	1066
St. Zenon, G-10	510
St. Zéphirin, H-12 *	1695
St. Zotique, J-9, (Ry 65) †	950
Stadacona, F-13, (Ry 122) ≅	820
Stagsburn, I-5.	
Stanbridge East, J-12, (Ry 28) * † §	266
Stanbridge Ridge, J-12 ¶	
Stanbridge Station, J-12, (Rys 16, 28, 110) * † ‡ ⊕ ⊖	134
Stanbury, J-12	53
Standon, H-16 *	119
Stanford, H-14, (Ry 65) * † §	1525
Stanhope, J-14 †	70
Stanstead, K-13, (Ry 12) * † ‡	618
Stark's Corners, Pontiac	75
Starnesborough, J-10	250
Staynerville, I-9, (Ry 16) † ⊕	50
Steadman, Wright.	
Steel's, Pontiac.	
Stenson, Wolfe.	
Stockwell, J-10	100
Stoke Centre, J-14	100
Stoketon, (Ry 71) ¶ 2 m S. Brookbury, J-14.	
Stone, (Ry 28) ¶ 8 m S Farnham, J-12.	
Stonefield, I-8, (Ry 14) * ≅	48
Stoneham, G-15	91
Stornoway, I-15	56
Stottsville, J-11, (Ry 65) ¶ † <	100
Stratford, I-14, (Ry 118) ¶	
Stratford Centre, Wolfe *	85
Strathmore, (Rys 16, 65) § 2 m S Dorval, J-10.	
Stubb's Bay, Pontiac.	
Suffield, J-14	64
Sully, (Ry 16) ¶ 3 m NW Venosta, I-5.	

<i>Towns, etc.—continued.</i>	Pop.
Summerlea, Jacques Cartier	104
Summit, (Ry 71) ¶ 1 m N W Auckland, J-15.	
Summit, E-13, (Ry 122) ¶	
Summit, (Ry 16) ¶ ≅ 19 m S W Quebec, G-15.	
Sunny Bank, Gaspé.	
Sutton, J-12, (Ry 16) * + ∅	691
Sutton Junction, J-12 *	80
Sweetsburg, J-12, (Ry 16) * +	255
Sybil Cove, Saguenay (Summer P. O.)	
Sydenham Place, I-13	36
Tadousac, D-18 * + ●	511
Tadousac Ouest, Saguenay.	
Taillon, Saguenay * +	63
Talbot, G-13, (Ry 122) ¶ ≅	25
Talon, St. Johns and Iberville.	
Tancredia, Pontiac.	
Taschereau, Beauce.	
Tatehurst, Chateauguay	78
Tenaga, (Ry 16) ¶ 1 m S Kirks Ferry, J-6.	
Terminal Junction, (Ry 16) ¶ 3¼ m N Mount Carmel, G-12.	
Terrebonne, I-10, (Ry 16) * + ∅	1822
Tessierville, C-2 *	222
Teta a la Baleine, Saguenay +	
Tetreauville, 1 m S W Hull, J-6.	
Tetu, E-20 ¶	10
Tewkesbury, F-15	401
Textile, (Ry 16) ¶ ¾ m N E Magog, J-13.	
Thetford Mines, H-15, (Ry 118) * + ‡ 3000	
Thetford Mines West, Mégantic *	
Thetford North, Mégantic	211
Thibodeau, Lotbinière.	
Thivierge, Bonaventure.	
Thornby, Pontiac	18
Thorne Centre, Pontiac	100
Three Lakes, J-16	20
Three Rivers, H-12, (Ry 16) ¶ + Δ § ∅	9981
Thunder River, Saguenay +	11
Thurso, I-8, (Ry 16) * + ∅ ●	1578
Tikuape, -Chicoutimi.	
Timber, (Ry 16) ¶ ¾ m N E Papineauville, I-8.	
Timiskaming Station, I-19, (Ry 16) + (Summer P. O.)	
Tingck, Arthabaska *	
Tippins, Pontiac.	
Titus Station, J-14, (Ry 65)	35
Tobins, (Ry 67) ¶ + 3 m N E St. Eloi, D-19.	
Tolsta, I-15	40
Touffe de Pins, Beauce.	
Toupin, Richmond and Wolfe.	
Tourelle, Gaspé.	
Tourigny, Arthabaska.	
Tourvilles, (Ry 16) ¶ 4 m S Drummondville, I-13.	
Town Hall, (Ry 16) ¶ 10 m S Snake Creek, J-19.	
Trahan's Mills, I-15 ¶	30

<i>Towns, etc.—continued.</i>	Pop.
Travor Road, (Ry 16) ¶ 4 m N Masonville, J-13.	
Tremblay, D-15 *	60
Trenholm, I-13	327
Trenholme, (Ry 16) ¶ 5½ m W Belair, G-15.	
Tring Junction, H-16, (Ry 118) * + ‡	154
Triton Fishing Club, E-13, (Ry 122) ≅ (Summer P. O.)	
Trois-Pistoles, D 19, (Ry 67) * + §	1128
Trois Pistoles Est, Temiscouata.	
Trois Rivières, Three Rivers and St. Maurice.	
Trois Saumons, F-17, (Ry 67)	1200
Trois Saumons Station, L'Islet.	
Trottier, H-14	33
Trout Brook, I-14	41
Trout River, J-9	20
Trudell, (Ry 16) ¶ 10 m S E Mégantic, I-16.	
Tullochgorum, Chateauguay.	
Turenne, Lotbinière.	
Turgeon, Bellechasse.	
Turners Siding, (Ry 122) ¶ + 1 m S Kiskisink, E-13.	
Ulverton, I-13 *	600
Upper Bedford, + 2 m E Bedford, J-12.	1000
Upper Dam, (Ry 71) ¶ 2 m S Malvina, J-15.	100
Upper Kensington, Jacques Cartier.	
Upper Melbourne, Richmond	50
Upton, I-12, (Ry 65) * + §	20
Val Barrette, Labelle.	
Valcartier, G-15, (Ry 122)	150
Valcartier Station, G-15, (Ry 122) + ≅	20
Valcartier Village, G-15	70
Valcourt, J-13, (Ry 16) * ∅	271
Val des Bois * 40 m from Ottawa, J-6	87
Val des Eboulis, Vaudreuil.	
Val des Sables, Vaudreuil.	
Valencay, I-7	80
Valenciennes, Mégantic.	
Vale, Perkins, J-13	60
Valin, Chicoutimi and Saguenay.	
Valleyfield, J-9, (Rys 65, 106) * + Δ ‡ §	11055
Valley Junction, H-16, (Ry 118) ¶	
Valmont, H-12	125
Valmorin, H-9, (Ry 16) + ∅	50
Valois, J-10, (Rys 16, 65) §	100
Val Quesnel, Labelle.	
Valracine, J-15	50
Van Bruyssel, Quebec, (Ry 122) ≅	
Varennes, I-11, (Ry 120) * + §	218
Vauban, E-19, (Ry 141) §	287
Vaucluse, I-11, (Ry 16)	350
Vaudreuil, J-9, (Ry 16) * +	1402
Vaudreuil Station, J-9, (Rys 16, 65) § ∅	110

<i>Towns, etc.—continued.</i>	Pop.	<i>Towns, etc.—continued.</i>	Pop.
Vauquelin, Gaspé.		West Brome, J-12, (Ry 16) * ∅	400
Vauvert, Chicoutimi.		West Broughton, H-15 *	259
Vendome, Beauharnois.		Westbury, Compton	25
Venice, J-11	200	Westbury Basin, Compton	32
Venosta, I-5, (Ry 16) *	66	West Ditton, J-15	500
Verchères, I-11, (Ry 120) * † §	1689	West Ely, Shefford	63
Verdun, Jacques Cartier	1898	West Farnham ¶ †	2184
Vernet, I-8	20	Western Junction, J-10, (Rys 16, 65) ¶	
Versailles, J-11, (Rys 16, 28) † Δ § ∅ □	370	West Keith, Compton.	
Verte Vallée, Vaudreuil.		Westmount, (Ry 16) * † ∅ 2 m S	
Veziua's Corner, Wolfé.		Montreal I-11	8856
Vicars, J-10	60	Westover, (Ry 16) ¶ ¾ m S Drum-	
Victoriaville, H-14, (Ry 65) * † §	1693	mondville Junction, J-12.	
Viel, Temiscouata.		West Potton, K-13 ¶	400
Vieille Eglise, Lotbinière.		West Shefford, J-12 *	800
Viger, E-19	250	West Shefford Station, J-12, (Ry	
Village Belanger, Laval.		16, 28) ∅	268
Village aux Cariboux, Chicoutimi		West St. Philippe, I-9 ¶	
and Saguenay ¶	66	West Sutton, Brome.	
Village des Aulnaies, F-17 * †	500	Wheatland, I-13	751
Village des Fonds, Lotbinière ¶	284	Whitefish Lake, Wright.	
Village Richelieu, Rouville *	329	White Head, Percé, Gaspé.	
Village St. Onge, Three Rivers and		White House, (Ry 122) ¶ ≈ 4 m W	
St. Maurice		Indian Lorette, G 15.	
Villani, (Ry 16) ¶		White's, J-9, (Ry 65) ¶ † §	27
Ville Guay, Lévis.		White's Station, Huntingdon, see	
Villemare, (Ry 16) ¶ 4 m N W		White's, J-9	27
Routhier, G-7.		Whitton, (Ry 16) ¶ 4 m S W Spring	
Ville-Marie, Pontiac *	502	Hill, I-16.	
Villemay, Lévis.		Whitwick, I-15	80
Villeneuve, Maisonneuve.		Whitworth, Témiscouata, E-19, (Ry	
Villeray, Laval *		141) † §	
Villeroi, H-14, (Rys 67, 70) † §	509	Wickham Falls, Drummond.	
Ville St. Pierre, Jacques Cartier *		Wickham, West, I-13, (Ry 16) * ∅	220
Villette, J-14	43	Willard Mills, Compton.	
Vincennes, Champlain	88	Wilson's Corners, I-6	32
Vinoit, Labelle.		Wilson's Mills, H-15	45
Vinton, I-4, (Ry 16)	25	Windsor ¶ see Windsor Mills, I-14	2119
Visitation, (Ry 114) ¶ 1 m N E Cha-		Windsor Mills, I-14, (Rys 16, 65) * †	
teau Richer, G-15.		§ Δ ∅ □	2131
Wabasse, Labelle	50	Windsor North, Richmond.	
Wakefield, I-6, (Ry 16) * † ∅	250	Winslow South, Compton.	
Walker's Cutting, H-13, (Ry 65)	45	Woburn, Beauce *	25
Wallace Mill, Rimouski.		Wolfe Ridge, J-11.	
Waltham, I-4, (Ry 16) ¶ † ∅	102	Wolf Lake, Pontiac	64
Waltham Station, Pontiac *	50	Wolfstown, I-14 *	230
Warden, J-13, (Ry 16) † ∅	375	Woodlands, (Ry 106) † 5 m N E	
Warwick, I-14, (Ry 65) † §	1401	Beauharnois, J-10.	
Waterloo, J-13, (Rys 16, 28) † Δ § ∅ □	2020	Woodside, H-14	530
Waterville, J-14, (Ry 65) * † §	616	Wotton, I-14 *	375
Watkin's Mills, I-13 ¶	31	Wotton Hill, Wolfe.	
Wayagamac, F-12, (Ry 122) ¶ ≈		Wotton Nord, Richmond and Wolfe.	
Way's Mills, J-14	204	Wright, H-5, (Ry 16) *	540
Webster, (Ry 16) ¶ 1¾ m E Lennox-		Wyman, I-5, (Ry 16) * ∅	
ville, J-14.			
Weedon, I-15 † †	430	Yamachiche, H-12, (Ry 16) * † ∅	3295
Weedon Centre, I-15	20	Yamaska, H-12, (Ry 120) §	732
Weedon Station, Wolfe, (Ry 118) *	70	Yamaska East, Yamaska, (Ry 120) * †	
Weir, (Ry 14) * ∅ 3 m E Arundel, I-8.		Yarm. Pontiac	75
Weirstead, Pontiac	24	York Centre, Gaspé.	
West Aylwin, Wright.		York Village, Gaspé ¶	252
West Bolton, J-13	250	Youville, Jacques-Cartier	780

HANDY GUIDES

TO

New York City

Boston

Philadelphia

Washington

Hudson River and

Catskill Mountains

This new series of Guides gives in volumes of "handy" size the information generally desired by travelers seeking health, pleasure, or business.

PRICE OF EACH GUIDE, 25 CENTS.

Hotel information and printed matter for any of the above cities sent on request.

Rand, McNally & Co.

CHICAGO

NEW YORK

RAND McNALLY & CO.'S

SERIES OF

INDEXED POCKET MAPS

Sent by mail, postpaid, upon receipt of the following prices
(currency or postage stamps):

Alabama.....	\$.25	Missouri, Sectional, Cloth Cover.	\$ 1.00
Alaska.....	.25	*Missouri, Sectional, 46 x 40.....	1.50
Alberta, 28 x 21.....	.25	Montana, 53 x 34.....	.50
Arizona.....	.25	Montana.....	.25
Arkansas.....	.25	Nebraska.....	.25
British Columbia.....	.25	*Nebraska, Sectional, 23 x 40.....	.50
California.....	.25	" Cloth Cover.....	1.00
*California, Southern, Sectional.....	.50	*Nebraska, Sectional, 58 x 33.....	1.50
*Canada, Dominion of.....	.25	Nevada.....	.25
Central America.....	.25	New Hampshire.....	.25
Colorado.....	.25	New Jersey.....	.25
Connecticut.....	.25	New Mexico.....	.25
Delaware and Maryland, in one book.....	.25	New York.....	.25
Florida.....	.25	North Carolina.....	.25
*Florida, Sectional, 29 x 39.....	.50	North Dakota.....	.25
" Cloth Cover.....	1.00	*North Dakota, Sectional, 22 x 33.....	.50
Georgia.....	.25	" Cloth Cover.....	1.00
Idaho.....	.25	North Dakota, Sectional, 50 x 36.....	1.50
Illinois.....	.25	Nova Scotia, New Brunswick, and Prince Edward Island.....	.25
Illinois Sect'l, 33x54, Paper Cover.....	.50	Ohio.....	.25
" Cloth Cover.....	1.50	Ohio, Sectional, 35 x 31.....	.50
Indiana.....	.25	Ohio, Sectional, 51 x 44.....	1.50
*Indiana, Sectional, 27 x 41.....	.50	Oklahoma.....	.25
" Cloth Cover.....	1.00	Ontario, Province of, Canada.....	.25
Indiana, Sectional, 36 x 48.....	1.50	Oregon.....	.25
Iowa.....	.25	Pennsylvania.....	.25
Iowa Sectional, 33 x 24.....	.50	Quebec, Province of, Canada.....	.25
" Cloth Cover.....	1.00	Rhode Island.....	.25
*Iowa, Sectional, 48 x 36.....	1.50	Saskatchewan, 28 x 21.....	.25
Kansas.....	.25	South Carolina.....	.25
*Kansas, Sectional, 24 x 36.....	.50	South Dakota.....	.25
" Cloth Cover.....	1.00	*South Dakota, Sectional, 24 x 34.....	.50
*Kansas, Sectional, 54 x 32.....	1.50	" Cloth Cover.....	1.00
Kentucky.....	.25	*South Dakota, Sectional, 52 x 36.....	1.50
Louisiana.....	.25	Tennessee.....	.25
Maine.....	.25	Texas.....	.25
Manitoba.....	.25	*United States, Official R. R. Map of, 40 x 30 inches.....	.25
Maryland and Delaware, one book.....	.25	*United States, New Commercial Map of, 58 x 41.....	1.00
Massachusetts.....	.25	United States, New General, 66x46.....	1.50
Mexico.....	.25	Utah.....	.25
Mexico, 35 x 27, Cloth Cover.....	1.00	Vermont.....	.25
Michigan.....	.25	Virginia.....	.25
*Michigan, Sectional, 28 x 38.....	.50	Washington.....	.25
" Cloth Cover.....	1.00	West Virginia.....	.25
*Michigan, Sectional, 41 x 58.....	1.50	Wisconsin.....	.25
Minnesota.....	.25	*Wisconsin, Sectional, 28 x 38.....	.50
*Minnesota, Sectional, 28 x 38.....	.50	" Cloth Cover.....	1.00
" Cloth Cover.....	1.00	*Wisconsin, Sectional, 40 x 54.....	1.50
Mississippi.....	.25	Wyoming.....	.25
Missouri.....	.25		
*Missouri, Sectional, 30 x 26.....	.50		

* Without Index.

RAND McNALLY & CO.

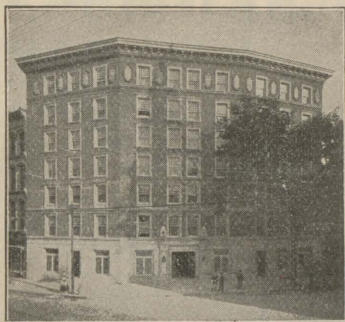
MAP PUBLISHERS

40-42 E. 22d St., N. Y.

160 to 174 Adams St., Chicago, Ill.

THE RENSSELAER

Troy, New York



The Most Unique Hotel
in the United States

Modeled after Old
.. English Inn ..

An Architectural and
Artistic Triumph

ABSOLUTELY FIREPROOF AND MODERN

200 Rooms, mostly with Bath . . . A la Carte
Restaurant, Dining Rooms, and Antique Grill

EUROPEAN PLAN: \$1.00 AND UPWARDS

HOTEL IMPERIAL

CORNER FALLS AND SECOND STREETS

NIAGARA FALLS, NEW YORK

OPEN THE YEAR ROUND

NIAGARA'S LEADING COMMERCIAL HOTEL

OPPOSITE NEW YORK CENTRAL DEPOT
ELECTRIC CARS FOR BUFFALO, THE GORGE, BELT LINE,
AND ALL OTHER PARTS OF THE CITY PASS THE DOOR

American Plan Popular Rates

“The Best Travelers

Stop at the Best Hotels”

WHITCOMB HOUSE

American and European Plans

ROCHESTER'S LEADING COMMERCIAL HOTEL

Corner Main Street and Clinton Ave.

ROCHESTER, N. Y.

Rebuilt, Enlarged, and Newly Furnished Throughout

N E W
LOBBY
Restaurant
Rathskeller
Billiard Room

Every Room has running Hot and Cold Water and Long-Distance Telephone
Seventy Rooms have Private Baths
Highest Standard of Service, Equip-ment, and Furnishings

POPULAR RATES PREVAIL

WM. E. WOOD, Proprietor

Also, **MANSION HOUSE, Greenfield, Mass.**

Not A but **THE** **Safety Razor**

A Mechanical Perfection, which has been tested and tried out by over 5,000,000 users all over the world, is **THE STAR SAFETY RAZOR.** It accomplishes its work with safety, comfort and dispatch.

Blades are forged and full concaved. With proper care they will last a lifetime. Strop the blades occasionally.

Shaves the heaviest beard and does not irritate the tenderest face.

Our razor may be inspected at any Cutlery Store. Star Razors in sets, from \$1.50 up.

With the Automatic Stropping Machine and Strop, \$4.50 a set.

THE STAR SAFETY CORN RAZOR

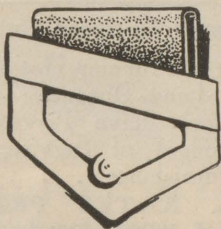
Simple, Safe and Sure, on sale by all dealers, or will be sent you from our factory on receipt of \$1.00.

As the Christmas season approaches consider the advisability of purchasing the **STAR SAFETY RAZOR** and the **STAR CORN KNIFE** for relatives or friends.

KAMPFE BROS., 25 Reade Street, NEW YORK



Carry All
your information
in your vest pocket



It's the
Handy,
Logical
Place

You can keep track of all the little things so apt to slip a busy man's mind. An

LOOSE I-P LEAF
MEMO BOOK

will remember for you. It will let you find what you want when you ought to have it. It will help keep your pockets free.

LOOSE I-P LEAF Memo Books are made in two styles and sufficient sizes to care for every need. If your stationer cannot supply you write direct to

IRVING-PITT MFG. CO.,

Dept. "M"

Kansas City, Mo.

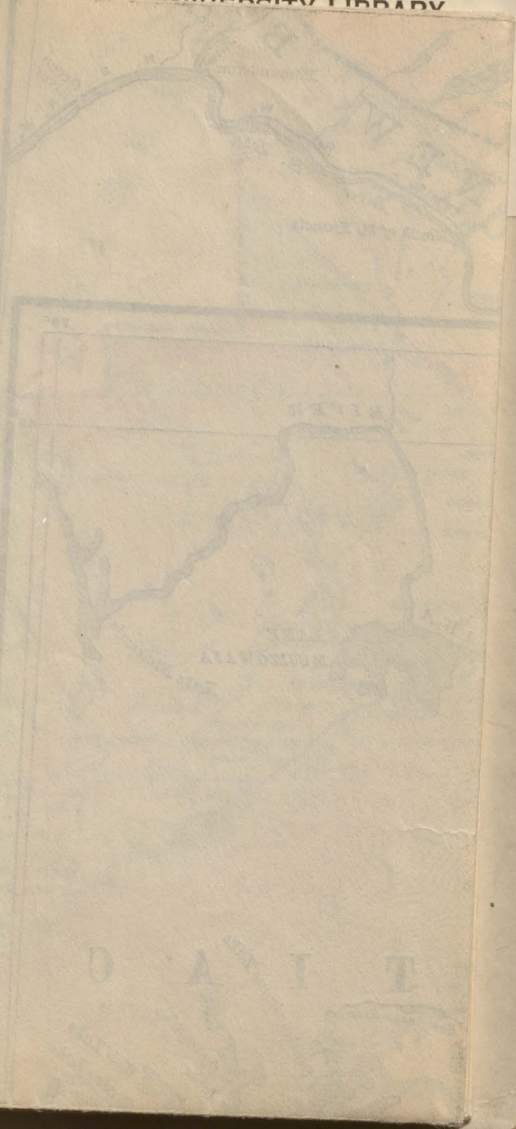


N

O
O

H
O

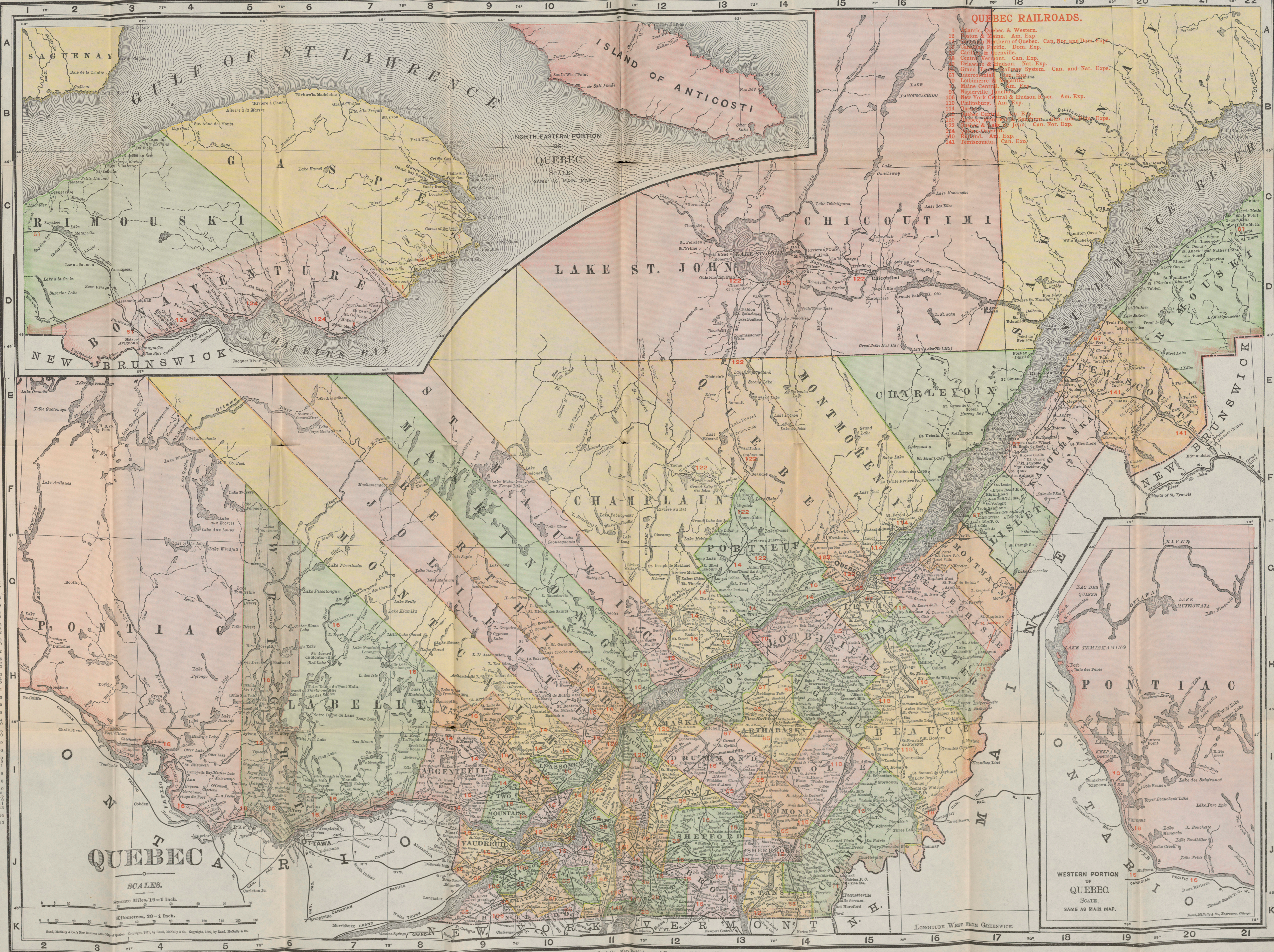
O A I T



- Quebec
- PRINCIPAL CITIES**
- Fig. - Population
1. Montreal
 2. Quebec
 3. Trois-Rivières
 4. Saguenay
 5. Lévis
 6. Shawville
 7. Cap-Saint-Ignace
 8. Cap-Saint-Jacques
 9. Cap-Saint-Michel
 10. Cap-Saint-Thomas
 11. Cap-Saint-Louis
 12. Cap-Saint-Jean
 13. Cap-Saint-Étienne
 14. Cap-Saint-André
 15. Cap-Saint-Charles
 16. Cap-Saint-Jacques
 17. Cap-Saint-Michel
 18. Cap-Saint-Thomas
 19. Cap-Saint-Louis
 20. Cap-Saint-Jean
 21. Cap-Saint-Étienne
 22. Cap-Saint-André
 23. Cap-Saint-Charles
 24. Cap-Saint-Jacques
 25. Cap-Saint-Michel
 26. Cap-Saint-Thomas
 27. Cap-Saint-Louis
 28. Cap-Saint-Jean
 29. Cap-Saint-Étienne
 30. Cap-Saint-André
 31. Cap-Saint-Charles
 32. Cap-Saint-Jacques
 33. Cap-Saint-Michel
 34. Cap-Saint-Thomas
 35. Cap-Saint-Louis
 36. Cap-Saint-Jean
 37. Cap-Saint-Étienne
 38. Cap-Saint-André
 39. Cap-Saint-Charles
 40. Cap-Saint-Jacques
 41. Cap-Saint-Michel
 42. Cap-Saint-Thomas
 43. Cap-Saint-Louis
 44. Cap-Saint-Jean
 45. Cap-Saint-Étienne
 46. Cap-Saint-André
 47. Cap-Saint-Charles
 48. Cap-Saint-Jacques
 49. Cap-Saint-Michel
 50. Cap-Saint-Thomas
 51. Cap-Saint-Louis
 52. Cap-Saint-Jean
 53. Cap-Saint-Étienne
 54. Cap-Saint-André
 55. Cap-Saint-Charles
 56. Cap-Saint-Jacques
 57. Cap-Saint-Michel
 58. Cap-Saint-Thomas
 59. Cap-Saint-Louis
 60. Cap-Saint-Jean
 61. Cap-Saint-Étienne
 62. Cap-Saint-André
 63. Cap-Saint-Charles
 64. Cap-Saint-Jacques
 65. Cap-Saint-Michel
 66. Cap-Saint-Thomas
 67. Cap-Saint-Louis
 68. Cap-Saint-Jean
 69. Cap-Saint-Étienne
 70. Cap-Saint-André
 71. Cap-Saint-Charles
 72. Cap-Saint-Jacques
 73. Cap-Saint-Michel
 74. Cap-Saint-Thomas
 75. Cap-Saint-Louis
 76. Cap-Saint-Jean
 77. Cap-Saint-Étienne
 78. Cap-Saint-André
 79. Cap-Saint-Charles
 80. Cap-Saint-Jacques
 81. Cap-Saint-Michel
 82. Cap-Saint-Thomas
 83. Cap-Saint-Louis
 84. Cap-Saint-Jean
 85. Cap-Saint-Étienne
 86. Cap-Saint-André
 87. Cap-Saint-Charles
 88. Cap-Saint-Jacques
 89. Cap-Saint-Michel
 90. Cap-Saint-Thomas
 91. Cap-Saint-Louis
 92. Cap-Saint-Jean
 93. Cap-Saint-Étienne
 94. Cap-Saint-André
 95. Cap-Saint-Charles
 96. Cap-Saint-Jacques
 97. Cap-Saint-Michel
 98. Cap-Saint-Thomas
 99. Cap-Saint-Louis
 100. Cap-Saint-Jean

QUEBEC RAILROADS.

1. Atlantic, Quebec & Western.
2. Boston & Maine, Am. Exp.
3. Canadian Northern, Can. Exp.
4. Canadian Pacific, Dom. Exp.
5. Canadian National, Can. Exp.
6. Carleton Place & Grenville, Can. Exp.
7. Champlain, Can. Exp.
8. Delaware & Hudson, Nat. Exp.
9. Grand Trunk, Can. and Nat. Exps.
10. Intercolonial, Can. Exp.
11. Lehigh Valley, Can. Exp.
12. Maine Central, Can. Exp.
13. Naperville Junction, Can. Exp.
14. New York Central & Hudson River, Am. Exp.
15. Phillipsburg, Am. Exp.
16. Quebec Central, Can. Exp.
17. Quebec, Montreal & St. Lawrence, Can. Exp.
18. Quebec & Lake St. John, Can. Exp.
19. Quebec & Saguenay, Can. Exp.
20. Richelieu, Can. Exp.
21. Temiscouata, Can. Exp.



Waterman's Ideal Fountain Pen



Endorsed by
the Millions
Now using them the world over

AN ABLE PEN FOR AN ABLE MAN

Waterman's  Fountain Pen
•The pen with the Clip-Cap

Supplies a pocket companion which will write for a lifetime, during pleasure or business, at home or abroad. It is never mistrusted, for it has served many years all over the world as the greatest writing tool of the universe.

The Spoon Feed regulates perfectly the flow of ink to the very point of the pen, and eliminates all possibility of overflow. The Clip-Cap is the safeguard against loss from the pocket.

For Sale by the Best Dealers Everywhere

W. L. Waterman Co., Limited

136 ST. JAMES ST., MONTREAL
NEW YORK LONDON PARIS

4150668