

A CHART of the Passages into SANDWICH BAY

with the adjacent coast
Surveyed in H.M.S. Favorite Capt. H. Robinson

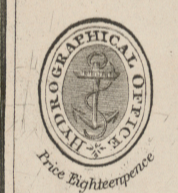
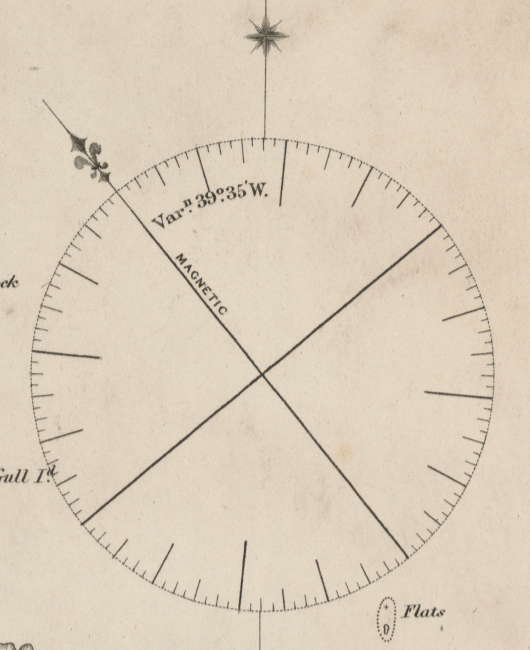
By
Lieut. Robt. Pearce

1820.

10 Cables 0 1 2 3 Sea miles 4

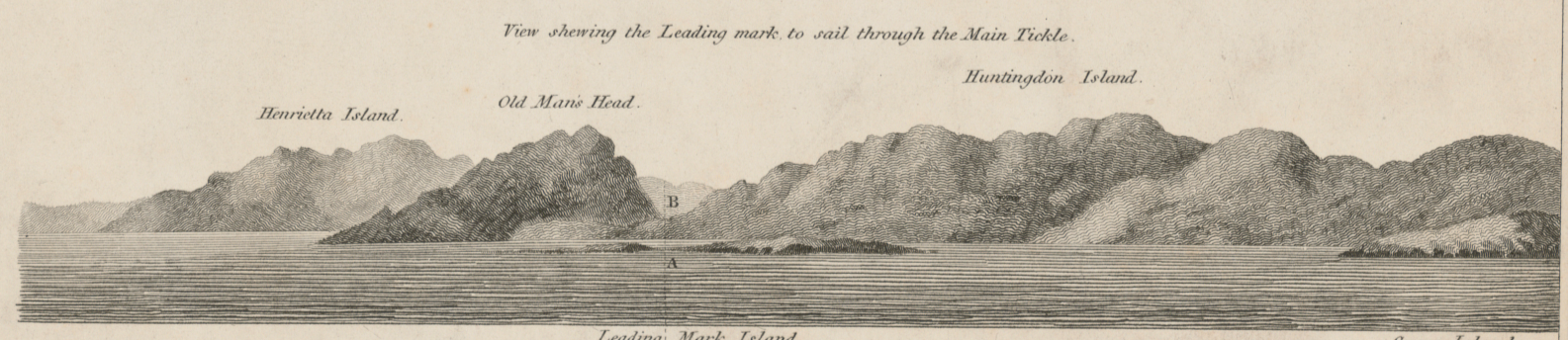
Cartwrights H^r (Caribou Castle) Lat. 53° 42' 37" N. Long. 56° 59' 50" W. (Greenwich)

SOUNDINGS IN FATHOMS



SANDWICH

BAY



View showing the Leading mark to sail through the Main Tickle. Henrietta Island. Old Mans Head. Huntingdon Island.



View of the Land over Table hill Cove, showing the mark for clearing the spit off the Main Tickle point. South Brenton I^s. North Brenton I^s kept as in this view about its own length open to the eastward of the southern one. Round Island of the spit off the Main Tickle point.

London: Published according to Act of Parliament by Capt. H. R. N. Hydrographer to the Admiralty, 9th April 1821. Corrections July 1869. Sold by A. R. Bate Agent for the Admiralty Charts, 51 Postage & 11 King Street, Tower Hill.