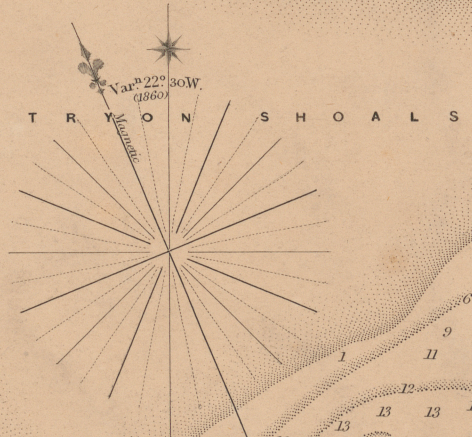
  
 GULF OF ST. LAWRENCE  
 PR. EDWARD ISLAND  
**CRAPAUD**  
 ROAD

Surveyed by Capt<sup>l</sup> W.H. Bayfield R.N. 1842.  
 Inman Pt<sup>l</sup> 46° 11' 47" N. and 63° 27' 46" W.  
 Assisted by Lieut<sup>t</sup> J. Orlebar & G.A. Bedford  
 H.W.F. & C.X.<sup>l</sup> Springs rise 8 feet Neaps 6 f.

SOUNDINGS IN FEET  
 Variation 22° 30' W (1860) increasing 7 annually



London Published according to Act of Parliament at the Hydrographic Office of the Admiralty June 10<sup>th</sup> 1850. Corrections to 1860.  
 Sold by J.D. Potter, Agent for the Admiralty Charts 31 Poultry and 11 King St. Tower Hill.

Engraved by J. & C. Walker  
 2000