

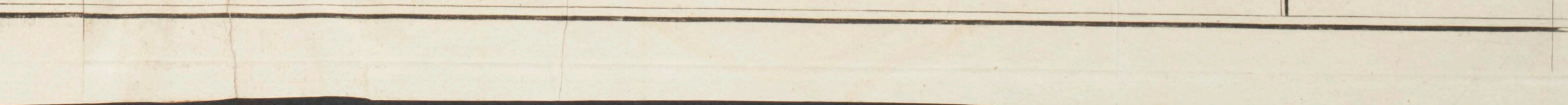
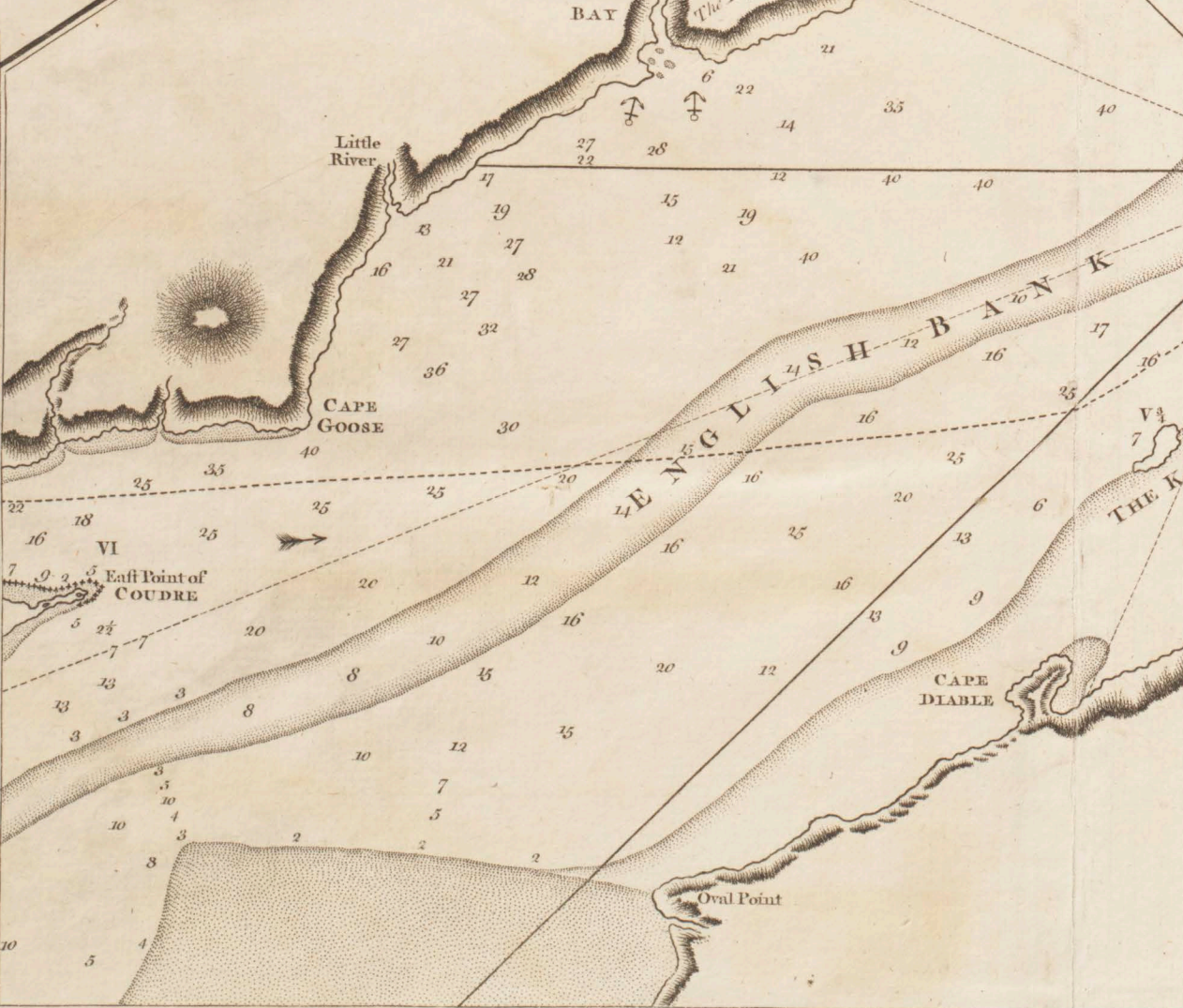
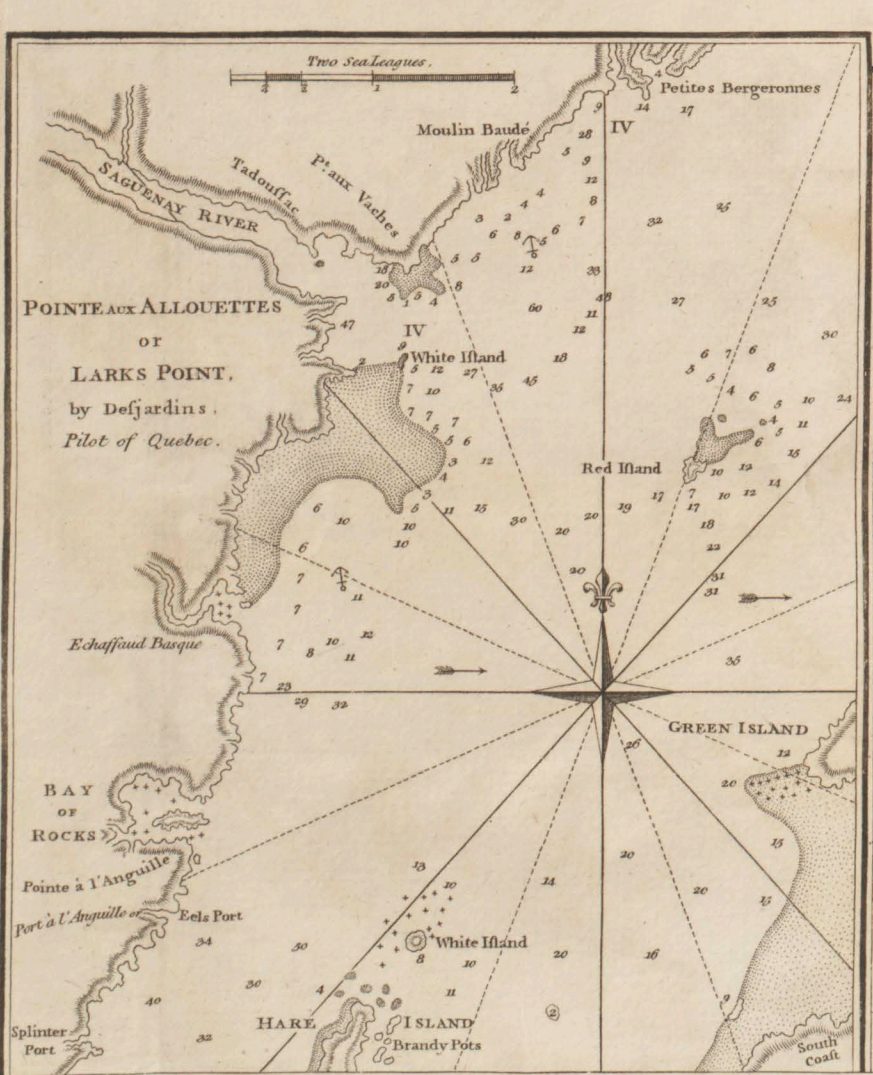
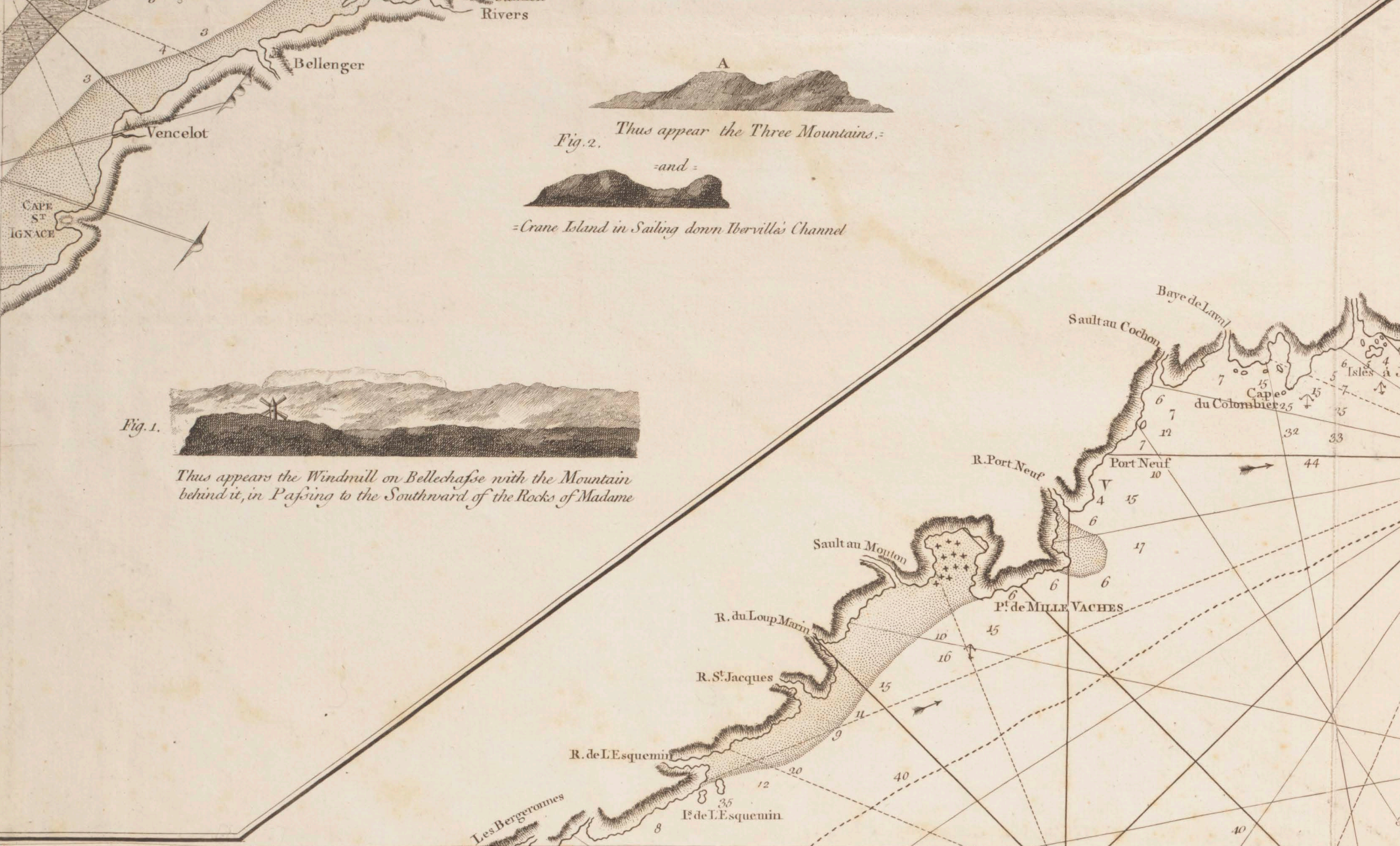
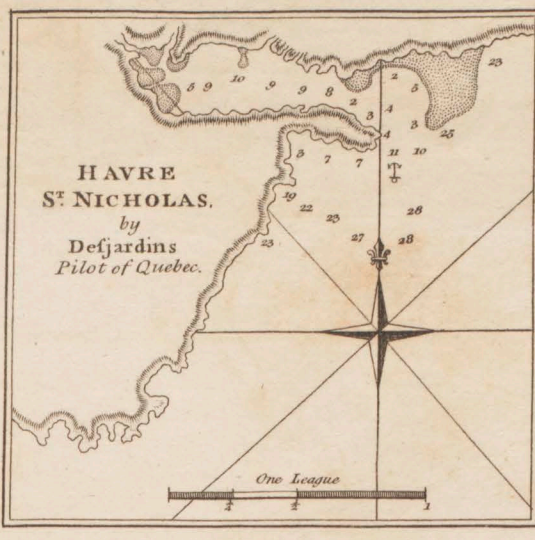
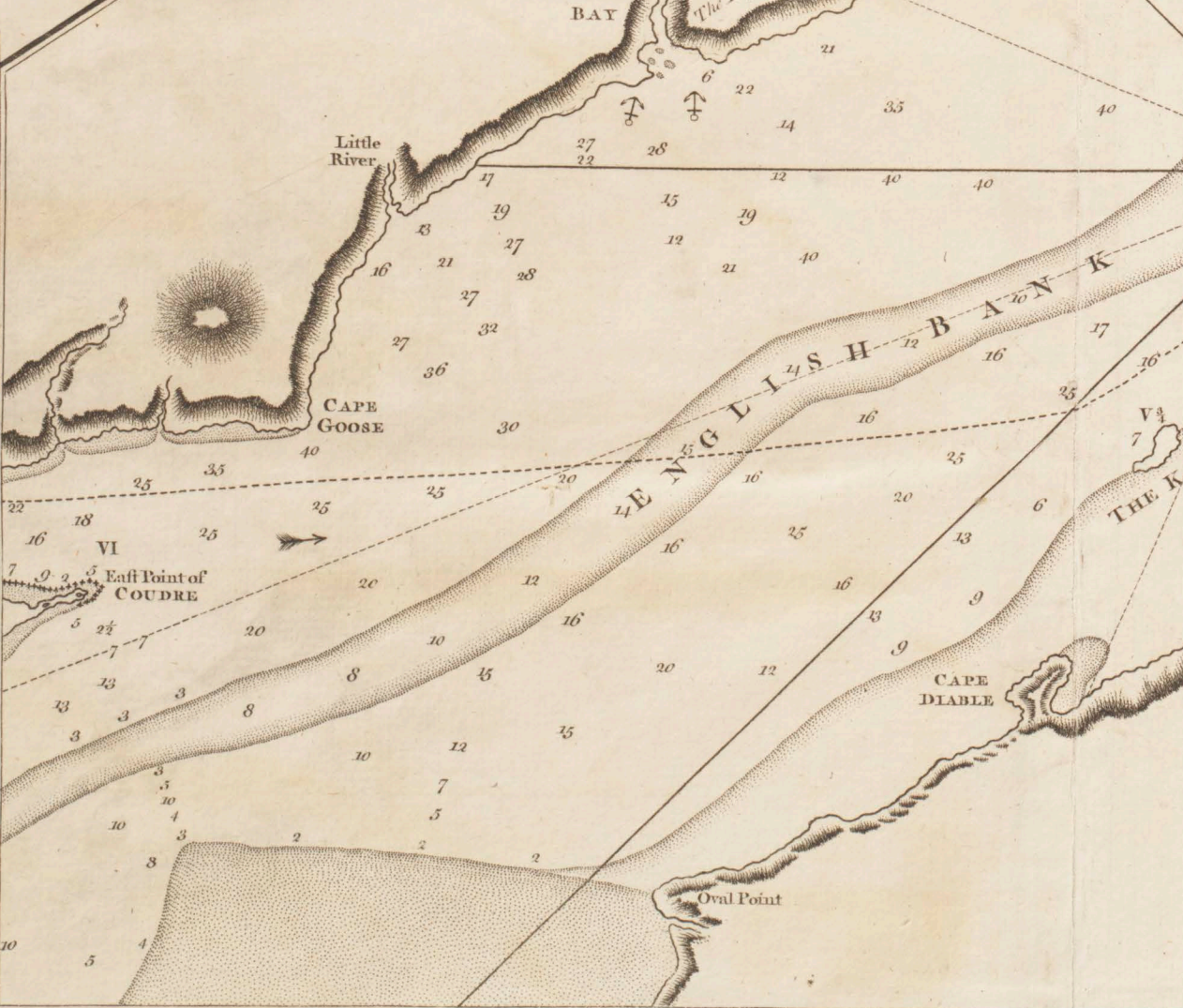
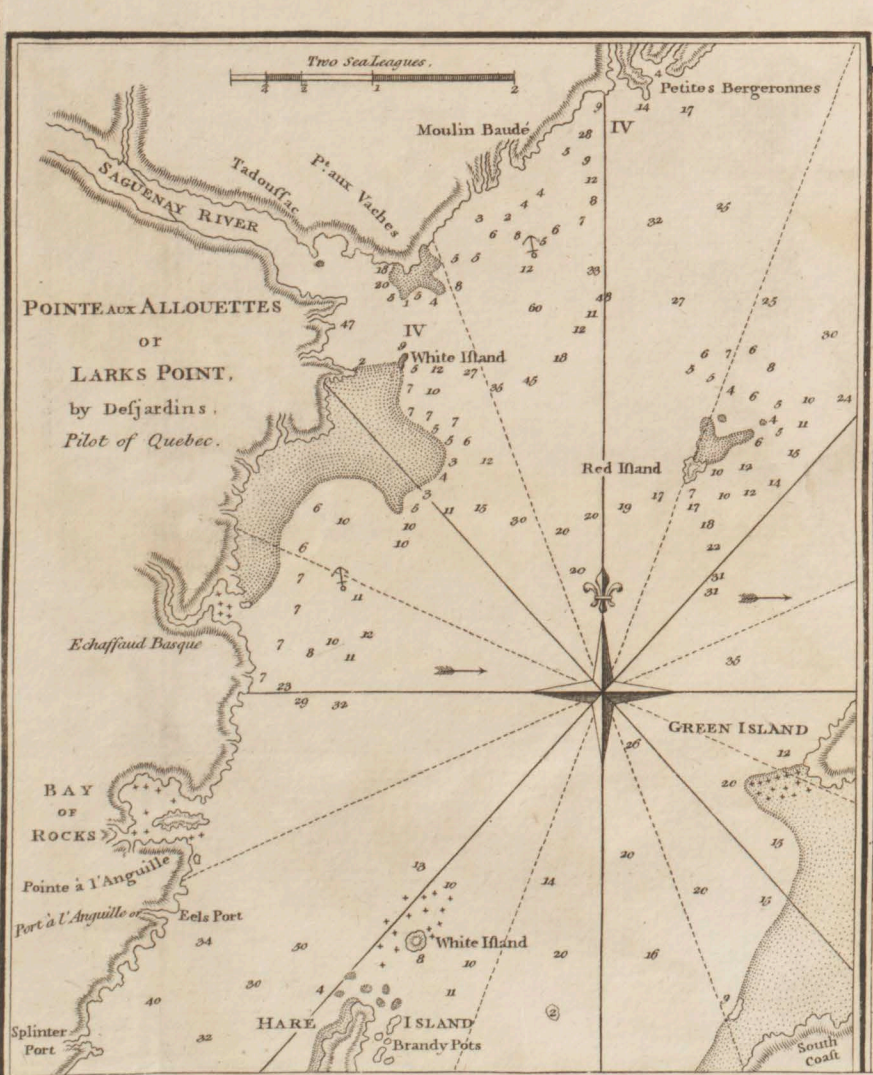
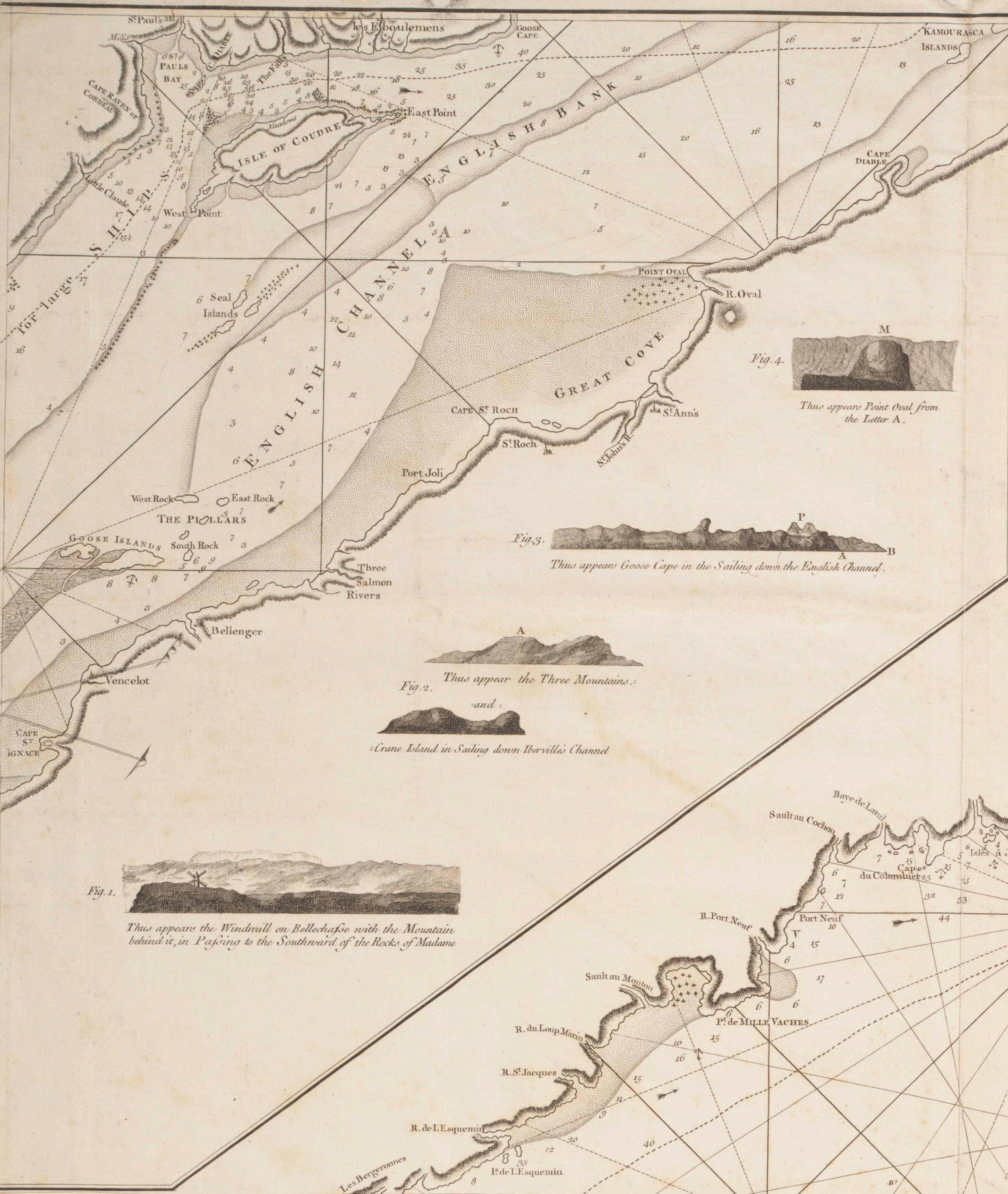
These appears the Land between the Island Bonaventure and Cape Rozier: when the Island bears W. by S. distance 4 or 5 Leagues, and the Cape N.W. distance 8 or 9 Leagues.

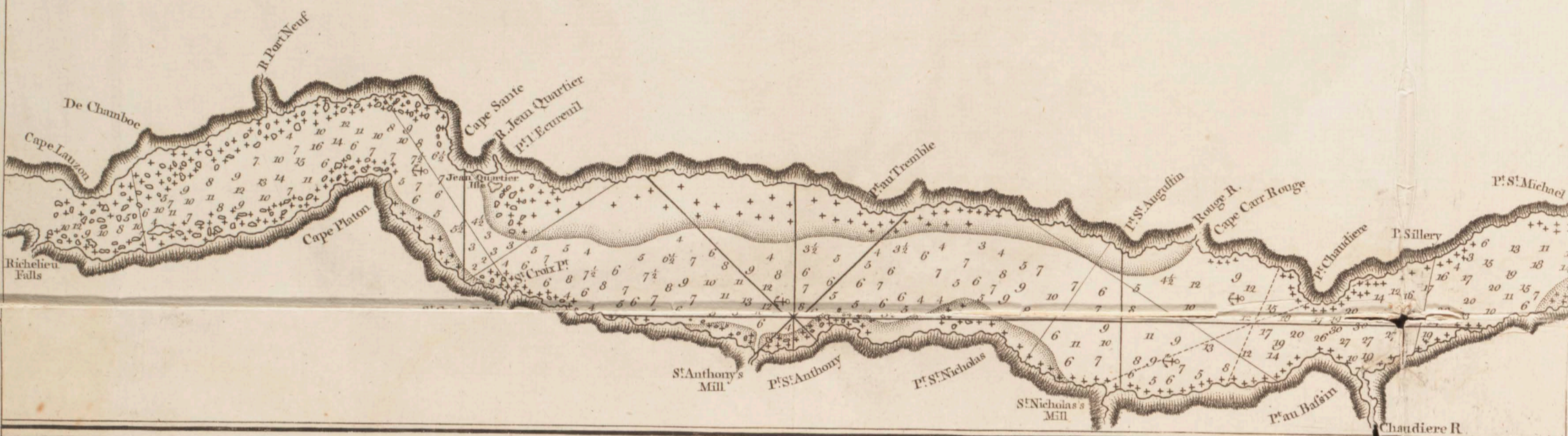
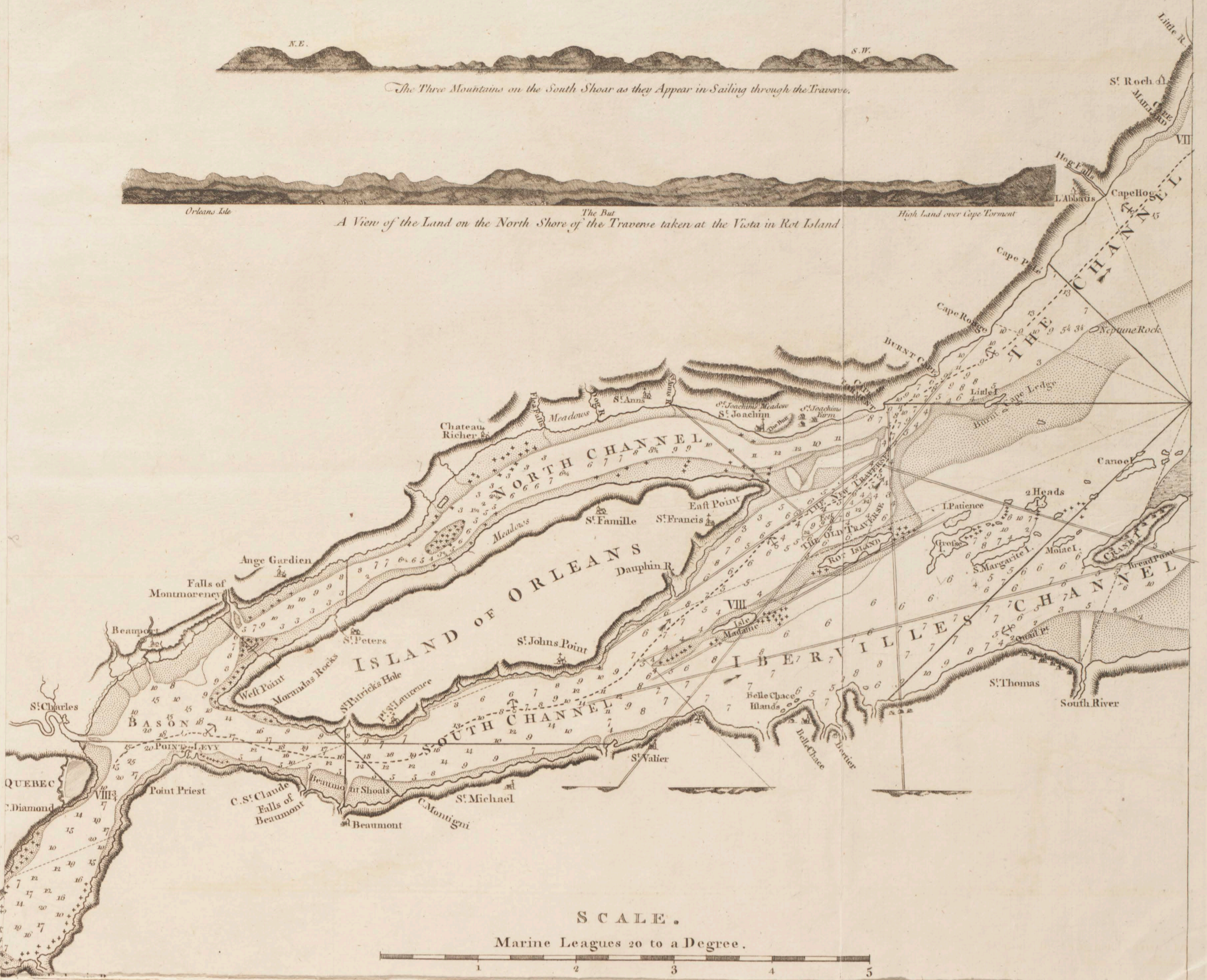
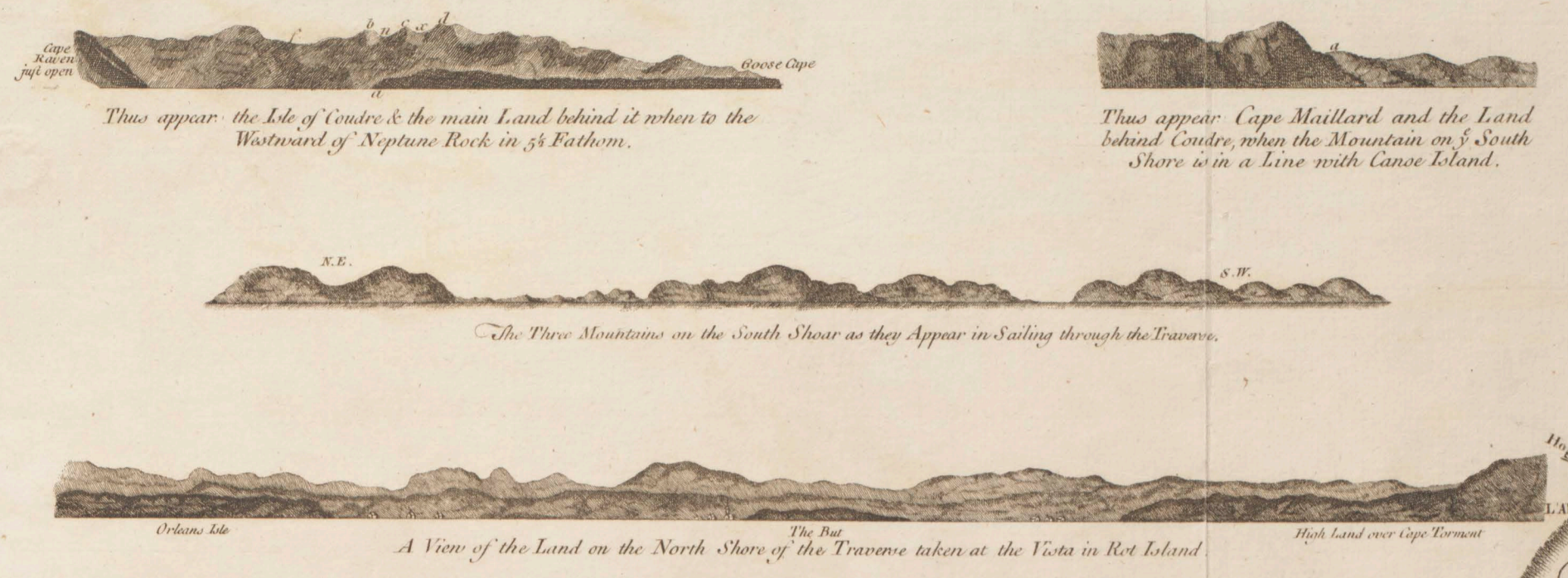
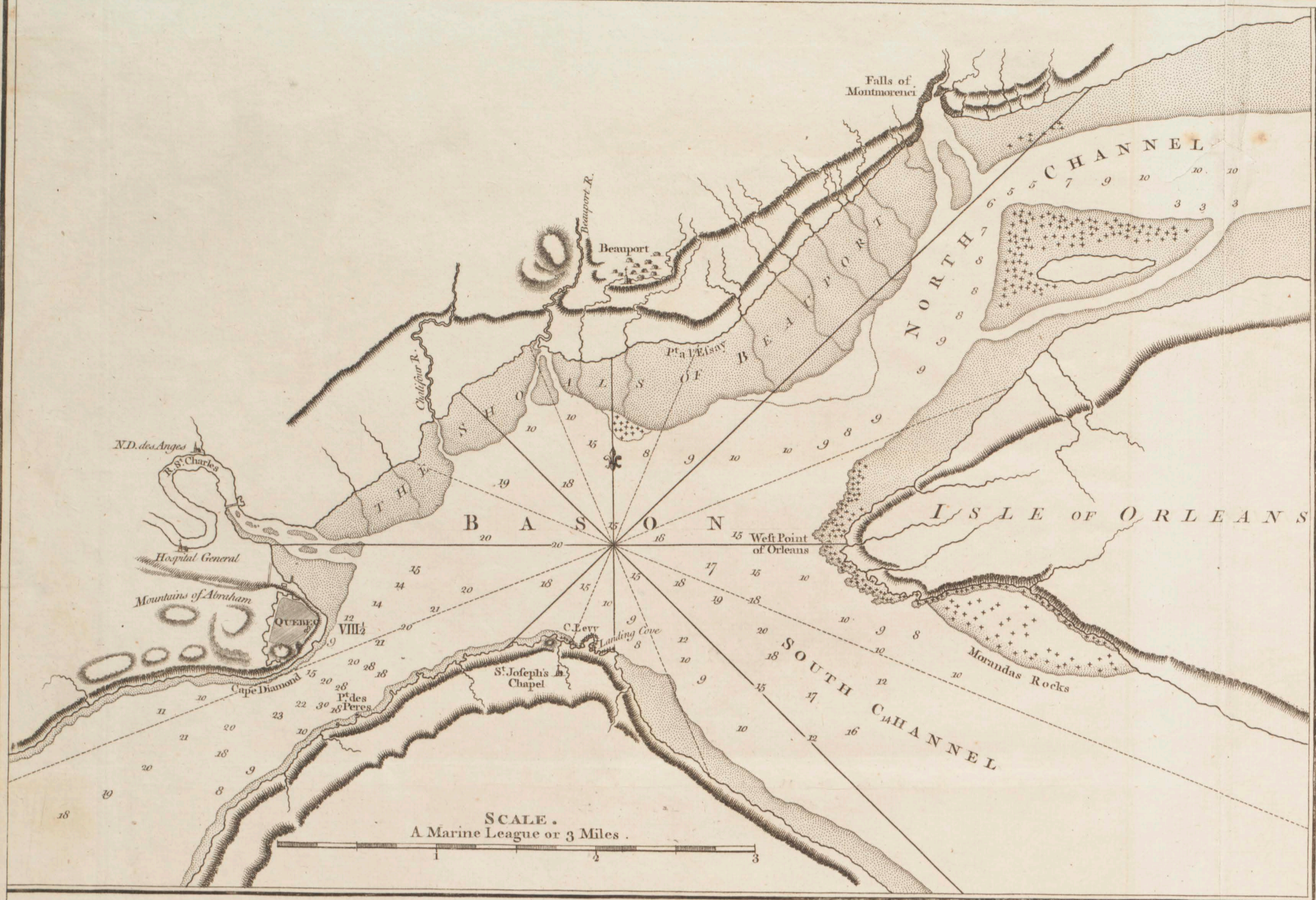
High Rugged Land E.S.W.

This appears Bonaventure Island & the Land to the Northward of it, when the Island bears S.W. the Height under d.S.W. & Cape Gaspee W. by S.

This appears Cape Gaspee when the Cape bears W. by N. at the letter n is a Rock off the Cape called / la Vieille / Old Woman which appears at this bearing.

When the Point at D. bears N. by E. distant 4 Miles.



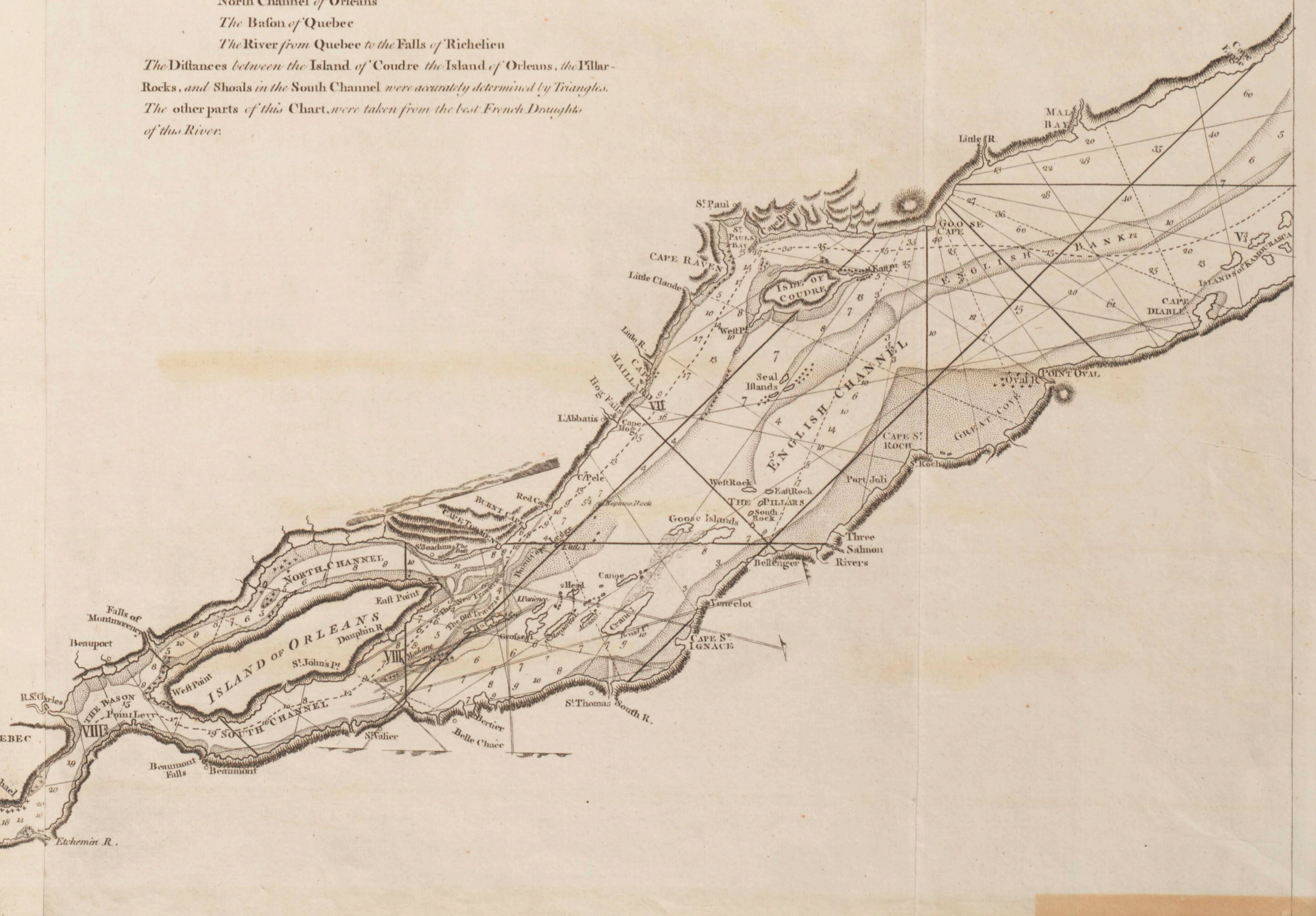


A NEW CHART
OF THE
RIVER ST. LAURENCE.
FROM THE
ISLAND of ANTICOSTI
To the FALLS of RICHELIEU:
WITH ALL THE
ISLANDS, ROCKS, SHOALS, and SOUNDINGS.
ALSO
PARTICULAR DIRECTIONS
For NAVIGATING the RIVER with SAFETY.
Taken by ORDER of
CHARLES SAUNDERS, Esq:
Vice-Admiral of the BLUE, and Commander in Chief
of His MAJESTY'S SHIPS in the
Expedition against QUEBEC in 1759.
Engraved by THOMAS JEFFERYS
Geographer to his Royal Highness the Prince of WALES.
Published by COMMAND of
The Right Honourable the LORDS COMMISSIONERS of the
ADMIRALTY.
LONDON: Printed for ROB^t SAYER & Jⁿ BENNETT, Map & Sea-Chart Sellers, N^o. 53. Fleet Street,
as the Act directs: 16 Feb^r 1775.

This CHART was Drawn from particular Surveys of the following
Places: and Published for the Use of the British Navigators, by Com-
mand of the Right Honourable the Lords Commissioners of the Admiralty
Full Mall, May 1760.
Charles Saunders.

- Galpee Bay
- Mingun Harbour and Islands
- Seven Islands, and the Bay
- Hare Island
- Island of Coude and St. Pauls Bay
- The Traverse with the Lines of Direction
- South Channel of Orleans
- North Channel of Orleans
- The Basin of Quebec
- The River from Quebec to the Falls of Richelieu

The Distances between the Island of Coude, the Island of Orleans, the Pillar-
Rocks, and Shoals in the South Channel were accurately determined by Triangles.
The other parts of this Chart were taken from the best French Drawings
of this River.



SCALE.
Marine Leagues 20 to a Degree.