

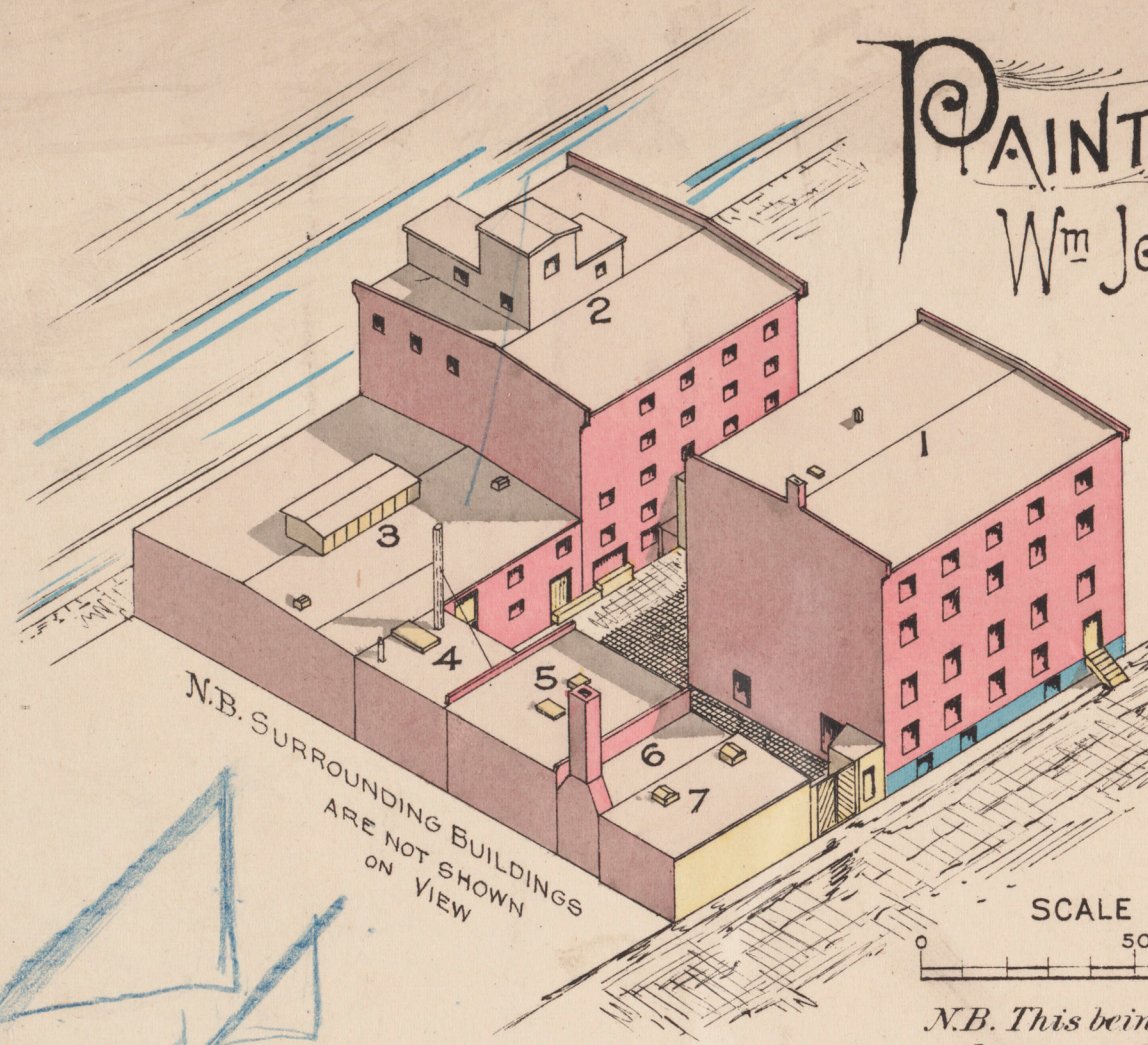
PAINT & COLOR WKS.

Wm Johnson & Sons (Limited)
MONTREAL P.Q.

MAY 1893

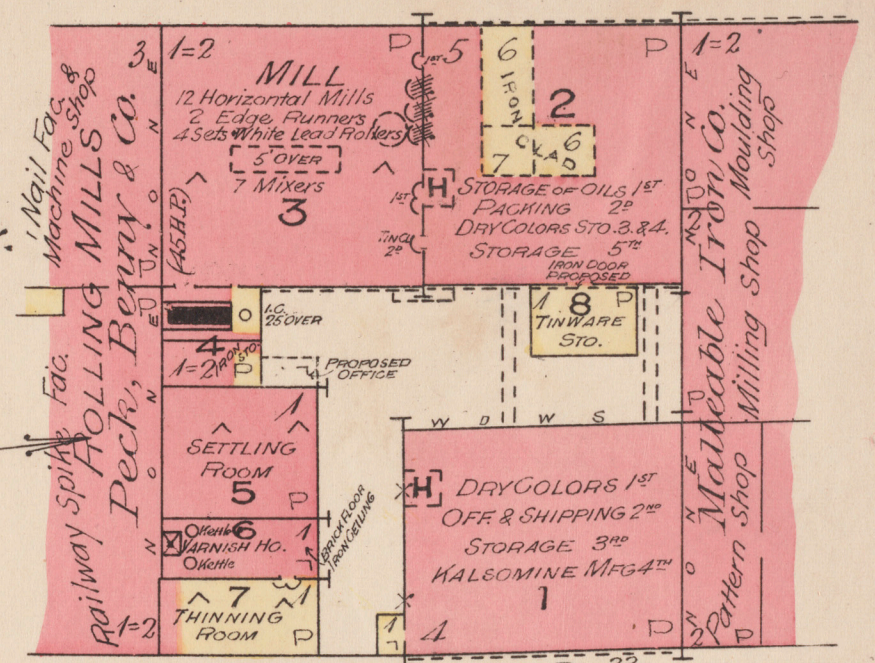
CHAS. E. GOAD
Civil Engineer.

LACHINE CANAL
About 250 wide



SCALE 50 FEET = 1 INCH

N.B. This being an Isometric Projection and to same Scale as Plan. Vertical Dimensions can be scaled from it.



10" PIPE --- MILL
12" PIPE FROM LACHINE CANAL
SUPPLY FOR STEAM FIRE ENGINES
No Exposures

Owners..... Wm. Johnson & Sons (Limited)
 Manufacture... Paints & Colors.
 Employes..... 75 Men, girls & boys.
 Power..... Water & auxiliary steam.
 Heat..... Steam.
 Light..... Gas.
 Fuel..... Coal.
 Benzine..... 5 Barrels at a time stored in No. 7
 Turpentine..... " " " " "
 Linseed Oil... By carload. Boiled in No. 6 - Raw stored in No. 2 - Boiled in iron tanks in No. 5.
 Waste..... Collected every night & burnt.
 Smoking strictly prohibited
 - Construction -
 Walls..... No. 1 - 16" Brick 1st-12"-2.3.4 - No. 2 - 16" Brk. 1st-12"-2.3.4.5 - No. 3 - 12" Brk. - No. 5 - 12" Brk. - No. 6 - 12" Brick.
 Floors..... No. 1 - 3" Pine tongued & grooved on joists 3" x 12", 30" centres, on beams 12" x 12", 16'

16' apart. 4th - 3" over 1" Pine
 No. 2 - 2" Pine tongued & grooved, on joists 4" x 12", 24" centres on 2-12", 14" braced together 12' apart (1st & 2nd floors), 3rd & 4th floors on single 12" x 14" posts. 5th floor on posts 8" x 8", 12' centres. Joists 3" x 12" 2' centres.
 No. 3 - 2" Pine tongued & grooved on posts 12" x 12", 12' centres, joists 3" x 12" 3' centres.
 Doors..... Tin clad & iron doors (See Plan)
 Shutters..... Tin clad on 5th floor of No. 2 overlooking No. 5
 Stairs..... Open, wooden.
 Hoists..... Open, sliding wooden doors in No. 1 - Automatic doors in No. 2.
 - Protection -
 Watchman... Night & Sunday, no clock.
 Fire Alarm... On Mill St, about 50' west of No. 1
 Outside Protection. 3 Hydrants, on Mill St, one opposite Works & the others about 100 yds distant, with 4 nozzles & Fire Engine Attachment, 70 lbs. pressure.

KEY

CORRUGATED IRON	GREY
BRICK BUILDINGS ARE	RED
STONE " " "	BLUE
WOODEN " " "	YELLOW
BUILDINGS MARKED R.C. ARE ROUGH CAST OR PLASTERED	
NO. OF STORIES	FIRE WALL ONE FOOT ABOVE ROOF
SLATE ROOF	" TWO FEET "
TIN OR METAL ROOF	FRAME PARTITION
COMPOSITION ROOF	OPENING IN BRICK WALL
SHINGLES OR WOOD	OPENING WITH IRON DOORS
SHINGLES IN MORTAR	WINDOWS WITH IRON SHUTTERS
MANSARD ROOF	WINDOW ON 1ST STORY
STEAM BOILER	" " 2ND "
STEAM ENGINE (OHP)	" " 1ST & 3RD "
	" " 2ND & 4TH "
DOTS REPRESENT OPENINGS	BRICK PARAPET WALL
	STABLE
	GALLERY OR VERANDAH
	METAL CORNICE (SOLID LINE)
	WOODEN CORNICE (BROKEN LINE)
	HYDRANTS SHOWN THUS
	STANDPIPES THUS