

PHOTOGRAPHS

PRESENTED TO THE LIBRARY

BY

Professor R. N. Evans.

Exm

+P16



No. *152714*

Library of McGill University

MONTREAL

Received *1916*

16. Nov 16. View to Bay Hill, E. side

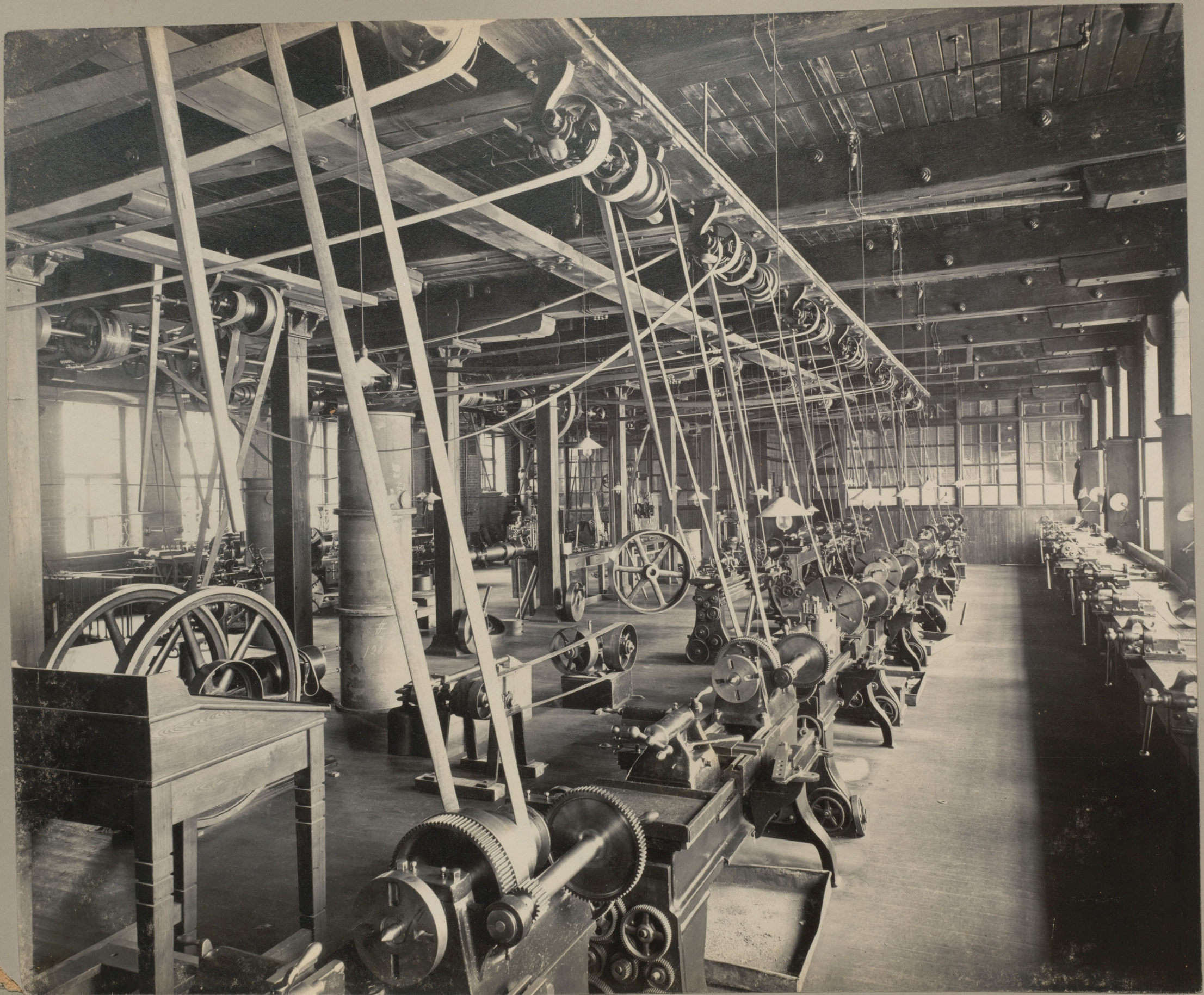


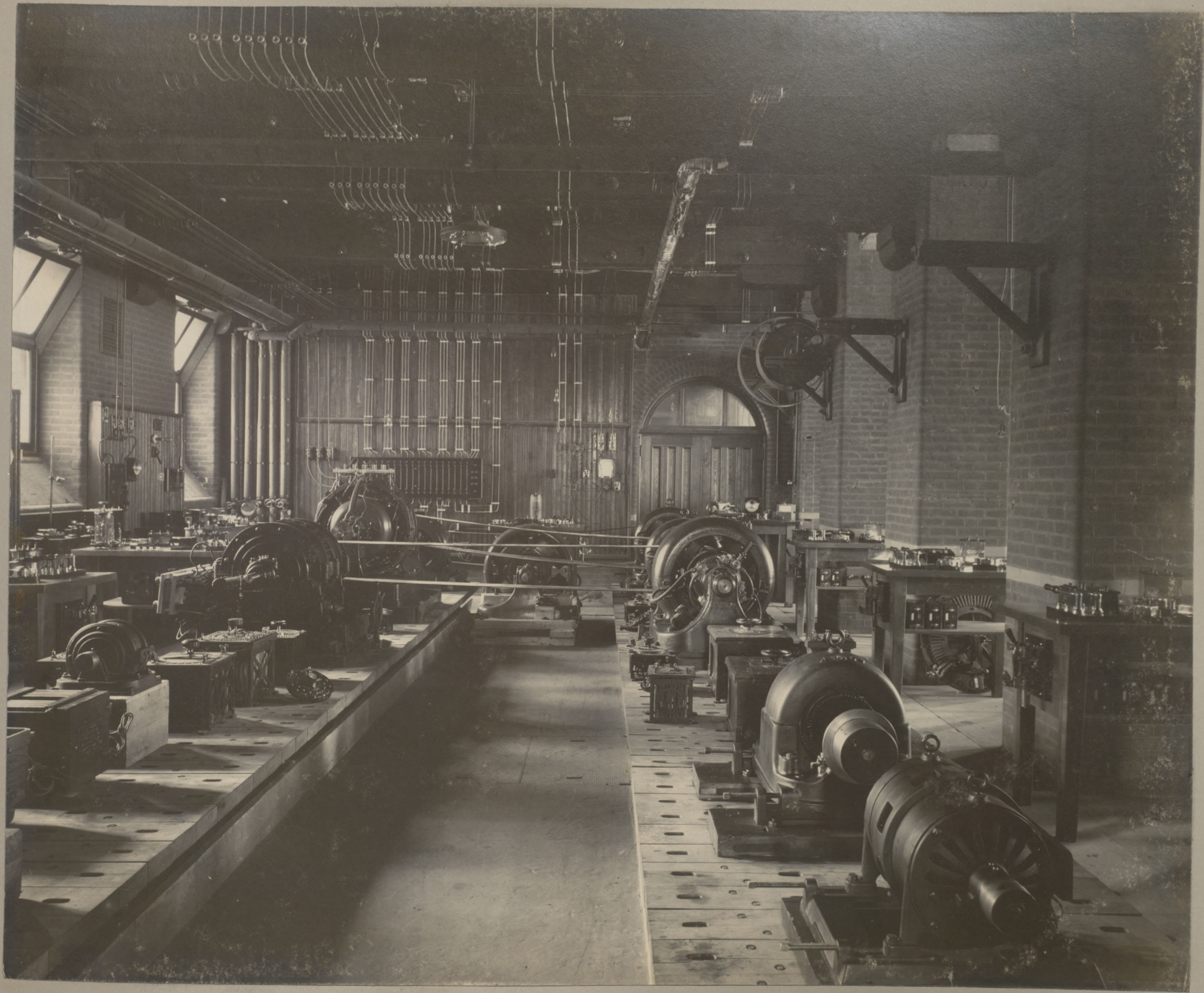


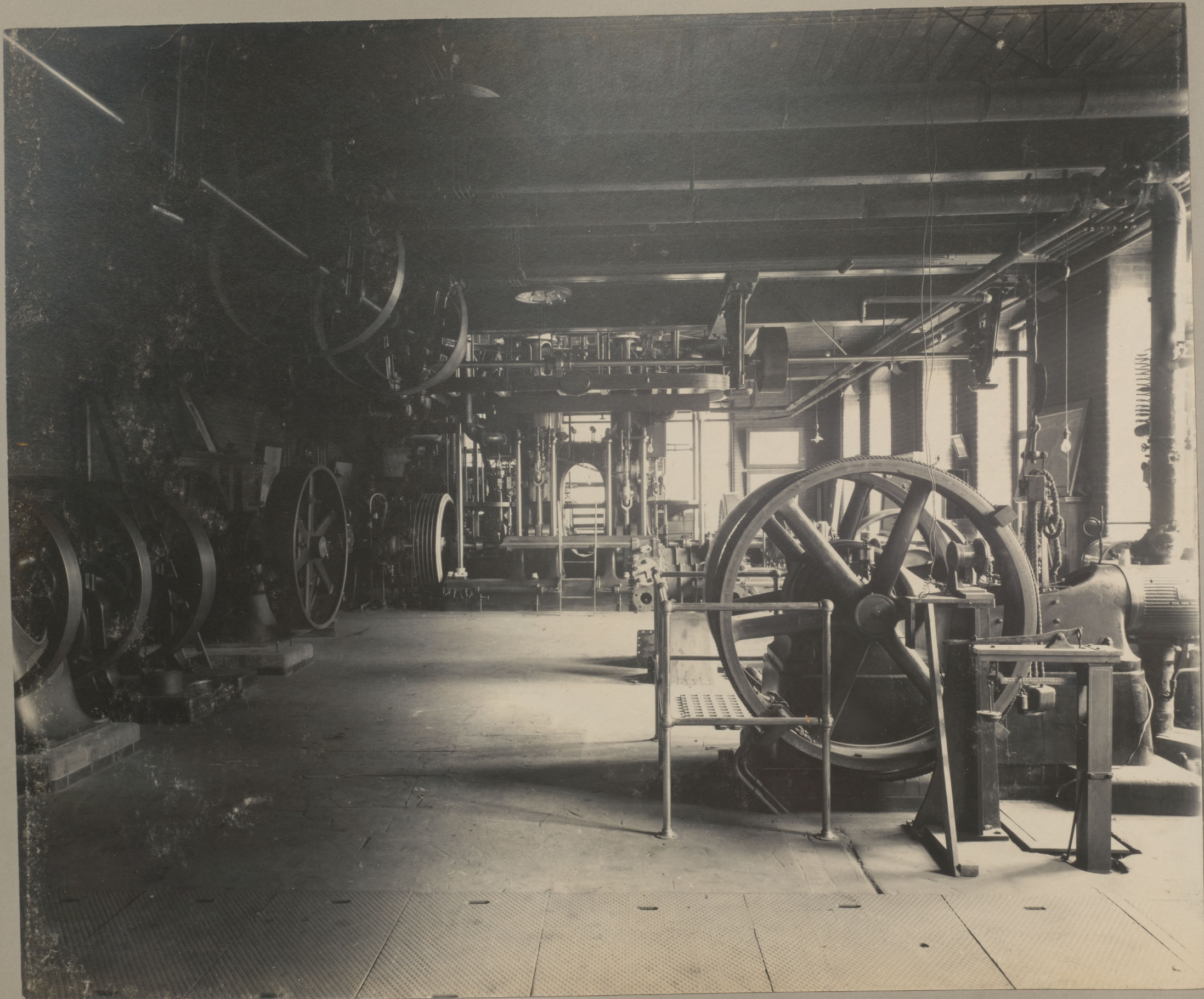








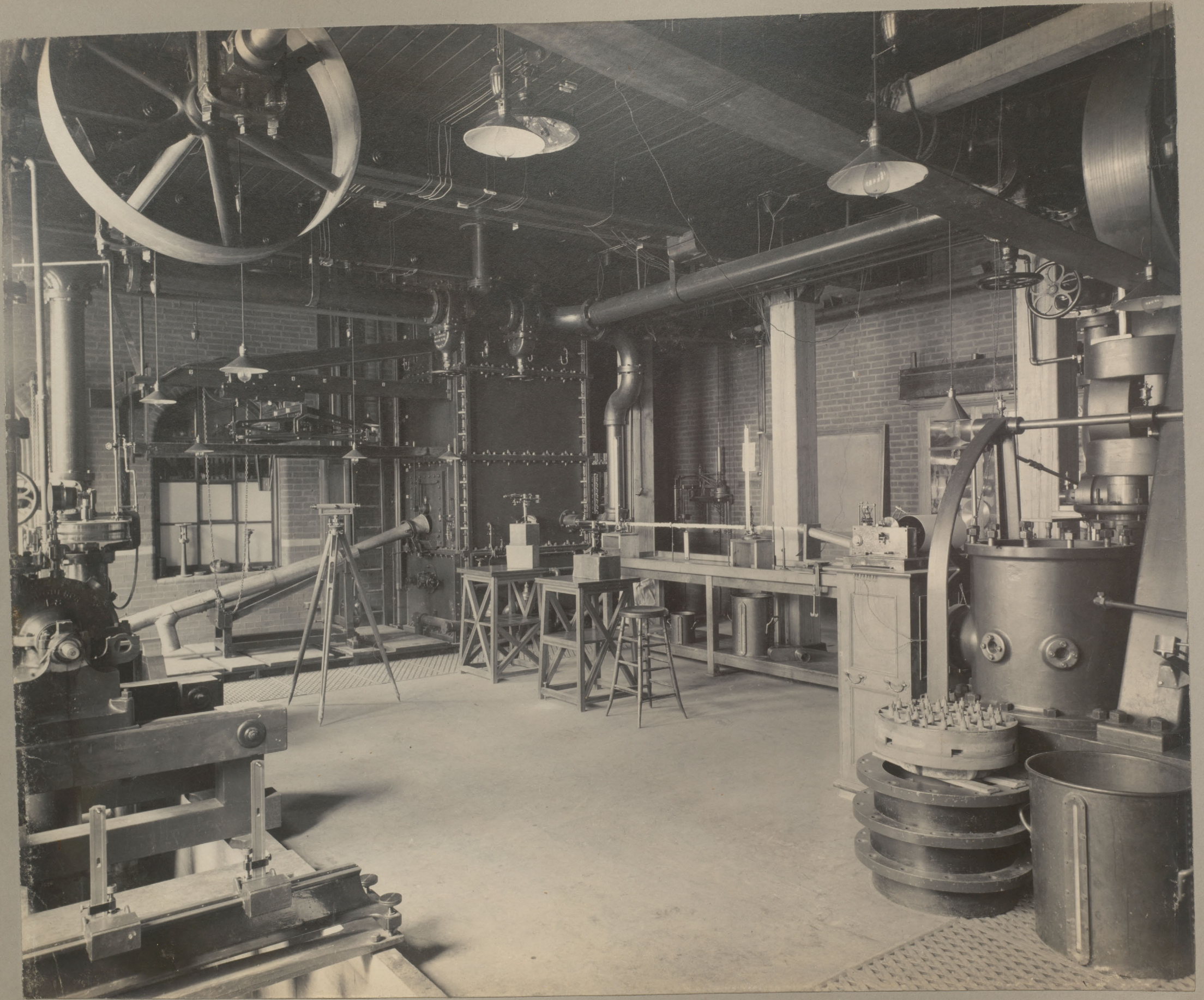




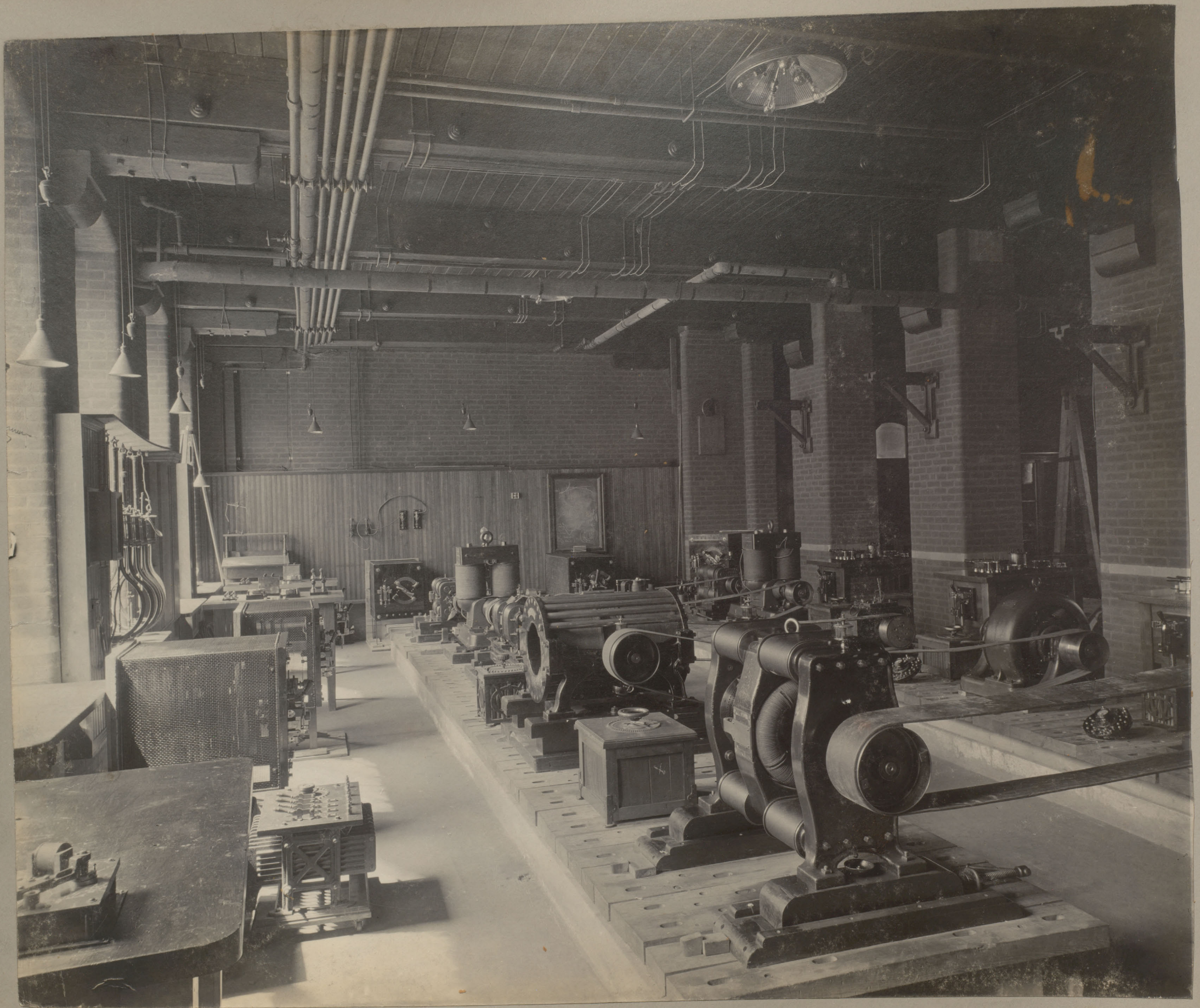


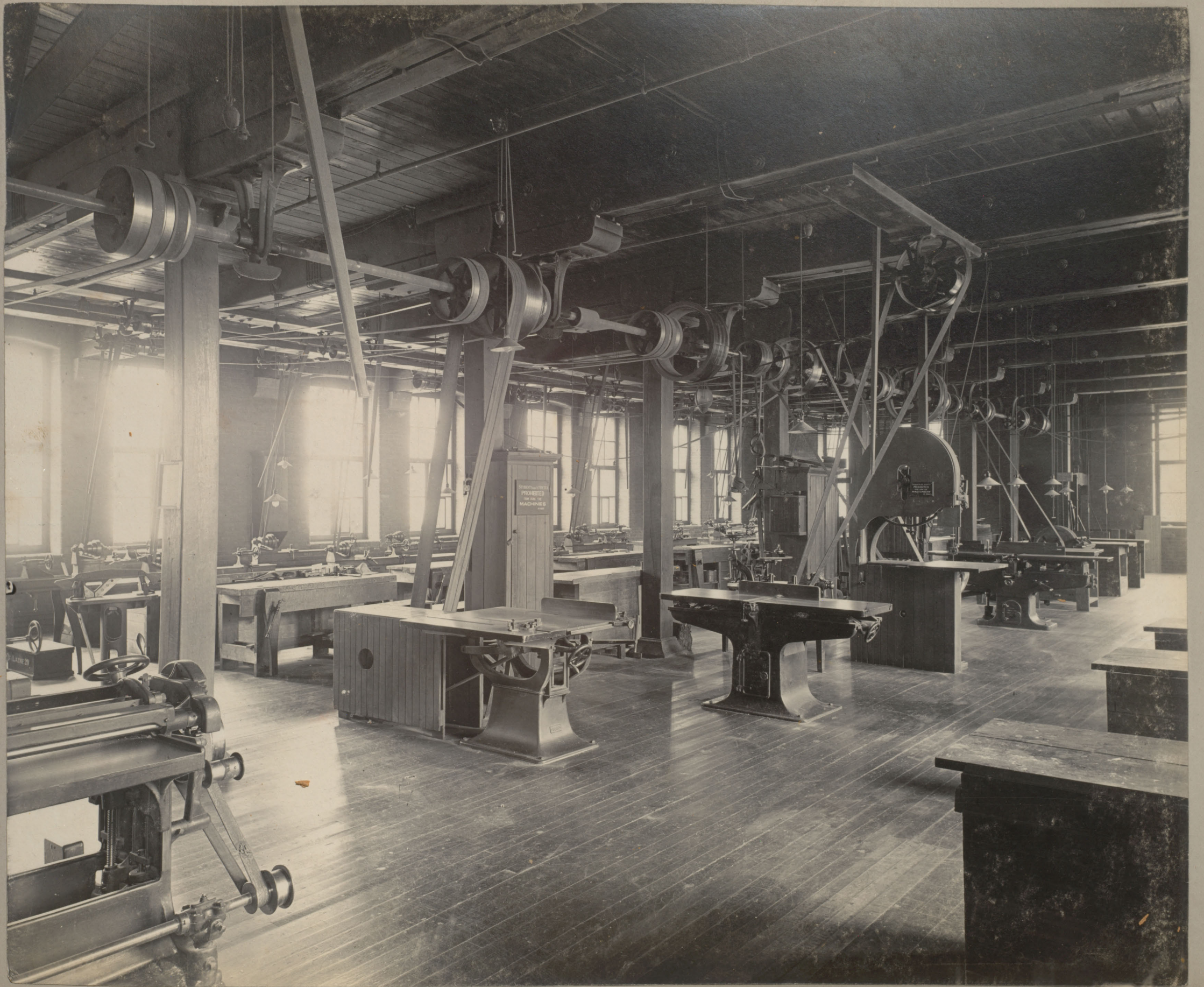


























BEWARE
OF
BIFILAR
WIRES.



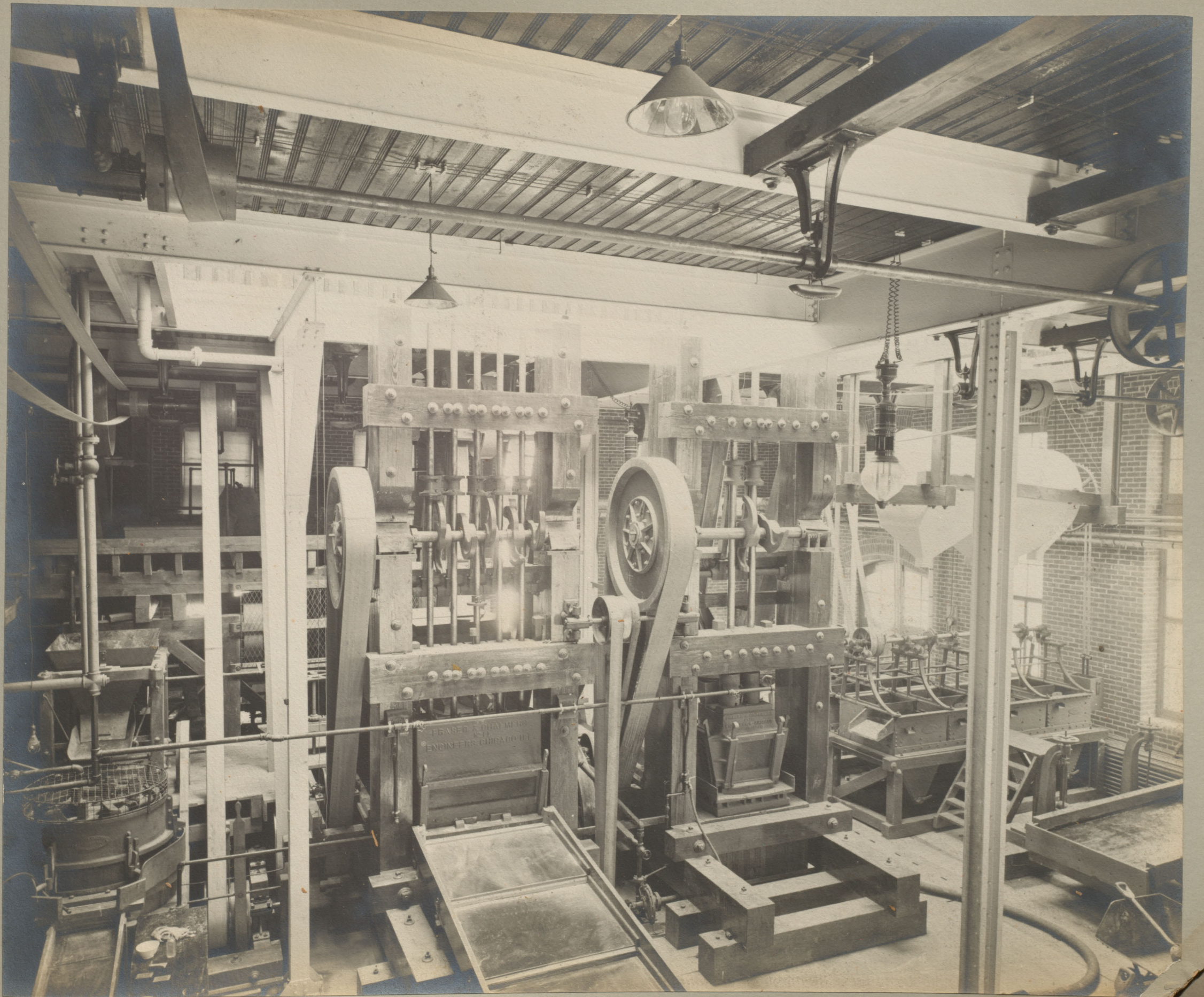




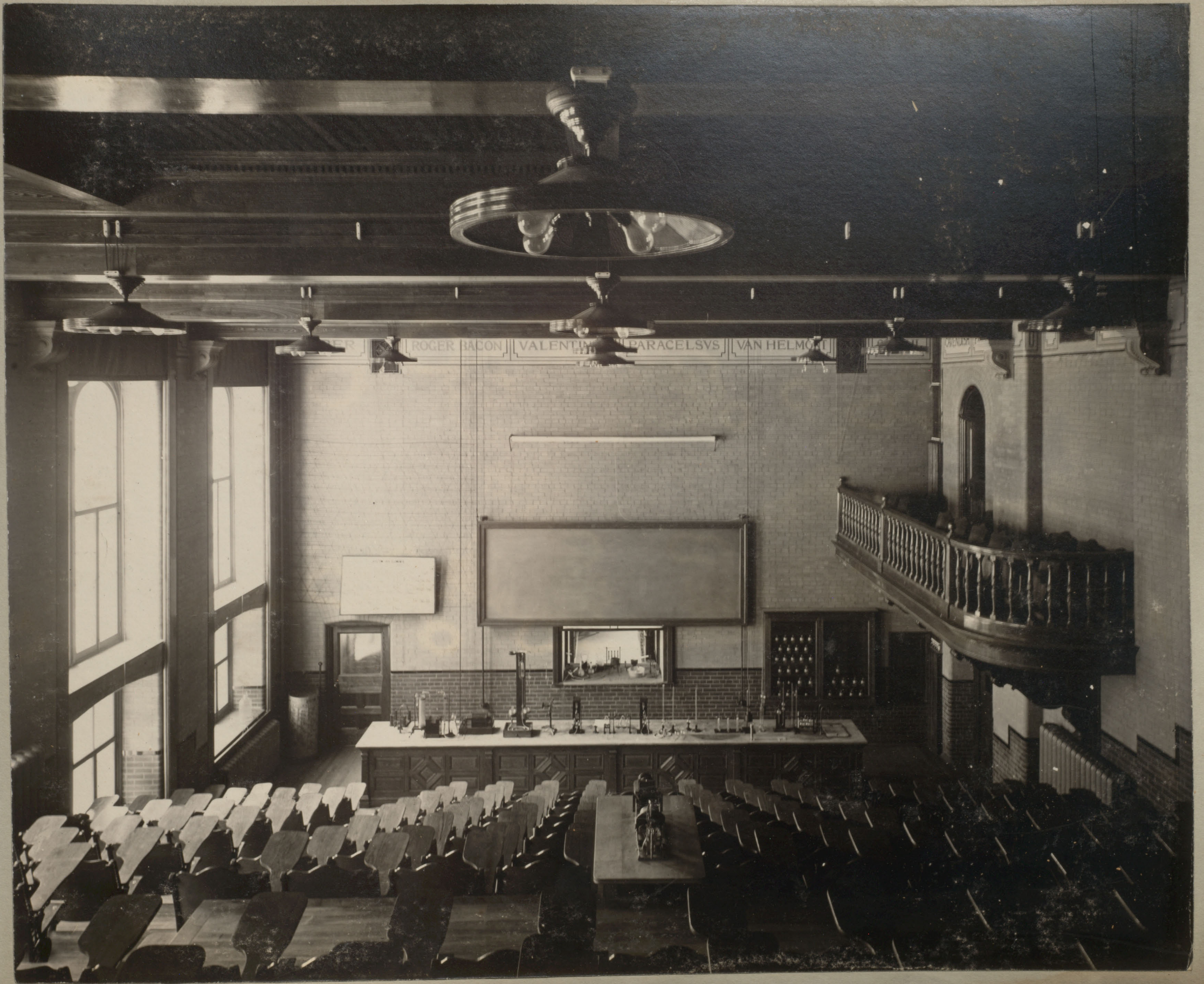




















✓ LE3
M233 P56
1900
Folio

slip behind exhibits

SEP 4 '46

bhk 9008

Gilson Adjustable Album. Extra Leaves for this cover may be had of all dealers, as follows:

| No. | | Per Doz |
|------|---|---------|
| 601 | White Cards | 1.00 |
| 602 | Grey Cards | 1.00 |
| 604C | Grey Leaves with openings for eight 4 x 5 Prints, | 1.50 |

The cover will extend to hold 4 doz. leaves. Order by Number. If you have any difficulty in obtaining Albums or Leaves, write us and we will see that your wants are cared for. Albums are made in all styles and sizes.

Manufactured Solely for **THE CARTER'S INK CO.**, By the F. H. Gilson Co., Patentees.
BOSTON, NEW YORK, CHICAGO, LONDON, BRUSSELS.
U. S. Patents May 6, 1890, and June 22, 1897.
Patented in Great Britain, France, Germany, Belgium, and Canada.

