



HARBOUR COMMISSIONERS OF MONTREAL.

ANDREW ROBERTSON, Esq., CHAIRMAN.
 J. B. ROLLAND, Esq., HUGH McLENNAN, Esq.
 EDWARD MURPHY, Esq., CHARLES H. GOULD, Esq.
 HENRY BULMER, Esq., HOS. J. L. BEAUDRY, (Mayor).
 VICTOR HUDON, Esq., ANDREW ALLAN, Esq.

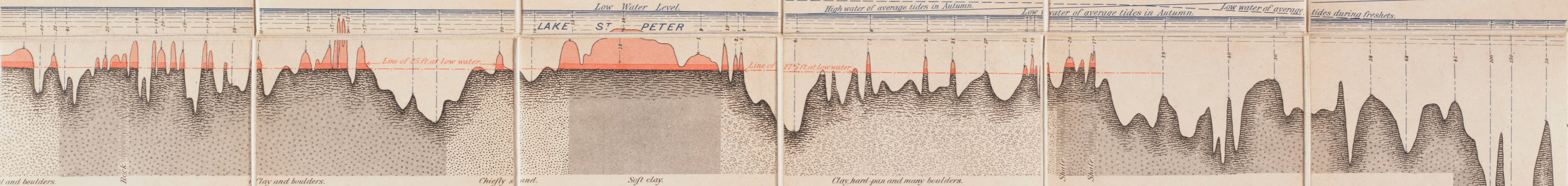
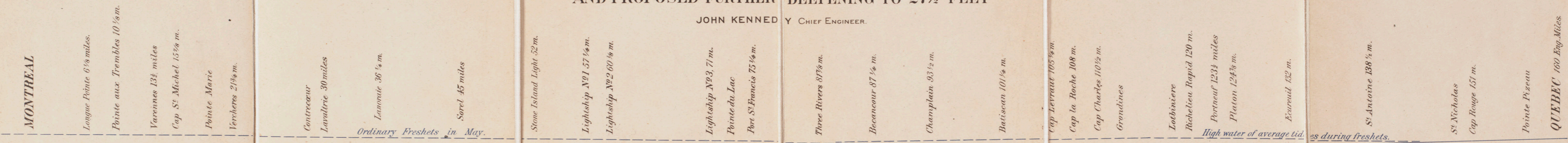
JOHN KENNEDY, M. A. DIST. C. E., Chief Engineer.
 THOS. HOWARD, Harbour Master.
 Capt. THOS. McKENZIE, Superintendent of Dredging.
 A. B. SAVIGNY, Mechanical Engineer.
 JOSEPH LEVELLE, Superintendent of Pilots.

H. D. WHITNEY,
 Secretary and Treasurer

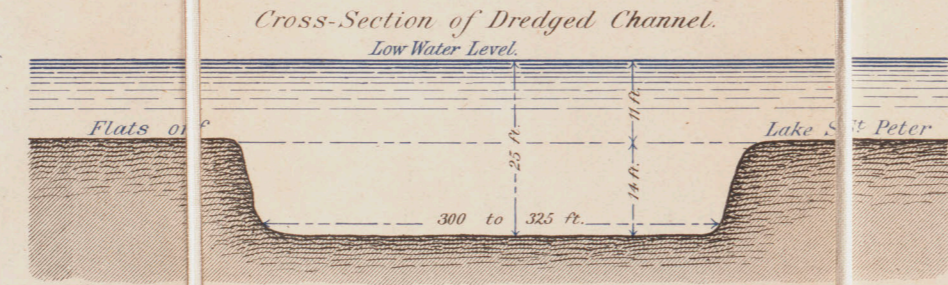
HARBOUR COMMISSIONERS' OFFICES,
 MONTREAL, FEBRUARY, 1883.

HARBOUR COMMISSIONERS OF MONTREAL
 PROFILE OF THE RIVER ST. LAWRENCE BETWEEN MONTREAL AND QUEBEC
 SHOWING THE SHIP CHANNEL AS ALREADY DEEPEMED TO 25 FEET AT LOW WATER
 AND PROPOSED FURTHER DEEPEMED TO 27½ FEET

JOHN KENNEDY, CHIEF ENGINEER.



LAKE ST. PETER
 Cross-Section of Dredged Channel.
 Low Water Level.

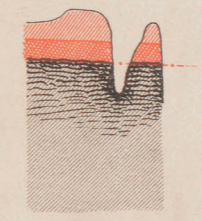


Length of Dredging in Lake St. Peter, 17 1/2 Statute miles.
 Quantity for 25 feet depth, 8,000,000 cubic yards.

SCALES.

Vertical, 30 feet to an inch.
 Horizontal, 6 miles to an inch.

Dredging done to 25 ft. depth at low water shown thus
 Do. yet to be done to 27 1/2 ft. depth. " "



SHIP CHANNEL DREDGING.

Distance from Montreal to Quebec 160 English Statute Miles.
 Dredging the Ship Channel begun in 1844 and continued to 1847.
 Dredging resumed in 1851 and continued to 1868.
 Dredging to attain 25 feet depth resumed in 1875.

Depth of Ship Channel at low water before dredging.....	11 feet
Increase of depth effected up to 1866.....	9 "
Depth attained in 1866.....	20 "
Depth attained in 1878.....	22 "
Depth attained in 1882.....	25 "
Expenditure for 20 feet depth.....	\$1,200,000
Do. do 25 feet do. additional.....	\$1,700,000

PLACES AT WHICH DREDGING HAS BEEN DONE.

26 Foot Channel.	Length of Dredging in English Miles	Gravel and Sand
Montreal Harbour..... 30
Hochelaga..... 22
Pointe aux Trembles Channel..... 3.15
Pouillier Varennes—opposite Varennes..... 15
Varennes to Cap St. Michel..... 1.20
Curve at Cap St. Michel..... 1.35
Pointe Marie.....47
Verchers.....05
Plum Island.....22
Contrecoeur Channel—upper entrance.....51
" " main portion..... 3.10
" " lower portion.....85
He de Grace.....50
Lake St. Peter, including Nicolet Traverse..... 17.47
Port St. Francis.....22
Beauport Traverse and Bend.....32
Champlain Village.....35
Pointe Chamille.....25
St. Ann's Shoal and Cap Levant..... 1.47
Cap la Roche.....93
Pouillier Bay.....17
Cap Charles.....40
Total for 25 feet Channel..... 34.25
20 Foot Channel.		
Lavallée Channel..... 8.00
Total length dredged..... 39.25

In the straight parts of the Channel, between No. 1 and No. 2 Lightships and the White Buoy, Lake St. Peter, the dredging is 325 feet wide; in the straight parts elsewhere it is generally 300 feet, but in bends and all important places it is widened out to 450 feet or more. At all places set at low water, and at Cap la Roche and Cap Charles it is 20 feet with a good average tide. In the Lavallée Channel—which is independent of the 25 feet Channel—the depth is 20 feet at low water.

PLANT EMPLOYED.

Eight Elevator Dredges (single set of buckets, endless chains).
 Two Spoon Dredges (employed part of time).
 Nine Tug Boats.
 Five Coal Tenders.
 Nineteen Hopper Scaws, 80 to 90 cubic yards capacity.
 Four Hopper Scaws, 150 cubic yards capacity.
 Daily capacity of Dredges varies with the nature of work, from 150 cubic yards Shale to 4,000 cubic yards soft Clay.