

L  
II  
2

SOTHEBY & CO.

34 & 35, NEW BOND STREET, LONDON, W. (1)

CATALOGUE

OF

AN IMPORTANT COLLECTION

OF

PAINTINGS

*The Property of*

The Rt. Hon. LORD ALDENHAM

*removed from 37 Portland Place, W.1*

ALSO

FINE PAINTINGS AND DRAWINGS

The Property of Lt.-Col. W. G. Moss ;

The Property of G. H. Emanuel, Esq. ;

The Property of the late Rev. Stopford Brooke ;

The Property of Mrs. Weban ;

and The Property of Lady Duncan.

Day of Sale

WEDNESDAY, THE 24TH OF FEBRUARY,

*inch = 2, 1/2 cm*

1937

# DOMINION GALLERY

1438 SHERBROOKE ST. WEST  
MONTREAL CANADA  
TERMS OF SUBSCRIPTION FOR MESSRS. SOTHEBY'S  
CATALOGUES AND PRICE LISTS FOR ONE SEASON.

The Season opens in October and closes at the end of July.

(All Subscriptions include postage.)

## PLAIN CATALOGUES.

	£	s.	d.
Antiquities .. .. .	0	1	6
Books, MSS. and Autograph Letters .. .. .	0	5	0
Coins and Medals .. .. .	0	2	0
Drawings and Pictures .. .. .	0	2	0
Engravings (Old) .. .. .	0	2	0
Etchings (Modern) .. .. .	0	1	0
Oriental MSS. and Miniatures .. .. .			
Works of Art (including Armour, China, Furniture, Glass, Japanese Colour Prints and Works of Art, Jewellery, Miniatures, Silver, Textiles, etc.) .. .. .	0	5	0
	£1	0	0

## ILLUSTRATED CATALOGUES.

(To include Plain Copies where no Illustrated Catalogues are issued.)

	£	s.	d.
Antiquities .. .. .	0	5	0
Books, MSS. and Autograph Letters .. .. .	2	0	0
Coins and Medals .. .. .	0	5	0
Drawings and Pictures .. .. .	0	15	0
Engravings (Old) .. .. .	0	7	6
Etchings (Modern) .. .. .	0	2	6
Oriental MSS. and Miniatures .. .. .	0	5	0
Works of Art (including Armour, China, Furniture, Glass, Japanese Colour Prints and Works of Art, Jewellery, Miniatures, Silver, Textiles, etc.) .. .. .	1	0	0
	£5	0	0

## PRINTED LISTS OF PRICES AND BUYERS' NAMES.

	£	s.	d.
Antiquities .. .. .	0	10	0
Books, MSS. and Autograph Letters .. .. .	5	5	0
Coins and Medals .. .. .	0	10	0
Drawings and Pictures .. .. .	1	15	0
Engravings (Old) .. .. .	1	15	0
Etchings (Modern) .. .. .	0	15	0
Oriental MSS. and Miniatures .. .. .	0	10	0
Works of Art (including Armour, China, Furniture, Glass, Japanese Colour Prints and Works of Art, Jewellery, Miniatures, Silver, Textiles, etc.) .. .. .	4	0	0
	£15	0	0

CATALOGUE  
OF  
AN IMPORTANT COLLECTION  
OF  
PAINTINGS

*The Property of*  
**THE RT. HON. LORD ALDENHAM**  
*removed from 37 Portland Place, W.1*

COMPRISING

"LES PETITS CHANTEURS" BY A. LE NAIN  
PORTRAITS OF MILTON BY JANSSENS, EDWARD VI BY  
STREETES, RUBEN'S BROTHER BY VAN DYCK,  
DOGE LEONARDO LOREDANO BY TITIAN  
FINE PAINTINGS BY S. VAN RUYSDAEL, RUBENS,  
VAN OSTADE, VAN GOYEN, BREEKELENKAMP, FYT,  
PERUGINO, FRANCA, LO SPAGNA, MURILLO, ETC.  
WATER-COLOURS BY TURNER AND COTMAN

ALSO

FERNELEY'S ORIGINAL PAINTINGS  
FOR COUNT SANDOR'S HUNTING EXPLOITS  
*The Property of a Collector;*

PAINTINGS BY HAYMAN, WOOTTON, KNELLER,  
G. STUART, WATTS, ROSSETTI, BOUDIN

DRAWINGS BY GAINSBOROUGH, TURNER,  
BIRKET FOSTER, DE WINT, GARDNER, MILLET, ST. AUBIN  
OLD MASTER DRAWINGS, ETC.

COMPRISING

*The Property of Lt.-Col. W. C. Moss;*  
*The Property of G. J. Emanuel, Esq.;*  
*The Property of the late Rev. Stopford-Brooke;*  
*The Property of Mrs. Urban;*  
*and the Property of Lady Duncan.*

---

WHICH WILL BE SOLD BY AUCTION

BY MESSRS

**SOTHEBY & CO.**

G. D. HOBSON, M.V.O.

F. W. WARRE, O.B.E., M.C.  
C. V. PILKINGTON.

C. G. DES GRAZ.

Auctioneers of Literary Property & Works illustrative of the Fine Arts.

AT THEIR LARGE GALLERIES, 34 & 35, NEW BOND STREET, W.1

On WEDNESDAY, the 24th of FEBRUARY, 1937

AT ONE O'CLOCK PRECISELY

On View at least Three Days previous.

Catalogues may be had.

**Illustrated Catalogue (8 Plates)—Price 3/6**

A Printed List of all Prices and Buyers' Names at this sale can be  
supplied for two shillings, and for all sales at low subscription rates

## CONDITIONS OF SALE

- I. The highest bidder to be the buyer. If any dispute arise the Auctioneer shall have absolute discretion to settle it ; and to put any disputed lot up again.
- II. No person to advance less than 1s. ; above five pounds 5s. ; and so on in proportion.
- III. All lots are put up for sale subject (a) to any reserve price imposed by the seller and (b) to the right of the seller to bid either personally or else by any one person who may be the Auctioneer.
- IV. The purchasers to give in their names and places of abode, and if required, to pay down 10s. in the pound or more, in part payment of the purchase money ; in default of which the lot or lots purchased may be immediately put up again and re-sold.
- V. All lots are sold as shown with all faults, imperfections and errors of description. Messrs. Sotheby & Co. act as agents ; they have full discretion to refuse any bidding or to withdraw any lot or lots from the sale without in either case giving any reason ; they are not responsible for errors of description or for genuineness or authenticity of any lot or for any fault or defect in it, and make no warranty whatever.
- VI. The lots to be taken away at the buyer's risk and expense, immediately after the conclusion of the sale ; in default of which Messrs Sotheby & Co. will not hold themselves responsible if the same are lost, stolen, damaged or otherwise destroyed, but they will be left at the sole risk of the purchaser, and subject to a charge for warehousing. If, at the expiration of Two Days after the conclusion of the sale, the lots are not cleared or paid for, they may then be sold immediately, either publicly or by private treaty, without any notice being given to the defaulter.
- VII. Upon failure of the buyer to comply with any of the above conditions, the money deposited in part-payment shall be forfeited ; and the defaulter at this sale shall make good any loss arising from the re-sale, together with the charges and expenses in respect of both sales.  
To prevent confusion no purchases can be claimed or removed during the sale.

---

### Messrs. SOTHEBY & Co.

are prepared to execute bids, and in addition to advise intending purchasers as far as possible, if requested by them to do so, without making any charge for either service. Lots will be procured as cheaply as is permitted by other bids or reserves, if any.

34 and 35, New Bond Street, London, W.1.

Telegraphic Address :

" Abinitio, Wesdo, London."

A.B.C. Code, 5th Edition.

Telephone : (3 lines)

Mayfair 6682, 6683, 6684

---

In sending Commissions this Catalogue may be referred to as "TWIG."

COMMISSIONS SENT BY TELEPHONE ARE ACCEPTED ONLY AT THE SENDER'S RISK AND MUST BE CONFIRMED BY LETTER OR TELEGRAM.

CATALOGUE  
OF  
IMPORTANT PAINTINGS,  
&c.

---

---

DAY OF SALE :  
Wednesday, February 24th, 1937

---

DRAWINGS

---

The Property of a Collector

---

Unframed.

DEL GARBO.

- 1 St. Agnes  
*Pen and ink heightened with white on tinted blue paper*  
11in. by 6 $\frac{3}{4}$ in.

\*\* From the Hodges and Carrington Collection.

VERSPRONCK.

- 2 Head of a Man  
*Coloured chalk*  
BATTONI: Portrait of Cecilia Lefroy, Contessa del Medico  
Staffetti  
*Black and white chalk* 2

\*\* The former from the Richardson and F. Murray Collection.

FRANCOIS QUESNEL.

- 3 Madame de Laube-Epine  
*Coloured chalks* 13 $\frac{1}{4}$ in. by 9in.

\*\* From the Collection of Lord Northwick.

Framed.

T. GAINSBOROUGH, R.A.

- 14 Landscape with cattle watering, on the right in the distance a tower  
*Black and white chalk* 10½in. by 13in.  
\*\* From the Rev. Stopford Brooke Collection.

T. GAINSBOROUGH, R.A.

- 15 Wooded landscape with mountains in the distance  
*Black and white chalk* 9¼in. by 12½in.  
\*\* From the Rev. Stopford Brooke Collection.

---

**The Property of Ellen, Countess of Hardwicke**

J. M. W. TURNER, R.A.

- 16 Jerusalem from the Mount of Olives  
*Engraved by J. B. Allen* 5½in. by 8½in.  
\*\* From the Collection of Lady Battersea.  
Mentioned in Rawlinson "The Engraved Work of J. M. W. Turner, R.A.", vol. 2, no. 587.

---

**The Property of Mrs. Heban**

BIRKET FOSTER.

- 17 Preparing for Market, *signed with initials*  
*Water-colour* 6½in. by 9in.

BIRKET FOSTER.

- 18 Cullercoats-on-Tyne, *signed with initials*  
*Water-colour* 8in. by 14in.

Wednesday

7

24th February, 1937

Framed.

BIRKET FOSTER.

- 72 19 The Alhambra, signed with initials  
Water-colour 6½in. by 10in.

BIRKET FOSTER.

- 100 20 Quimpère, Normandy, signed with initials  
Water-colour 10in. by 14in.

J. M. W. TURNER, R.A.

- 100 21 Mountainous Scene, with a city in the middle distance ; effect of  
dusk with lights being lit 9½in. by 11½in.

24.1 x 29.2

J. M. W. TURNER, R.A.

- 140 22 Mountainous Scene with a river spanned by a bridge connecting  
two parts of a village 10in. by 10¾in.

25.4 x 27.3

~~24.1 x 29.2~~

**The Property of Mme. Paul Danse,**

*of Le Havre, France.*

BOUDIN.

- 25 23 Street Scene in a French Village 8½in. by 10½in.

\*\* From the Louveau Collection, Honfleur.

Framed.

## OIL PAINTINGS

---

BOUDIN.

- 40.- 24 A French Coast Town with white cliffs on the right, *bears signature*  
19½in. by 28½in.

BOUDIN.

- 60.- 25 Harbour Scene with shipping, *bears signature* 19½in. by 28½in.

---

### The Property of a Gentleman

---

PETER DE WINT.

- £ 48.- 26 View in North Wales  
*Water-colour drawing* 9½in. by 13in.

GEORGE MORLAND.

- 30 27 A Winter Scene with figures near a farmhouse, *bears signature*  
28in. by 36in.

---

### Various Properties

---

F. SWAINE.

- 40.- 28 Seascape: choppy sea with shipping including a large man-o'-war  
flying the British flag, two brigs in the distance, *signed and*  
*dated 1767* 33in. by 40in.



Wednesday

9

24th February, 1937

Framed.

SCHOOL OF BOUCHER.

- 29 Cupids sporting with fruit 28½in. by 44in.

REMBRANDT (School of).

- 30 Vision of Daniel 52in. by 34½in.

HOARE.

4. 10 31 Portrait of a Lady in blue dress, half length, turned to right  
*Pastel* 23½in. by 17½in.

DANIEL GARDNER.

- 29 32 Portrait Group of the Misses Horneck  
*Chalk and water-colour* 28in. by 21½in.

HAMILTON.

- 33 Portrait of the Duchess of Hamilton ; half length, in white satin  
dress, turned to the left 22in. by 17½in.

SCHOOL OF RAPHAEL.

- 34 St. John the Baptist  
*Panel* 15½in. by 4½in.

ELSHEIMER.

- 4/10 35 The Entombment of Christ  
*En grisaille* 18in. by 13in. 45.7 x 33

Wednesday

10

24th February, 1937

Framed.

RAEBURN.

46 £

- 36 Portrait of a Lady in white with a reddish-brown shawl, half length,  
head to left, landscape distance 27in. by 22in.

SCHOOL OF MORLAND.

- 37 Interior of a Cow-shed 24in. by 29½in.

WILLARTS.

16 £

- 38 A Dutch Harbour Scene with shipping and figures 24½in. by 39in.

62.8 x 99

~~12/8~~

---

The Property of Lt. Col. W. G. Moss

*The Manor House, Sonning on Thames.*

---

D. G. ROSETTI.

300.-

- 39 La Donna della Finestra (Vita Nuova di Dante) : half-length of a  
lady seated, in thought, her arms resting on a window ledge,  
*signed and dated 1879* 40in. by 30in.

101.5 x 76.2

- \*\* Exhibited at the Southport Centenary Exhibition, 1892.  
Exhibited at the New Gallery Winter Exhibition, 1897-98.  
Exhibited at the Wolverhampton Art and Industrial Exhibition,  
1902.  
Exhibited at the City of Manchester Art Gallery Autumn  
Exhibition, 1911.

MIGNARD.

4

- 40 Portrait of a young Man, half length, turned to the right  
30in. by 25in.

Wednesday

11

24th February, 1937

Framed.

G. F. WATTS, R.A.

- 41 "When Poverty comes in at the door Love flies out of the window",  
*signed* 20½ in. by 26 in.
- \*\* Exhibited at the Southport Centenary Exhibition, 1892.  
Exhibited at the New Gallery Winter Exhibition, 1896-97.  
Exhibited at the Works of G. F. Watts Exhibition.  
Exhibited at the Royal Academy Winter Exhibition, 1905.

BREUGHEL.

- 18.- 42 Madonna and Child in a landscape surrounded by infant Angels  
dancing 19 in. by 26 in. 48.3 x 66

FLEMISH SCHOOL, circa 1500.

- 120.- 43 The Crucifixion  
Panel

23 in. by 14½ in. 58.4 x 36.8

CARLO DOLCI (after).

- 5/10 44 Salome with the head of St. John the Baptist

18 in. by 15 in. 45.7 x 38.1

ZUCCARO.

- 45 Portrait of a Gentleman, bust, holding a surgical instrument, a box  
containing other instruments on the table 20 in. by 16 in. 50.8 x 40.7

\*\* Formerly in the Old Church House, Canterbury.

Framed.

**The Property of a Lady**

ENGLISH SCHOOL.

4. - 46 Portrait of Sir John Campbell in uniform with tartan sash, three-quarter length turned to the left 38in. by 48in.

GILBERT STUART.

260. - 47 Portrait of Edmund Sexton, Viscount Pery, three-quarter length, turned to the right, seated in a chair covered with a green cloth, at a table on which his hands rest, the right hand holding an open letter; he wears a brown coat with white neckcloth and powdered hair tied with a large queue bow; two books are standing on the table leaning against a wall, and another paper, rolled, is lying on the table 36in. by 28in.

**The Property of the Rt. Hon. The Earl of Essex**

ENGLISH SCHOOL.

2. - 48 Portrait of Henry VII 21½in. by 16in.  
\*\* Exhibited at the Tudor Exhibition, New Gallery, 1890.

ENGLISH SCHOOL.

8. - 49 Portrait of Elizabeth of York, daughter of Edward IV and wife of Henry VII  
Panel 21in. by 16in.  
\*\* Exhibited at the Tudor Exhibition, New Gallery, 1890.

Framed.

J. WOOTTON.

- 88- 50 Hunting Scene : The Earl Coningsby and his favourite horse in Hampton Court Park, Herefordshire : composition of four figures, three horses and hounds, on the left Lord Coningsby standing next to his favourite hunter held by a groom 48in. by 61in.

SIR GODFREY KNELLER.

- 90- 51 Portrait group of William, third Earl of Essex (died 1718) and his sisters, the Ladies Betty and Mary Capel : composition of three full-length figures ; background of architecture and scenery, signed 71in. by 57in.

---

The Property of G. J. Emanuel, Esq.

---

FRANCIS HAYMAN, R.A.

- 85- 52 " The Hallett Family " : composition of seven figures with landscape background, on the left an aged couple seated on chairs, on the right a younger couple ; in the centre foreground a gentleman with his wife and infant child seated on the ground, the first-mentioned stroking a dog 64in. by 68in.

\*\* Formerly in the possession of the Hallett family, late of Finedon Hall.

[See ILLUSTRATION]

---

Framed.

## The Property of a Collector

JOHN E. FERNELEY.

### COUNT SANDOR'S HUNTING EXPLOITS IN LEICESTERSHIRE

1350.-  
53 A set of ten subjects as follows :

- kleine jagdbilder*
- a. Count Sandor floored in the street of Melton Mowbray
  - b. Count Sandor charges a gate breaking every bar in it
  - c. Count Sandor leaps over Sir James Musgrave, horse and all
  - d. Count Sandor in a Brook
  - e. Count Sandor having charged a large fence is displaced from his saddle
  - f. Count Sandor, helped by Tom Wilkins the Whipper In, is saved from being drowned in the Vale of Belvoir, *fully signed and dated 1831*
  - g. Count Sandor clears a flock of sheep, a stile and a long foot-bridge
  - h. Count Sandor falls headlong from his horse Cruiser
  - i. Count Sandor on his horse Nimrod clears a large ox-fence
  - j. Count Sandor rides at a gate on the swing, and gets a harmless but very dirty fall ; *signed with initials*  
*each picture 9½in. by 13½in.* 24.1 x 34.3

"Count Sandor was a Hungarian Nobleman who spent one season at Melton Mowbray, on a visit to Lord Alvanley. His daring horsemanship together with the ensuing mishaps, were the provocation to many a merry laugh over the Melton dinner tables, at the time and long after."—Siltzer : *The Story of British Sporting Prints.*

"The Count, as might be expected, was at first rather green at the work of riding across country, and his earliest efforts were productive of considerable merriment to the Meltonians of the day, nevertheless he bore all his mishaps with the greatest good humour, and, so far from feeling offended at the consequence, he commissioned Mr. Ferneley, the celebrated painter of Melton, to depict him in several of the most ludicrous and hazardous positions that it fell to his lot to occupy during the season : a commission that Mr. Ferneley executed with great ability, in a series of ten pictures, which the Count took back to his seat at Bais, in Hungary."—Ackermann's Advertisement of the prints.

The above set comes from the Count Sandor's castle in Austria, and is sold in the original frames with descriptions on the backs.

This is the famous set engraved by E. Duncan and published by Rudolph Ackermann in 1833.

[See ILLUSTRATION OF (j)]

Wednesday

15

24th February, 1937

Framed.

### Various Properties

#### FLEMISH SCHOOL.

- 10.- 54 St. Peter and St. Paul embracing, signed with monogram incorporating three H's  
Panel 21½ in. by 11½ in.

#### SCHOOL OF ANTWERP.

- 11.- 55 The Deposition of Christ  
Panel 17½ in. by 13 in.

#### VANVITELLI.

- 8.- 56 Rome: the Square of St. Peter  
13 in. by 21½ in.

#### UNKNOWN.

- 5.- 57 Portrait of a Lady, said to be Mary, Queen of Scots  
27½ in. by 21½ in.

#### RUBENS.

- 11.- 58 The Coronation of the Virgin  
Copper 28 in. by 21½ in. 21.1 x 54.6

#### NETHERLANDISH SCHOOL.

- 42.- 59 Japhtas Vow  
Panel 15 in. by 72 in. 38.1 x 183

Wednesday

16

24th February, 1937

Framed.

RUBENS.

- 5- 60 Death of Seneca  
Panel 24in. by 17in. 61 x 43, 2

DANIEL GARDNER.

- 61 The Earl of Stair as a boy, in highland dress  
Pastel and water-colour 31in. by 22in.

HEDA.

- 56- 62 Still Life : Fruit, goblets, a plate with a nautilus shell, etc., on a  
table  
Panel 18in. by 24in.

RUBENS (after).

- 9- 63 A Lion Hunt 47in. by 66in.

VAN DYCK (after).

- 15- 64 Queen Henrietta Maria, three-quarter length in white satin dress,  
holding a rose 46in. by 37in.  
\*\* From Hengrave Hall, Suffolk.

CORREGGIO.

- 3/10- 65 A Cherub 24½in. by 24in. 62, 3 x 61

TENIERS.

- 13- 66 Family Group with a woman reading outside a building  
Panel 21in. by 27in. 53, 3 x 68, 5



Wednesday

17

24th February, 1937

Framed.

RUYSDAEL.

- 14.- 67 Landscape with a convent on a hill and a torrent below  
24½in. by 19½in. 62.3 x 49.5

EARLY SPANISH SCHOOL.

- 68 Head of Christ 20in. by 15½in.

FLEMISH SCHOOL.

- 5 69 Portrait of a Gentleman in black, standing by a table, his left hand  
resting on a skull  
Panel 22in. by 16in. 53.9 x 40.6

SIR A. VAN DYCK.

- 100.- 70 Portrait of a Gentleman in black, holding a scroll, three-quarter  
length, head turned to right 42in. by 32in. 106.6 x 91.3

---

**The Property of Lady Duncan**

51, Bryanston Sq., W.1.

---

ITALIAN SCHOOL (17th Century).

- 25.- 71 Portrait of Jacopo Benaglio, full-length standing, turned to the  
right, with inscription 76in. by 41in.

FRENCH SCHOOL.

- 22.- 72 A pair of Flower Pieces 67in. by 32in. 2

Wednesday

18

24th February, 1937

Framed.

SCHOOL OF BAPTISTE.

7. 73 Flower Piece 32in. by 56in.

CAMPIDOGGIO.

8.- 74 Still Life : Fruit 33½in. by 46in.

FRENCH SCHOOL.

2.- 75 Landscape with figures 30in. by 43in.

DUTCH SCHOOL.

8.- 76 Three Landscapes 3

ITALO-BYZANTINE SCHOOL.

3.- 77 Madonna and Child with two Saints  
Panel 18in. by 25in.

EDOUARD FRERE.

38.- 78 The Washing Day, signed and dated 1870 20in. by 17in.

UNKNOWN.

11.- 79 Two Flower Pieces  
A pair 17in. by 15½in.

Framed.

FLORENTINE SCHOOL.

- 80 The Crucifixion  
Another  
Panel 2

COELLO.

- 81 Portrait of a Lady, bust, in rich brocade dress 26½in. by 19in.

---

---

Another Property

PILLEMENT.

- 82 River Scene 18in. by 31½in.

HAMILTON.

- 83 Charity, co-heiress of the Rt. Hon. Henry Singleton, P. C. of Aclare,  
and wife of Sir William Yorke, D.S.P.  
Pastel 22in. by 17in.

DANIEL GARDNER.

- 84 Portrait of Miss Farren, full length, in white, standing by an organ  
in which is a piece of music  
Pastel and water-colour 33in. by 21in.

DANIEL GARDNER.

- 85 Henry Lord Stowel, full length, in a landscape with a dog  
Pastel and water-colour 34½in. by 22½in.

HORREMANS.

- 86 Preparing for market 26in. by 33in.

Framed.

The Property of  
**THE RT. HON. LORD ALDENHAM**  
*removed from 37 Portland Place, W.1*

---

**WATER-COLOUR DRAWINGS**

---

J. S. COTMAN.

87 Seascape with shipping, *signed* 9in. by 12½in.

Cox.

88 Wooded Landscape  
*Water-colour* 10½in. by 14½in.

H. M. MARSHALL.

89 Coast Scene, *signed and dated* 1879  
and two Others  
*Water-colours* 3

HENRY R. NEWMAN.

90 Philae, *signed and dated* 1899  
*Water-colour* 26in. by 39in.

D. ROBERTS, R.A.

91 A Street in Cairo, *signed and dated* 1838  
*Water-colour* 19½in. by 12¾in.

Framed.

J. M. W. TURNER, R.A.

- 92 Sunset over a city  
*Water-colour* . . . . .  $6\frac{1}{2}$ in. by  $8\frac{3}{4}$ in.

TURNER.

- 93 Coast Scene  
*Water-colour* . . . . .  $6\frac{3}{4}$ in. by 9in.

LOUISA MARCHIONESS OF WATERFORD.

- 94 Portrait of the young King of Spain, *signed with initials and dated*  
1889 . . . . . 11in. by  $8\frac{1}{2}$ in.

---

OIL PAINTINGS

---

C. ALEXANDER.

- 95 Portrait of Adrian Hope of Amsterdam, 1709-1781, half length in  
dark dress, turned to the right  
*In feigned oval* . . . . .  $29\frac{1}{2}$ in. by 24in.

C. ALEXANDER.

- 96 Portrait of John Hope of Amsterdam, 1737-1784, married Philippina  
Barbara van der Hoven, 1763, half length turned to the right  
*In feigned oval* . . . . . 30in. by 25in.

Framed.

C. ALEXANDER.

- £ 6 97 Portrait of Mrs. John Hope, half length, seated in pink dress and green velvet skirt, holding a book, pink bows in her hair  
30in. by 25in.

ADAM VAN BOERSOM.

- £ 105 98 A View on the Rhine, with a fort at the junction of two rivers,  
*signed*  
34½in. by 39in.

Q. BREKELENKAMP.

- £ 200.- 99 Interior with an old woman seated asleep by a table on which are a bowl of soup and a piece of bread and cheese, *signed and dated 1662*  
*Panel*  
16in. by 13in. 40.7 x 33

\*\* Bought in 1840 from the collection of Monsieur Schamp d'Aveschoot (No. 214).

[See ILLUSTRATION]

CARRENO.

- £ 105.- 100 Portrait of the Infanta Maria Theresa of Spain, half length, in brocade dress  
*Feigned oval*  
22½in. by 18in.

\*\* Bought at Pearce's Sale, 1872.

Exhibited at the Grafton Galleries, Fair Children Exhibition, 1895, No. 66.

CONSTABLE.

- £ 105.- 101 View of Windsor Castle from the Brocas  
48in. by 73in. 122 x 185 1/4  
\*\* From the Pearce Sale, 1872 (No. 250).

T. S. COOPER.

- 102 Landscape with sheep  
9½in. by 12in.

PEETER SNAYERS.

- £ 13.- 103 A Cavalry Battle, *signed*  
33in. by 48in. 82.7 x 122

Framed.

SIR A. VAN DYCK.

LOT 104

Portrait of Philip Rubens, brother of Peter Paul Rubens, half  
length turned to the right, holding in his left hand a glove  
*In feigned oval* 26½ in. by 22½ in.

\*\* Bought in 1840 from the collection of Monsieur Schamp d'Aves-  
choot.

Exhibited at the Guildhall, 1890, No. 73.

[See ILLUSTRATION]

£ 300.-

67138572

92.12  
92.7  
18.52

Framed.

## ENGLISH SCHOOL

- 145- 105 Portrait of Queen Mary Tudor, bust, in brocade dress, turned to the left  
18in. by 13in.

## FRANCESCO FRANCA.

- 70.- 106 Madonna and Child : three-quarter length of the Madonna seated, supporting on her lap the Infant Christ who is holding a gold-finch  
mässig Panel  
31½in. by 26in.

\*\* Bought at Rome in 1896, from the collection of Count Cini.  
Exhibited at Burlington House, Old Masters, 1886, No. 192.  
Exhibited at the Guildhall, 1890, No. 47.  
Exhibited at the Burlington Fine Arts Club, 1894, No. 27.

## GIACOMO FRANCA.

- 50.- 107 Madonna and Child with the Infant St. John  
mässig Panel  
25in. by 21in.

\*\* Bought at Rome in 1846 from the collection of Count Cini.  
Exhibited at the Guildhall, 1890, No. 37.  
Exhibited at the Burlington Fine Arts Club, 1894, No. 26.

## JAN FYT.

- 145.- 108 Dogs and Dead Game ; a greyhound is seen in a landscape next to some dead game and a gun, another dog is seen on the left, signed and dated 1646  
47in. by 62in. 119,4 x 157,4

\*\* Purchased from Bailey, Antwerp, 1840.  
Exhibited at the Guildhall, 1890, No. 64.  
Exhibited at the Exhibition of Flemish Art of the 17th Century, Brussels, 1910.



Framed.

JAN VAN GOYEN.

109 River Scene in Holland with boats

Panel

12½ in. by 21½ in.

31, 7X 57, 6

\*\* From Mr. John Heugh's Collection, 1878.

LOUIS HAGHE.

110 The Retro Choir of Santa Maria Novella at Florence, *signed and dated* 1855

42½ in. by 60 in.

\*\* Purchased from the Bicknell Collection in 1863.  
Exhibited at the Guildhall, 1890, No. 2.

26.7  
78.2  
157.4

~~59.7  
59.7  
119.4~~

Framed.

CORNELIUS JANSSENS.

Lot 111

480. -

Portrait of John Milton, aged 20, half length turned to the right, in tufted black doublet slashed with white and full ruff edged with lace, inscribed below on the left "*J. Milton an: aet. suae 20*"; signed with initials "*C. J.*" fecit and dated 1627 on the right  
Panel

29in. by 24in. 73.7 x 61

\*\* Janssens is known to have painted a portrait of Milton at the age of 10, now in the Pierpont Morgan Collection. There was also a portrait done by Janssens of Milton at the age of 20, which was sold in 1828 at the sale of Lord Onslow's Pictures, and has since disappeared. A copy of it is in the possession of Lord Harcourt; the present picture offers some variation from it, e.g., in the dress. It may be noted that the colour of the hair in the present picture agrees with that of Milton; cf. C. G. Williamson's "Prints, Portraits and Writings of J. Milton, 1908-1933".

See Aubrey's "Brief Lives" (edition John Collier):

"He had abroun hayre. His complexion exceeding faire. Ovall face. His eie a darke gray . . . . . His widowe haz his picture, drawne very well and like, when a Cambridge schollar, which ought to be engraven; for the pictures before his bookes are not at all like him."

[See ILLUSTRATION]

Framed.

ANTOINE LE NAIN.

*sehr gutes Bild* LOT 112

1100.-

Les Petits Chanteurs : on the right a boy singing accompanied on the guitar and kit by two other boys dressed respectively in red and blue ; the figures are grouped round a table on which are a book of music, a candlestick, a mug, a glass and a clay pipe ; in the foreground a dog

11½ in. by 15½ in.

29.3 x 39.3

\*\* From the Holderness Collection, 1861.

Exhibited at the British Institution, 1863, No. 8.

Exhibited at the Guildhall, 1898 (No. 66).

Exhibited at Whitechapel, 1907 (No. 130).

Exhibited at the Burlington Fine Arts Club, 1910 (No. 1).

Exhibited at the Royal Academy Exhibition of French Art, 1932 (No. 107).

Mentioned in :

A. Valabrègue, "Les Frères Le Nain", 1904, p. 169, and reproduction; R. C. Witt, "The Brothers Le Nain" (Burlington Fine Arts Club), 1910, p. 21, and reproduction.

Jamot, "Les Le Nain", 1929, p. 31.

[See FRONTISPIECE]

Framed.

HENDRIK VAN LINT.

- 5.- 113 Classical Landscape with the Rape of Europa 37in. by 52in.  
 \*\* Bought in Rome in 1842.  
 Exhibited at the British Institution, 1863, No. 83.  
 Exhibited at Leeds, 1868, No. 780.

HENDRIK VAN LINT.

- 15.- 114 Rome : The Arch of Constantine  
 The Arch of Drusus  
 A pair 11½in. by 8½in. 2  
 \*\* Bought at Rome in 1842.

MAES.

- 360.- 115 Boys flying kites  
 Panel 17½in. by 13½in. 44.5 x 37.3  
 \*\* Bought in 1840 from the Schamp d'Averschoot Collection.

MURILLO.

- 77.- 116 The Vision of St. Anthony of Padua 36in. by 43in.  
 \*\* Bought in Chiclana in 1854, from the heirs of Senor Espelosin,  
 of Madrid.  
 Exhibited at Leeds, 1868 (No. 362).  
 Curtis, Murillo (No. 245).

PATRICK NASMYTH.

- 34.- 117 Wooded Landscape with cattle watering 8in. by 6½in.

Framed.

## ADRIAEN VAN OSTADE.

- 118 The Guitar Player  
Panel

10in. by 7½in.

25.4 x 19.1

\*\* Bought in 1840 from the collection of Monsieur Schamp d'Aveschoot (No. 239).

Exhibited at the Guildhall Art Gallery, 1890, No. 74.  
Hofstede de Groot, No. 105.

## PIETRO PERUGINO.

- 119 Madonna and Child : three-quarter-length of the Madonna seated on a ledge supporting in her lap the Infant Christ ; landscape distance

13½in. by 11½in.

34.3 x 29.3

\*\* Bought at Rome by Archdeacon Julius C. Hare, and from the latter's family in 1864 by H. H. Gibbs.

Exhibited at Burlington House, Old Masters, 1886, No. 176

Exhibited at the Guildhall 1890, No. 38.

Exhibited at the Exhibition of Early Italian Art, New Gallery, 1893-94 (No. 208).

## PETER PAUL RUBENS.

- 120 Study of a Macaw  
Panel

18½in. by 15in.

47 x 38.1

\*\* Bought in 1840 from the Schamp d'Aveschoot Collection (No. 220).

Exhibited at Leeds, 1868, No. 594.

Framed.

SOLOMAN VAN RUYSDAEL.

LOT 121

1050.- River Scene in Holland : in the foreground the river with fishermen  
in boats, trees on the bank in the middle distance, and in the back-  
ground a church spire and a village 40in. by 54in. 101.5 x 137.2

\*\* Bought in 1840 from the collection of Monsieur Schamp  
d'Aveschoot.

[See ILLUSTRATION]

Framed.

SASSOFERRATO.

122 Mater Dolorosa 20in. by 15in.

\*\* Bought in 1842 from the collection of the Marchese Venuti.

GIOVANNI LO SPAGNA.

123 St. John the Evangelist, full length standing, looking up to a celestial vision, turned to the left, a lily and a book in his left hand, and a pen in his right  
*Panel, circular top* 51in. by 21in.

\*\* Bought in Rome in 1846 from the collection of Count Cini.  
Exhibited at Burlington House, Old Masters, 1886, No. 200.  
Exhibited at the Burlington Fine Arts Club, 1906, No. 16.

CLARKSON STANFIELD.

124 View of Angers sur Marne, *signed and dated 1860* 15in. by 24in.

68.6  
68.5  
-----  
137.2

Framed.

GUILLIM STREETES.

LOT 125

Portrait of King Edward VI: bust, turned to the left, in black satin dress with gold embroidery, small embroidered collar, black hat set with jewels

*Panel*

19½in. by 16½in.

\*\* This portrait was formerly in the possession of the Cokaynes, Lords Cullen of Rushton Hall, in Northampton, and descended to the last of the name, the Honourable Elisabeth Pery, a relation of the present owner's family at whose sale it was acquired in 1884.

Exhibited at Burlington House, Old Masters, 1886, No. 183.

Exhibited at the Guildhall, 1890, No. 50.

Exhibited at the New Gallery, Monarchs of Great Britain Exhibition, 1902, No. 60.

Exhibited at the Burlington Fine Arts Club, 1909, No. 63.

[See ILLUSTRATION]



Framed.

TITIAN.

- 126 Portrait of the Doge Leonardo Loredano: half length in profile to the right and wearing Doge's robes and cap, background of red drapery and architecture, with a galley on the distant sea.; above on the right the Loredano arms with the initials *L.L.*, and the date MDXX 34½in. by 28in.

\*\* Leonardo Loredano, a famous portrait of whom, by Giovanni Bellini, is in the National Gallery, became a Doge in 1501 and died in 1521, thus the present picture was painted a year before his death.

Bought in 1879 of Federigo della Rovere.

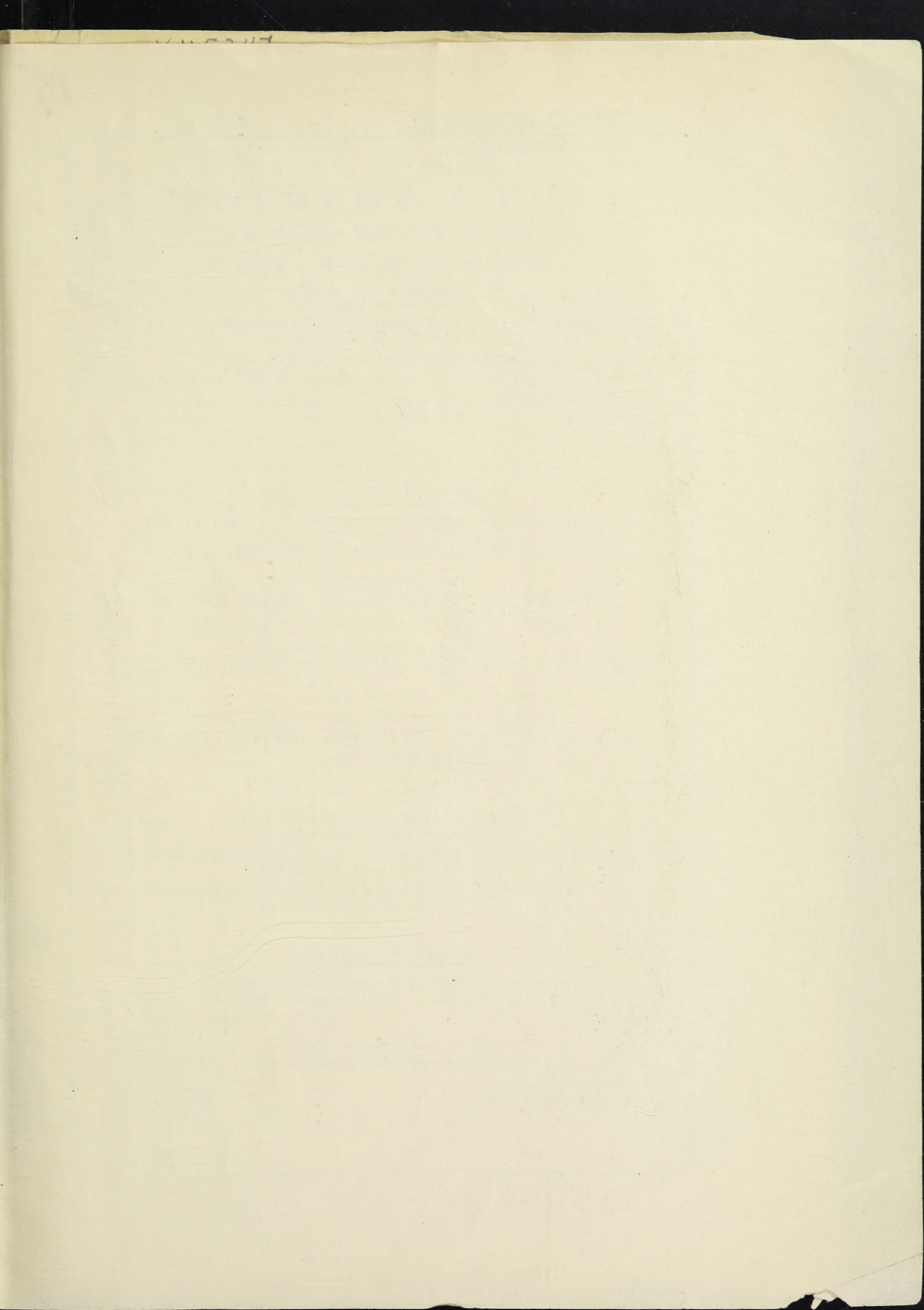
V. VISPRÉ.

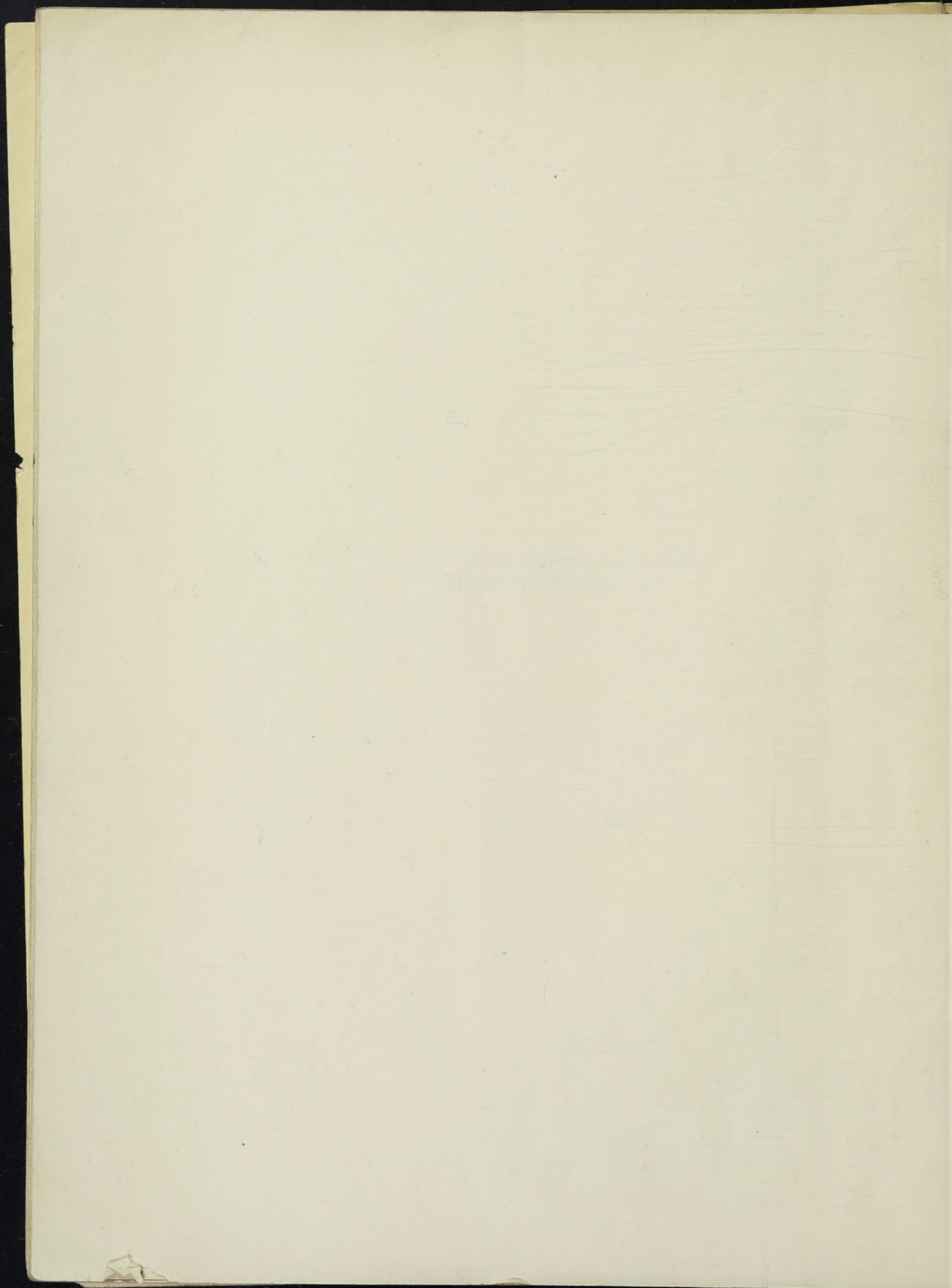
- 127 A Man in 18th Century dress seated on a sofa reading, signed  
*Pastel* 17in. by 23½in.

\*\* Exhibited at Whitechapel, Spring Exhibition, 1906, No. 106.

END OF SALE

London : Printed by KITCHEN & BARRATT LTD.  
Park Royal Road, London, N.W 10.





\*N5247

G53

C37

1937

STERN

## DOMINION GALLERY

1438 SHERBROOKE ST. WEST  
MONTREAL

# SOTHEBY & CO.

34 & 35, NEW BOND STREET, W.1.

*are pleased to perform the following Services*

### FREE OF CHARGE

To advise intending SELLERS regarding the disposal of LITERARY  
and ARTISTIC PROPERTY

To give advice to intending BUYERS at their sales

TO EXAMINE PROPERTY submitted to them at their Rooms with a view to Sale

To execute BIDS at their Sales — To forward Illustrated Monthly  
Lists of Forthcoming Sales

At a charge of 7½ per cent. (for all Lots over £100)

### TO SELL BY AUCTION

PICTURES, SILVER, JEWELLERY, CHINA  
FURNITURE AND WORKS OF ART, ETC.

At a charge of 12½ per cent.

BOOKS, COINS, ANTIQUITIES AND PRINTS

(N.B.—These rates cover all normal Expenses of Sales)

At a charge of 5 per cent. and expenses

TO CONDUCT SALES AT PRIVATE HOUSES

At a charge of 1 per cent. (subject to a small minimum fee)

TO VALUE FOR PROBATE, INSURANCE, AND  
FAMILY DIVISION

*Visits of inspection made at moderate charges*

*Individual catalogues free on application*

THE MOST CAREFUL ATTENTION IS GIVEN TO ALL PROPERTIES  
WHETHER SMALL OR LARGE

All properties are placed ON VIEW FOR SEVERAL DAYS before the Sale  
and displayed to the best advantage

### NOTICES OF SALES

Notices of all sales appear in the following papers :

*Mondays* : " Daily Telegraph ", " Morning Post "

*Tuesdays* : " Times "

### NOTICES OF SPECIAL SALES

Appear in suitable papers from time to time

Telephone :  
MAYFAIR 6682-3-4.  
(three lines)

Telegraphic Address :  
ABINITIO, WESDO, LONDON:

3712186

BAKER, LEIGH & SOTHEBY

THE FIRM COMMENCING WITH SAMUEL BAKER IN

1744

SOTHEBY, WILKINSON & HODGE

1861-1924

SOTHEBY & CO.

1924-1937