

VIEWS  
IN  
THE CANADAS  
NEW BRUNSWICK &  
NOVA SCOTIA



18 plates by BOUCHETTE  
2 maps  
20

Autographed  
by Bouchette







To Lady Sidmouth  
With Genl. Col. Bouchette's  
best respects  
8<sup>th</sup> Jan. 1833

VIEWS

THE CANADAS

NEW BRUNSWICK AND NOVA SCOTIA

DRAWN FROM NATURE

LIEUT. COL. BOUCHETTE

AND THE POINT

ISSUED BY JOSEPH & CO. AND J. P. BOUCHETTE



VIEWS

IN

THE CANADAS,

NEW BRUNSWICK, AND NOVA SCOTIA.

DRAWN FROM NATURE,

BY

LIEUT.-COL. BOUCHETTE,

AND HIS SONS,

MESSRS. JOSEPH; R. S. M.; AND J. F. BOUCHETTE.

VIEWS

IN

THE CANADAS,

NEW BRUNSWICK AND NOVA SCOTIA.

DRAWN FROM NATURE.

LIEUT. COL. BOUCHETTE.

AND THE

MESSRS. JOSEPH, R. & M.; AND J. T. BOUCHETTE.



VIEW FROM THE MOUNTAIN TO WOLFE and MONTCALM.

QUEBEC.

Engraved by G. B. S. for the Proprietors of the "North American Review."





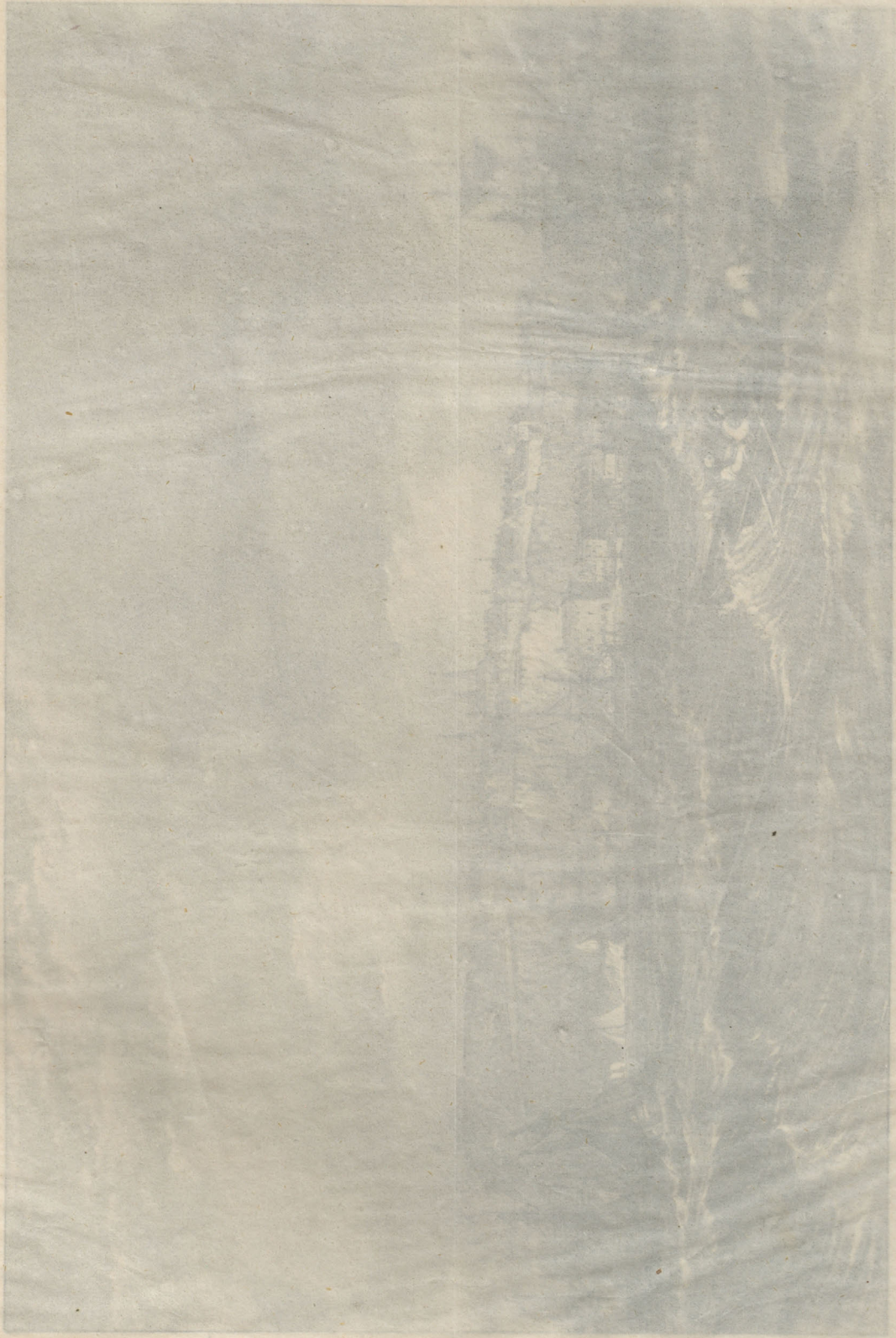
MONUMENT to WOLFE and MONTCALM.  
QUEBEC.

Day & Haghe Lithrs to the King, 17, Gate St Linc In F 48

Sketched by J.P. Bouchette 68° N. 11'

On Stone by L. Haghe





CITY OF QUEBEC

Taken from the harbor







R. S. M. Bouchelet, Del.

CITY of QUEBEC,  
Taken from the Harbour.

Drawn by Hugh Lathrop to the King of Great Britain, 1764.









**REFERENCE.**

- |                                     |                                    |
|-------------------------------------|------------------------------------|
| A Castle of St. Louis.              | 1 Gaudie Ship Yard.                |
| B Parliament Ho.                    | 2 Muns Ship Yard.                  |
| C Court House.                      | 3 Government Yard.                 |
| D English Cathedral.                | 4 Bell's Ship Yard.                |
| E French Cathedral.                 | 5 M <sup>c</sup> Callum's Wharf.   |
| F Seminary.                         | 6 Ezer's Wharf.                    |
| G Ursuline Convent.                 | 7 Taylor's Ship Yard.              |
| H Goal.                             | 8 Sundry Wharfs.                   |
| I Scotch Church.                    | 9 D <sup>o</sup> D <sup>o</sup> .  |
| J Trinity Chapel.                   | 10 D <sup>o</sup> D <sup>o</sup> . |
| K Public Offices.                   | 11 Wharf.                          |
| L Lower Town Church.                | 12 Lampon's Wharf.                 |
| M Engineers Office.                 | 13 Bell's Wharf.                   |
| N Quebec Exchange.                  | 14 Gaudie's Wharf.                 |
| O Intendants Old Pal <sup>s</sup> . | 15 Hunt's Wharf.                   |
| P Episcopal Church.                 | 16 M <sup>c</sup> Callum's Wharf.  |
| Q St. Roch's Church.                | 17 Queen's Wharf.                  |
| R Methodist Chapel.                 | 18 King's Wharf.                   |
| S Monument.                         | 19 Irvine's Wharf.                 |
| T Fire Assur <sup>o</sup> Office.   | 20 Jones' Wharf.                   |
| U St. John's Chapel.                | 21 Cape Diamond Wharf.             |
| V Hotel Dieu Nunnery.               | 22 Heath & Moir's D <sup>o</sup> . |
| W Congregate Church.                | 23 Sundry Wharfs.                  |
| X National School.                  | 24                                 |
| Y Commissariat.                     | 25                                 |
| Z St. Roch's School.                | 26                                 |
|                                     | 27                                 |
|                                     | 28 Fraser's Wharf.                 |
|                                     | 29 Carman's Wharf.                 |

Reduced by F. Cattlin.

Engraved by J & C Walker.





*View of the Valley of the Nile from the Temple*







J. B. Walker sculp.

Drawn by C. A. Froehner.

*Harrover's Distillery & Mill on the River Trois, Louisiana.*





*Large Fountain at the Cathedral in the city of the Holy*





1827 Walker sculp.

Drawn by G. B. Prussel del.

Long's Farm on Lake Temiscouata, at the extremity of the Prings.





*St. Paul, Minn. - View from the Tower of the Pines*







*Take our View in the River Richfield*

*J. & C. Fisher sculp.*

*Drawn by G. H. Bouchette.*





*Faint handwritten text, possibly a signature or a note, located to the right of the illustration.*





J. B. Miller sculp.

Drawn by Col. Brantford

Fort Schumaker





On the right of the page  
**KILLBORN'S MILL, STANFORD, LEICESTERSHIRE, ENGLAND.**  
South of the mill is a small lake, and  
the mill is built on the bank of the river.







*New Prov. Line.*

*Old Prov. Line.*

*New Prov. Line.*

*Old Prov. Line.*

Sketched by Col. Bouchette.

**KILBORN'S MILLS, STANSTEAD, LE CANADA & THE UNITED STATES SETTLEMENTS, VERMONT.**

South of the Province Line. — Lat 46 N.

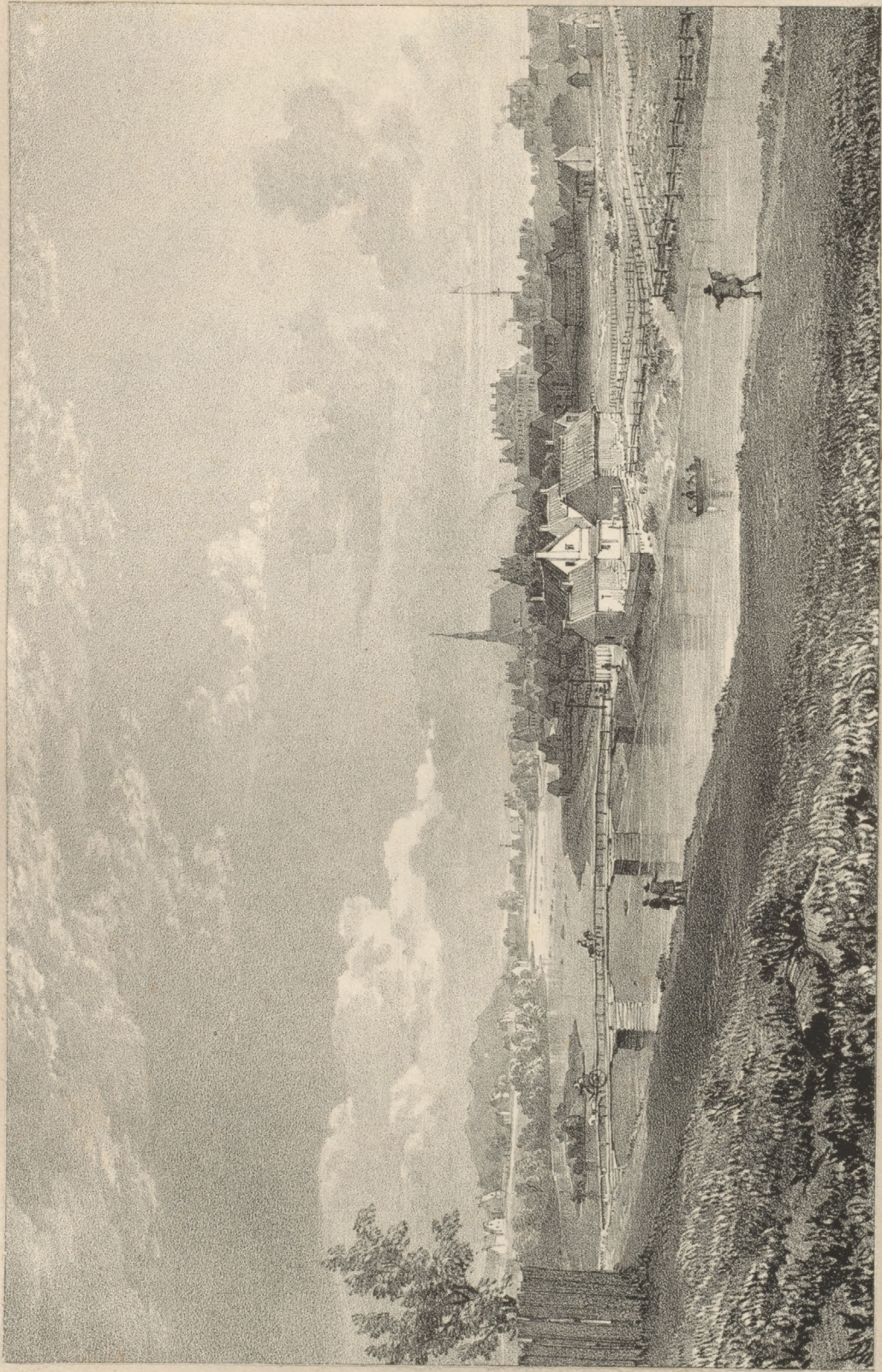
*W. Day Litho to the King, 17, Gate St. London, E. d.*

On Stone by C. Haghe













TRADING POST ON THE RIVER AUX RATS

THE FORT OF ST. MARY

FALLS OF THE GRAND MERU, ON THE S. MACKINAC

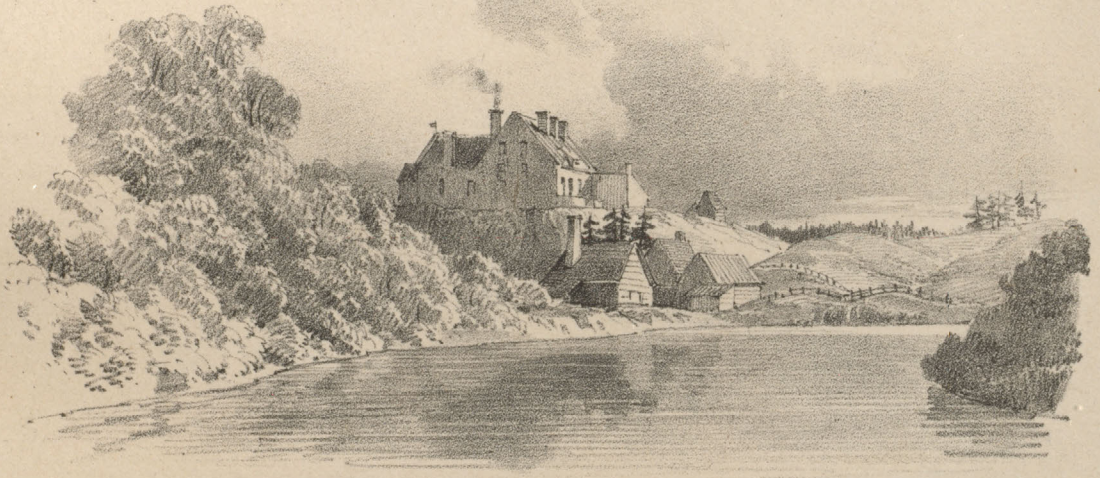
W. & A. G. LEITCH, N.Y.







TRADING POST ON THE RIVER AUX RATS.



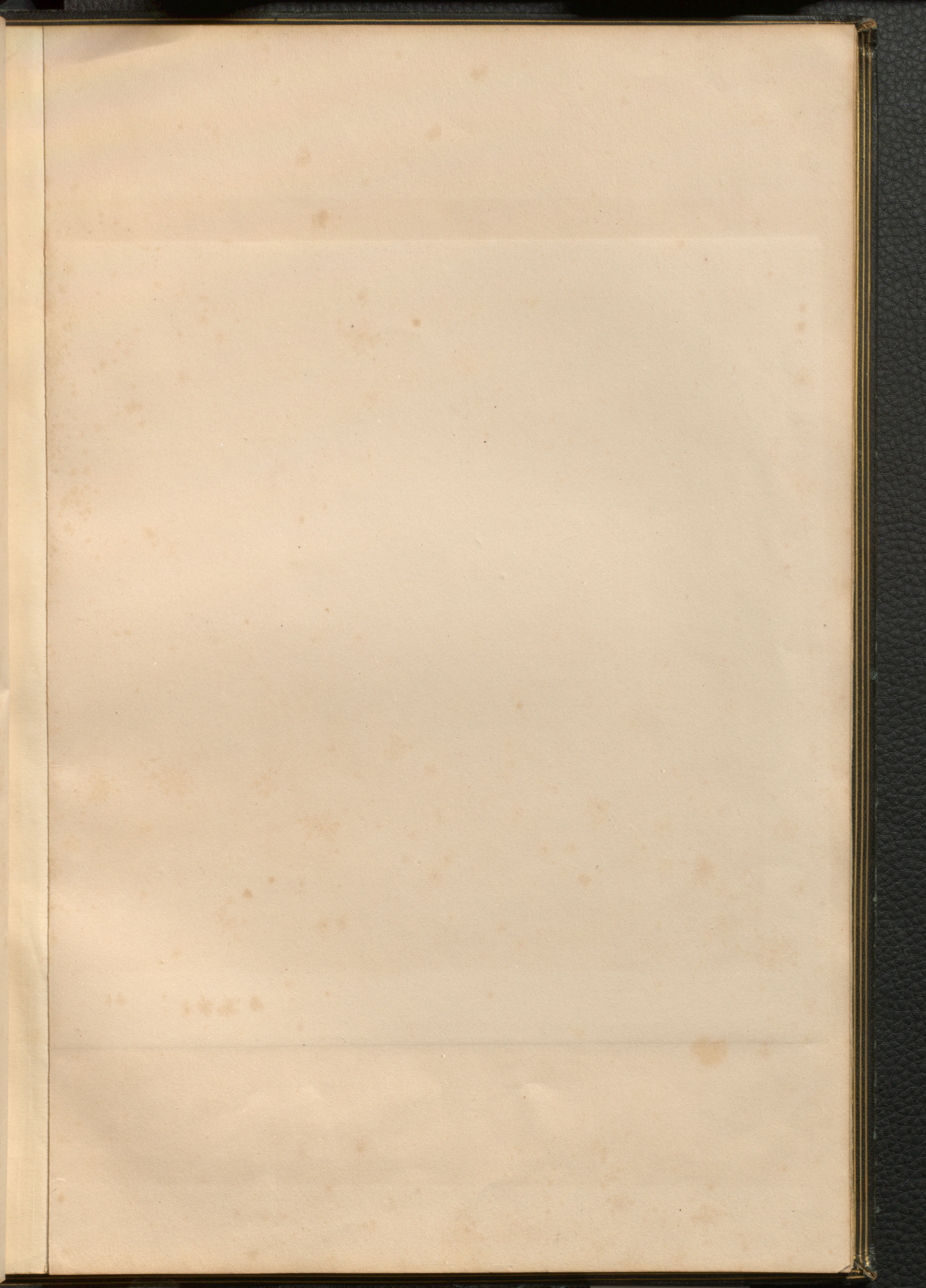
THE FORGES, RIVER ST MAURICE.



FALLS OF THE GRAND MERE, ON THE ST MAURICE.

*See Bouchette's Jour. Des. Voy. Can. del.*







On Stone by L. Haghe.

*By L. Haghe. Sent to the King 17, Gale S<sup>r</sup>*

VIEW OF THE CITY OF  
TAKEN FROM THE MOUNTAIN



Jos<sup>ph</sup>. Bouchette Jun<sup>r</sup> D.S.G. del<sup>t</sup>

THE CITY OF MONTREAL.

TAKEN FROM THE MOUNTAIN.

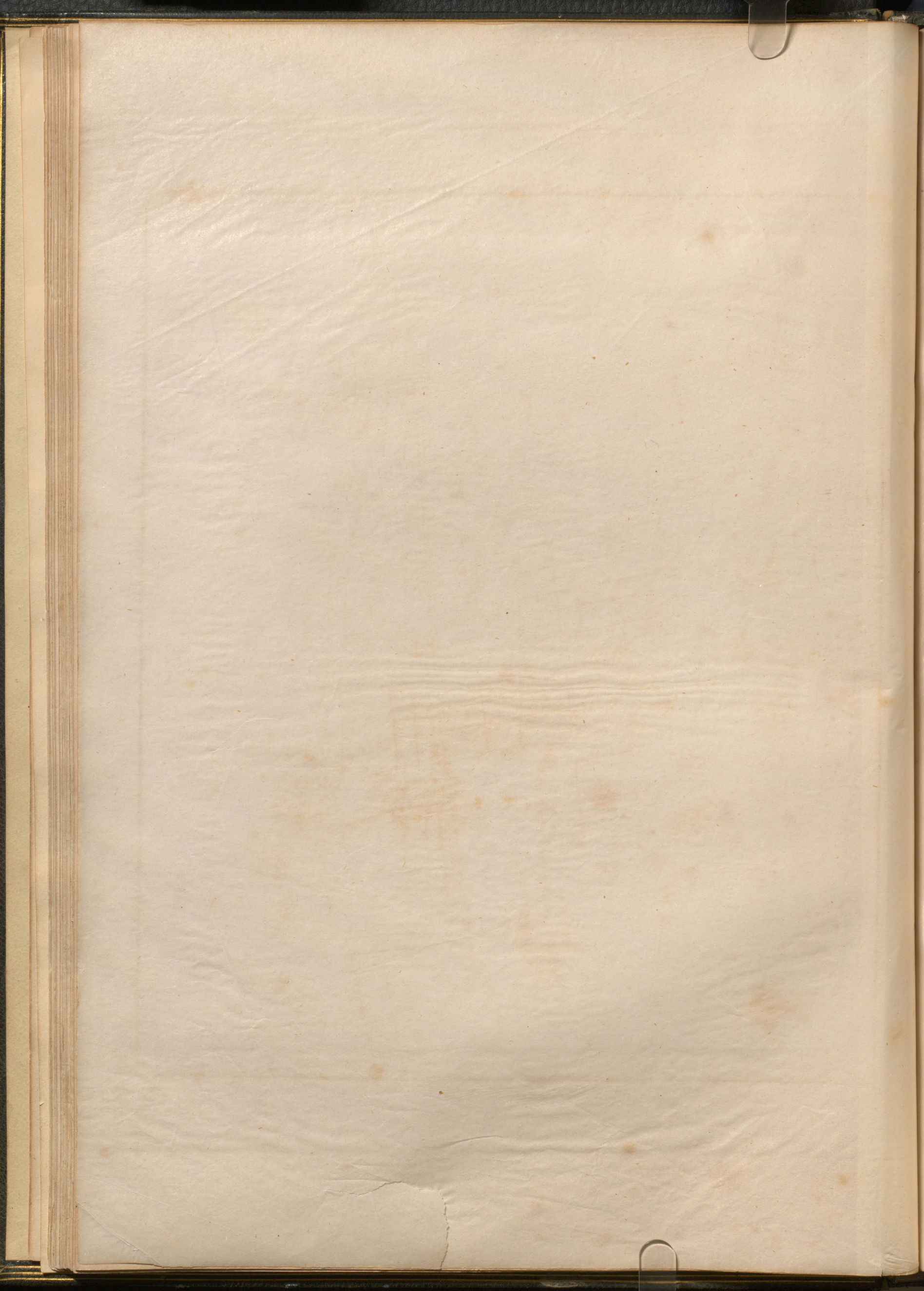


CITY OF MONTREAL 1850.



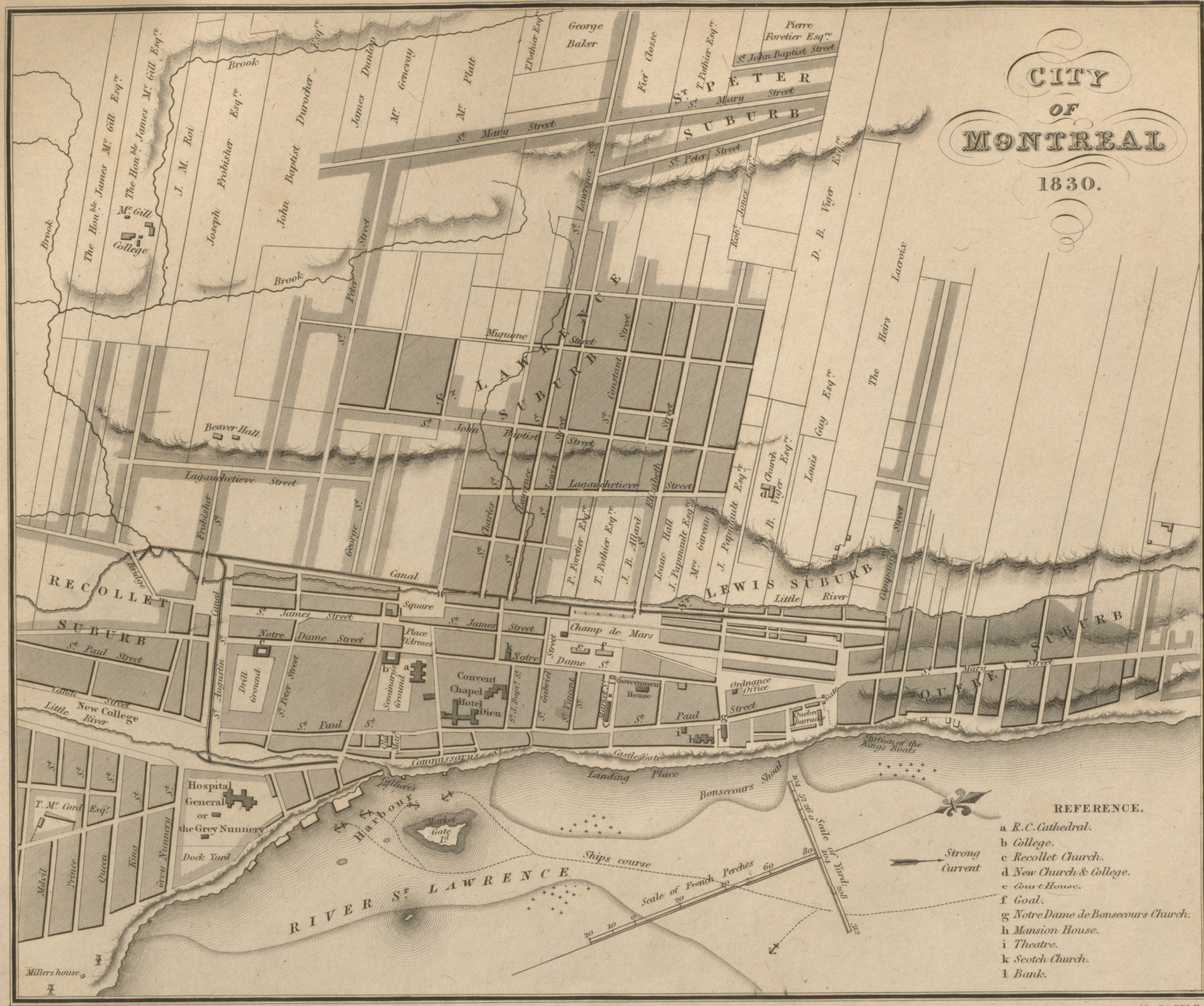
- REVENUE.
- a. Catholic Church
  - b. College
  - c. Protestant Church
  - d. Protestant School
  - e. Protestant Chapel
  - f. Protestant Hall
  - g. Protestant School
  - h. Protestant School
  - i. Protestant School
  - k. Protestant School
  - l. Protestant School

Printed by J. G. Gauthier.





CITY  
OF  
MONTREAL  
1830.



REFERENCE.

- a R.C. Cathedral.
- b College.
- c Recollet Church.
- d New Church & College.
- e Court House.
- f Goal.
- g Notre Dame de Bonsecours Church.
- h Mansion House.
- i Theatre.
- k Scotch Church.
- l Bank.

Reduced by F. Cattlin.

Engraved by J. & C. Walker.



UPPER CANADA.

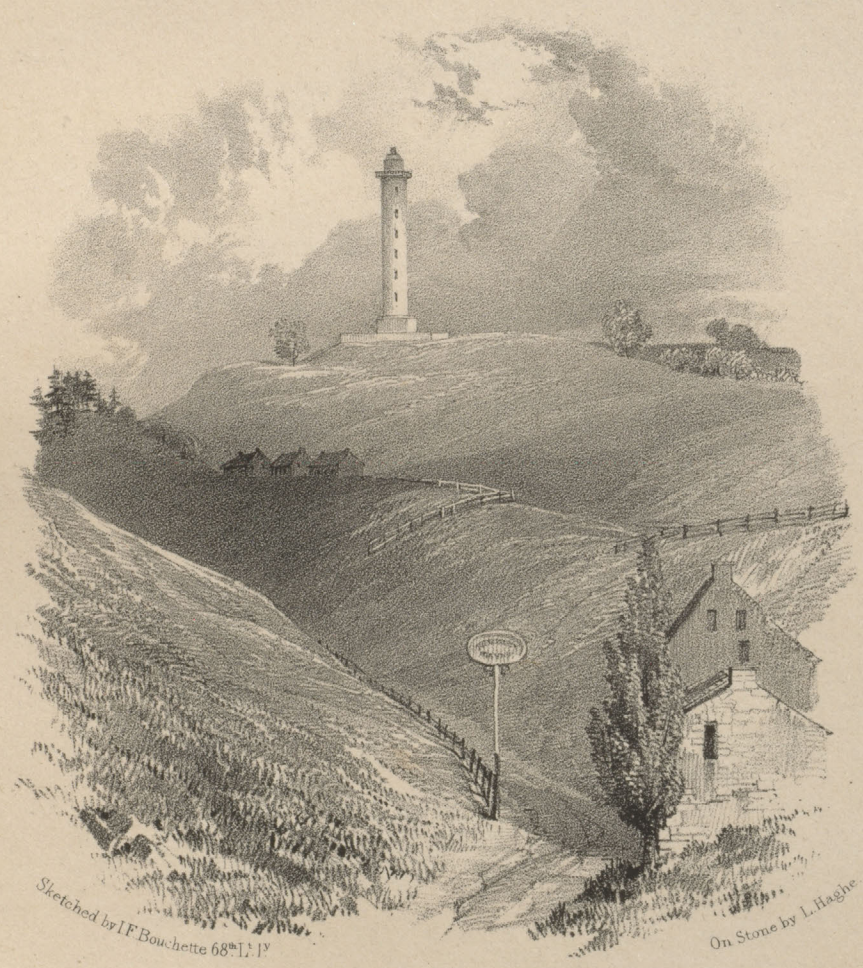


BROCK'S MONUMENT.  
CUMBERLAND HEIGHTS.

Printed by J. H. ...



UPPER CANADA.



Sketched by J.F. Bouchette 68<sup>th</sup> L.I.

On Stone by L. Haghe

BROCK'S MONUMENT,  
QUEENSTON HEIGHTS.

Dax & Haghe Litho<sup>rs</sup> to their Majesties





OTTAWA, ONTARIO  
1877







R. S. M. Bouchette Esq<sup>r</sup> del<sup>t</sup>

UNION BRIDGE: BY TOWN.  
OTTAWA RIVER.

on Stone by L. Hague.

W. Day lith. 17. Gate St.





Dr. Shepard M. L. Taylor

INSCRIPTION on the NEW MONUMENT erected at the SITE of the BATTLE of the RED BANK  
 N. Place COL. JOS. BOUCHETTE HUMPHREYS 1775-1857  
 S. Place JOHN JOHNSON U.S. SURVEYOR 1776-1857  
 and West Place are the names inscribed respectively with the names of the  
 soldiers and Surveyors who were killed in the Battle of the Red Bank  
 July 18th 1817 (John Johnson) the article printed on opposite page





On Stone by L. Haghe.

Placed by Col<sup>d</sup> Bouchette 31 July 1817.

INSCRIPTION on the NEW MONUMENT erected at the SOURCE of the S<sup>t</sup> CROIX on the 31<sup>st</sup> JULY, 1817.

N. Face. COL<sup>d</sup> JOS BOUCHETTE H<sup>B</sup>M. SUR<sup>t</sup> GEN<sup>t</sup> Var 13° 51' 2" West. E Face. New Brunswick July 31 1817. printed in same manner.  
 S. Face. JOHN JOHNSON U.S. SURVEYOR & S<sup>G</sup> V<sup>T</sup>. W Face. United States 31 July 1817. At the bottom of the Monument on the East  
 and West Faces are two Stones inclined marked respectively with the initials of the Surveyors, the date & also the initials of the  
 different Territories, viz on the West side N B (New Brunswick) 31 July 1817. — J. B. (Joseph Bouchette), on the East side U. S. (United States)  
 31 July 1817. J. J. (John Johnson) the whole printed in capital letters. — A. an Iron Hoop on a Beech Tree old Monument fixed in 1797.











Day & Haghe Litho. to the King / Case St. Line. Inn. P. 4.

On Stone by L. Haghe.

VIEW OF HALIFAX FROM DARTMOUTH COVE.





NEW GOVERNMENT BUILDING

Trenton, N. J.

Architect: J. C. Smith





Engraved by L. Hays

NEW GOVERNMENT HOUSE,  
Fredericksburg, N. B.

Drawn by A. L. Ledy

Drawn by A. L. Ledy











Day & Hague, Lith. to the King, 17 Gate St. Line Inn, F.

ON THE KENIBECKSIS near St JOHN.









Printed & Published by D. V. & H. G. Ingle, 17, Gate St. Lane, Inn. P. 25.

**BARRACKS, AND MARKET HOUSE, FREDERICTON, New Brunswick.**

By a Lady





*Faint, illegible handwritten text, possibly a signature or date, located to the right of the central illustration.*







J. & C. Hazler-Scott

Drawn by G. Bouchette

*The Great Falls on the River St. John, New Brunswick.*



